

# HEAVY-DUTY LADDERS FOR ALL YOUR JOBSITE NEEDS

**BuildMan**  
Grade



**METALTECH**

**BUILT TOUGH FOR  
SAFETY**

# BUILDMAN<sup>®</sup> ALUMINUM EXTENSION LADDER

## FEATURES



**DURABLE NON-MARKING END CAP**



**ANTI-SLIP TEXTURIZED RUNGS**



**SAFETY HOOK MADE OF ALUMINUM FOR HEAVY USE**



**SELF-LEVELING FEET WITH ANCHORING SPIKES AND RUBBER BASE**



TYPE  
**IA**  
300 LB



**OPTIONAL  
STAND-OFF ARMS  
(E-ACCSOAP)**



## ALUMINUM EXTENSION LADDER

	DUTY RATING/ LOAD CAPACITY*	SIZE	LENGTH OF SECTIONS	MAX. EXTENDED LENGTH	MAXIMUM REACH**	HIGHEST STANDING LEVEL	MODEL
TYPE <b>IA</b> 300 LB		16 FT	8 FT	13 FT 4 IN.	16 FT 2 IN.	9 FT 5 IN.	E-ELAB16T1A
		20 FT	10 FT	17 FT 4 IN.	20 FT 1 IN.	13 FT 4 IN.	E-ELAB20T1A
		24 FT	12 FT	21 FT 4 IN.	23 FT 11 IN.	17 FT 2 IN.	E-ELAB24T1A
		28 FT	14 FT	25 FT 4 IN.	27 FT 10 IN.	21 FT 1 IN.	E-ELAB28T1A
		32 FT	16 FT	29 FT 4 IN.	31 FT 8 IN.	24 FT 11 IN.	E-ELAB32T1A
		36 FT	18 FT	32 FT 4 IN.	34 FT 7 IN.	27 FT 10 IN.	E-ELAB36T1A
		40 FT	20 FT	35 FT 4 IN.	37 FT 5 IN.	30 FT 8 IN.	E-ELAB40T1A

\*Load capacity: Includes weight of user plus materials \*\*Max. reach: Calculated with a 5'-9" (1.75 m) person with a vertical 12" (30 cm) reach



# BUILDMAN® FIBERGLASS EXTENSION LADDER

## FEATURES



**DURABLE NON-MARKING END CAP**



**ANTI-SLIP TEXTURIZED RUNGS**



**SAFETY HOOK MADE OF ALUMINUM FOR HEAVY USE**



**SELF-LEVELING FEET WITH ANCHORING SPIKES AND RUBBER BASE**



TYPE  
**IA**  
300 LB

**OPTIONAL  
STAND-OFF ARMS**  
(E-ACCSOAP)



## FIBERGLASS EXTENSION LADDER

DUTY RATING/ LOAD CAPACITY*	SIZE	LENGTH OF SECTIONS	MAX. EXTENDED LENGTH	MAXIMUM REACH**	HIGHEST STANDING LEVEL	MODEL
TYPE <b>IA</b> 300 LB	16 FT	8 FT	13 FT 4 IN.	16 FT 2 IN.	9 FT 5 IN.	E-ELFB16T1A
	20 FT	10 FT	17 FT 4 IN.	20 FT 1 IN.	13 FT 4 IN.	E-ELFB20T1A
	24 FT	12 FT	21 FT 4 IN.	23 FT 11 IN.	17 FT 2 IN.	E-ELFB24T1A
	28 FT	14 FT	25 FT 4 IN.	27 FT 10 IN.	21 FT 1 IN.	E-ELFB28T1A
	32 FT	16 FT	29 FT 4 IN.	31 FT 8 IN.	24 FT 11 IN.	E-ELFB32T1A
	36 FT	18 FT	32 FT 4 IN.	34 FT 7 IN.	27 FT 10 IN.	E-ELFB36T1A
	40 FT	20 FT	35 FT 4 IN.	37 FT 5 IN.	30 FT 8 IN.	E-ELFB40T1A

\*Load capacity: Includes weight of user plus materials \*\*Max. reach: Calculated with a 5'-9" (1.75 m) person with a vertical 12" (30 cm) reach



# BUILDMAN® FIBERGLASS STEP LADDER

## FEATURES



MULTI-FUNCTIONAL TOP CAP WITH VERSATILE TOOL SLOTS



DOUBLE-RIVETED SLIP RESISTANT STEPS



STRONG INTERNAL SPREADER



HEAVY DUTY SLIP RESISTANT FEET



## FIBERGLASS STEP LADDER

DUTY RATING/ LOAD CAPACITY*	SIZE	MAXIMUM REACH**	HIGHEST STANDING LEVEL	STEP DEPTH	MODEL
TYPE <b>IA</b> 300 LB	4 FT	8 FT 8 IN.	1 FT 11 IN.	3 IN.	E-SLFB4T1A
	6 FT	10 FT 6 IN.	3 FT 9 IN.	3 IN.	E-SLFB6T1A
	8 FT	12 FT 5 IN.	5 FT 8 IN.	3 IN.	E-SLFB8T1A
	10 FT	14 FT 4 IN.	7 FT 7 IN.	3 IN.	E-SLFB10T1A
	12 FT	16 FT 3 IN.	9 FT 6 IN.	3 IN.	E-SLFB12T1A
TYPE <b>IAA</b> 375 LB	4 FT	8 FT 8 IN.	1 FT 11 IN.	3 IN.	E-SLFB4T1AA
	6 FT	10 FT 6 IN.	3 FT 9 IN.	3 IN.	E-SLFB6T1AA
	8 FT	12 FT 5 IN.	5 FT 8 IN.	3 IN.	E-SLFB8T1AA
	10 FT	14 FT 4 IN.	7 FT 7 IN.	3 IN.	E-SLFB10T1AA
	12 FT	16 FT 3 IN.	9 FT 6 IN.	3 IN.	E-SLFB12T1AA

\*Load capacity: Includes weight of user plus materials \*\*Max. reach: Calculated with a 5'-9" (1.75 m) person with a vertical 12" (30 cm) reach



# BUILDMAN<sup>®</sup> SAFESPACE<sup>™</sup> PLATFORM FIBERGLASS STEP LADDER



TYPE  
**IA**  
300 LB

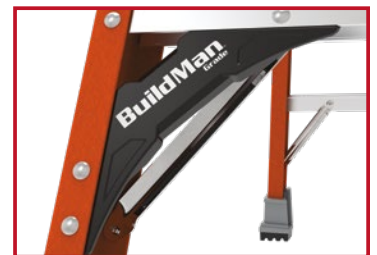
## FEATURES



**HIP-LEVEL GUARDRAIL WITH  
VERSATILE TOOL SLOTS**



**SPACIOUS 16.5 X 16.5 IN.  
ALUMINUM PLATFORM**



**POLYMER REINFORCEMENT BARS  
REDUCE STRESS ON THE STEP  
LADDER FRAME**



**HEAVY DUTY SLIP RESISTANT FEET**

## SAFESPACE<sup>™</sup> PLATFORM FIBERGLASS STEP LADDER

DUTY RATING/ LOAD CAPACITY*	NOMINAL SIZE	MAXIMUM REACH**	HIGHEST STANDING LEVEL	PLATFORM DIMENSIONS	STEP DEPTH	MODEL
TYPE <b>IA</b> 300 LB	2 FT	8 FT 8 IN.	1 FT 11 IN.	16.5 X 16.5 IN.	3 IN.	E-PSFB2T1A
	3 FT	9 FT 8 IN.	2 FT 11 IN.	16.5 X 16.5 IN.	3 IN.	E-PSFB3T1A
	4 FT	10 FT 7 IN.	3 FT 10 IN.	16.5 X 16.5 IN.	3 IN.	E-PSFB4T1A
	6 FT	12 FT 5 IN.	5 FT 8 IN.	16.5 X 16.5 IN.	3 IN.	E-PSFB6T1A
	8 FT	14 FT 4 IN.	7 FT 7 IN.	16.5 X 16.5 IN.	3 IN.	E-PSFB8T1A
	10 FT	16 FT 2 IN.	9 FT 5 IN.	16.5 X 16.5 IN.	3 IN.	E-PSFB10T1A***
	12 FT	18 FT 1 IN.	11 FT 4 IN.	16.5 X 16.5 IN.	3 IN.	E-PSFB12T1A***

\*Load capacity: Includes weight of user plus materials \*\*Max. reach: Calculated with a 5'-9" (1.75 m) person with a vertical 12" (30 cm) reach

\*\*\*Available by special order; shipping delays may apply

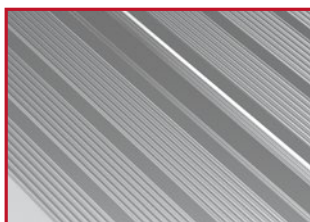


# BUILDMAN<sup>®</sup> STEP-UP WORKBENCH, SAWHORSE STAND

## FEATURES



30.25 X 10 IN. TOP



ANTI-SLIP STEPS AND TOP



RUBBER PADS TO ENSURE  
STABILITY AND PREVENT  
SLIPPAGE

## FIBERGLASS STEP-UP WORKBENCH, SAWHORSE STAND



TYPE  
**IA**  
300 LB

DUTY RATING/ LOAD CAPACITY*	SIZE	DECK DIMENSIONS	OPEN DIMENSIONS	STEP DEPTH	MODEL
TYPE <b>IA</b> 300 LB	2 FT	10 X 30.25 IN.	33.5 X 25.75 X 25.25 IN.	3 IN.	E-WSFB24T1A
	3 FT	10 X 30.25 IN.	34.75 X 33.25 X 36.5 IN.	3 IN.	E-WSFB36T1A
	4 FT	10 X 30.25 IN.	36.25 X 40.5 X 48 IN.	3 IN.	E-WSFB48T1A

\*Load capacity: Includes weight of user plus materials

## ALUMINUM WORK STAND SAWHORSE



TYPE  
**IA**  
300 LB

## FEATURES



23.75 X 12.25 IN. TOP



ANTI-SLIP STEPS AND TOP



LIGHTWEIGHT

DUTY RATING/ LOAD CAPACITY*	SIZE	DECK DIMENSIONS	OPEN DIMENSIONS	MODEL
TYPE <b>IA</b> 300 LB	2 FT	23.75 X 12.25 IN.	26.25 X 28.25 X 23.75 IN.	E-PWS7000AL
	3 FT	23.75 X 12.25 IN.	27.25 X 36.25 X 35 IN.	E-PWS7100AL
	4 FT	23.75 X 12.25 IN.	28.5 X 45 X 46.5 IN.	E-PWS7200AL
	5 FT	23.75 X 12.25 IN.	29.5 X 53.5 X 58 IN.	E-PWS7300AL

\*Load capacity: Includes weight of user plus materials

# ALUMINUM TELESCOPING WORK PLANK



## FEATURES



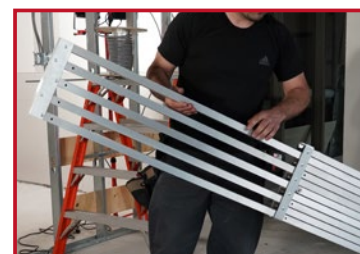
**PLANK EASILY ADJUSTS TO MATCH THE NEEDS OF YOUR PROJECT**



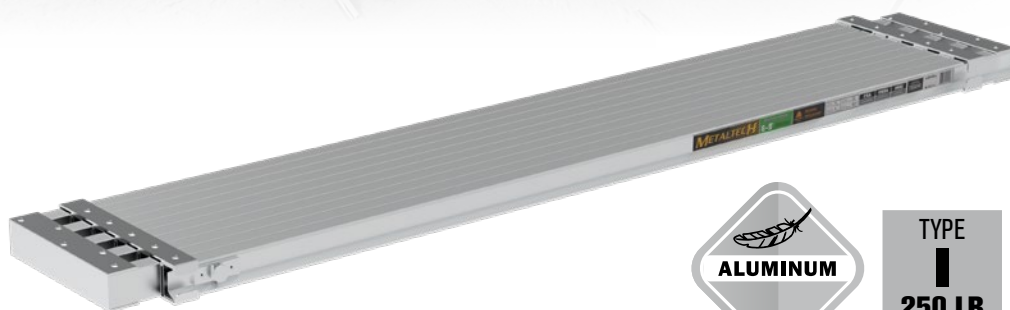
**ANTI-SLIP SURFACE**



**SAFETY LOCK**



**LIGHTWEIGHT YET STRONG ALUMINUM CONSTRUCTION**



**TYPE I  
250 LB**

## ALUMINUM TELESCOPING WORK PLANK

DUTY RATING/ LOAD CAPACITY*	SIZE	EXTEND	MODEL
TYPE I 250 LB	9 FT	6 UP TO 9 FT ADJUSTABLE LENGTH BY 12 IN. INCREMENTS	M-PEP7000AL
	13 FT	8 UP TO 13 FT ADJUSTABLE LENGTH BY 12 IN. INCREMENTS	M-PEP7100AL
	17 FT	10 UP TO 17 FT ADJUSTABLE LENGTH BY 12 IN. INCREMENTS	M-PEP7200AL

\*Load capacity: Includes weight of user plus materials



# BUILDMAN<sup>®</sup> DRYWALL BENCH

## FEATURES



18 TO 30 IN. ADJUSTABLE HEIGHTS



AUTO-LOCKING SYSTEM WITH  
LOCK INDICATOR DEVICE



EXTRA-WIDE STEP-UP



## EXTENDABLE BENCH FOR DRYWALL

LOAD CAPACITY*	WORKING HEIGHT	MAXIMUM REACH**	WORK SURFACE	MODEL
500 LB	18 UP TO 30 IN. 2 IN. INCREMENT ADJUSTABLE HEIGHTS	9 FT 3 IN.	48 X 9.5 IN.	I-BMDWB18

\*Load capacity: Includes weight of user plus materials \*\*Max. reach: Calculated with a 5'-9" (1.75 m) person with a vertical 12" (30 cm) reach

**BUILDMAN<sup>®</sup> GRADE PRODUCTS ARE BUILT TO ENDURE THE MOST RUGGED  
JOBSITE ENVIRONMENTS THAT THE PROS DEAL WITH EVERY DAY**



CUSTOMER SERVICE  
T : 1 800 567-0605 (TOLL FREE NUMBER)  
@ : CS@METALTECH.CO  
WWW.METALTECH.CO



**GOING  
PAPERLESS?**



Scan for a quick  
access to a digital  
version (PDF)

