



INSTRUCTIONS

SAFETY GUARDRAIL SYSTEMS WARNING LINE ACCESS HATCH

TABLE OF CONTENT

SAFETY GUARDRAIL SYSTEMS	2
WARNING LINE	28
ACCESS HATCH	36
CONTACT & WARRANTY	45



Picture may differ from actual product.



**READ THESE INSTRUCTIONS CAREFULLY BEFORE USING THIS PRODUCT.
KEEP THIS MANUAL HANDY FOR FUTURE REFERENCE.**

**THIS EQUIPMENT MEETS ANSI,
NBC, CNESST, CSTC, RSST,
OBC, OSHA AND WORKSAFE BC
STANDARDS.**

OPERATIONAL SAFETY



READ BEFORE BEGINNING ASSEMBLY.

**FAILURE TO UNDERSTAND AND FOLLOW ALL SAFETY RULES AND ASSEMBLY INSTRUCTIONS
COULD RESULT IN SERIOUS INJURY OR DEATH.**



METAL CONDUCTS ELECTRICITY:

Do not use this equipment where contact may be made with power lines or other live electrical circuits.

INSTRUCTIONS AND SAFETY

- Do not use this equipment if you are in poor health, taking medications, drugs, or have been consuming alcohol, all of which may impair your ability to work safely on this product.
- Comply with local or national legislation that applies for the use of this type of equipment.
- Examine thoroughly to ensure that the guardrails are properly set up.
- Always check that the surface under the foot clamps and/or the guardrail bases are free of debris. Good adhesion is necessary in order to avoid movements or slipping.
- Never use guardrails for purposes they were not intended for.
- Guardrails are not designed and should not be used as a fall protection anchor for workers.
- Inspect before use. Do not use this equipment if it is damaged or missing parts.
- Always inspect equipment before use to make sure it is working properly and that it is suitable for the needs.
- Always wear the mandatory protective equipment when installing guardrails.
- Report and protect access to the site if the installation of the guardrails is not complete and safe.
- It is imperative to use only the manufacturer suggested parts to assemble the guardrails.
- Never use guardrails in poor safety conditions, such as extreme weather conditions.

EQUIPMENT INSPECTION

- The equipment you plan to use should be inspected to make sure it is in good condition and suitable for the job.
Check the following:
 - SILLS: installed in accordance with the assembly guide, respecting the maximum distances and the number of bases.
 - GUARDRAILS: straight, without bumps, deformations or folds and without excessive rust.
 - CLAMPS: must not contain cracks and the fastening screws must be tightened to the specified torque.
 - OTHER COMPONENTS: inspect any other component of the structure. Any damaged part should be labeled and marked as improper for use.

STANDARDS COMPLY*

- The guardrail must withstand a concentrated horizontal load of 1.0 kN to the outside or inside as well as at any point on the guardrail.
- The guardrail must withstand a vertical load of 1.5 kN/m applied to the top rail.
- The configurations presented in this guide have been designed to withstand the loads for installation on an elastomeric membrane. Modifications to the configurations may be necessary depending on the type of roofing membrane used.

*NBC 2015 - National building code of Canada 2015 - 4.1.5.14

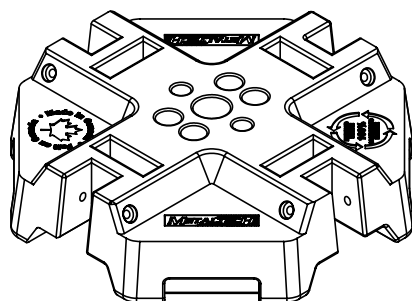
STACKABLE SYSTEM

- The maximum distance between guardrail posts in a “stackable” type installation is 120 in. (304 cm). This distance can be reduced, but not increased.
- 60 in. (152 cm) returns are mandatory at both ends of an installation, but cannot be considered as a guardrail. These are needed to consolidate the installation.
- If installed on a parapet-free roof, 60 in. (152 cm) returns are required every 40 ft (12 m) and must be connected to the guardrail.
- When installing on a parapet-free roof, guardrails must be installed at a minimum of 12 in. (30 cm) from the edge of the roof.
- The top of the guardrail tubes must respectively be installed in the hook clamps from the ground at 21-¼ in. (54 cm) for the middle rail and 42-¼ in. (107 cm) for the top rail. If local regulations require another installation of top and middle rails, you must comply with local regulations.

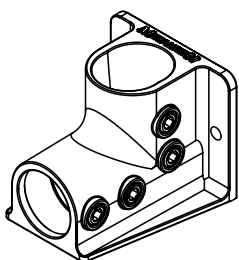
STANDARD SYSTEM

- The maximum distance between guardrail posts made up of one (1) or two (2) bases is 78 in. (198 cm).
- The maximum distance between guardrail posts made up of two (2) or three (3) bases is 39 in. (99 cm).
- The maximum distances described above can be reduced, but not increased.
- All guardrail posts must be fully inserted to the bottom of the foot clamp.
- Elbow end-extensions must not exceed more than 20 in. (50 cm) the previous guardrail post.
- The joints between two (2) guardrail tubes must not overlap between the upper and middle rail. The joints must be offset on each side of a guardrail post.
- The top of the guardrail tubes must respectively be installed in the hook clamps from the ground at 21-¼ in. (54 cm) for the middle rail and 42-¼ in. (107 cm) for the top rail. If local regulations require another installation of top and middle rails, you must comply with local regulations.
- Always respect the position of the bases in relation to the guardrail posts during a “standard” type installation.
- The first rubber base must be installed using a tube clamp at the end of the base tube, the base must be properly aligned with the end of the tube, at the opposite of the guardrail post, the other rubber bases are positioned on the tube following the first base towards the guardrail post as detailed in the assembly guide.
- The installation of a “standard” type system must be at least 10 ft (3 m) long.
- When installing in a corner, a guardrail post should be installed within 12 in. (30 cm) of the corner.
- The shortest possible “standard” corner installation is at least 102 x 51 in. (260 X 130 cm).

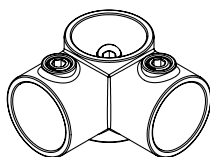
PARTS



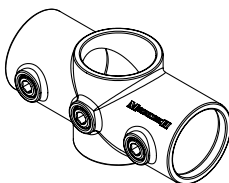
M-MTB
RUBBER BASE



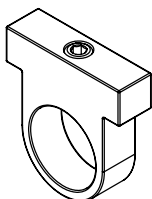
M-MTCF
FOOT CLAMP



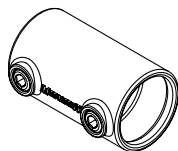
M-MTC4E
4-WAY FLANGE



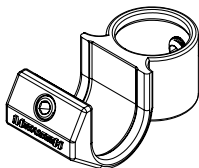
M-MTC4L
4-WAY LINE CLAMP



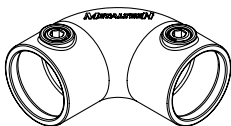
M-MTCC
TUBE CLAMP



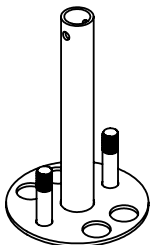
M-MTCL
JOINT



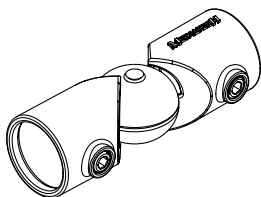
M-MTCH
HOOK CLAMP



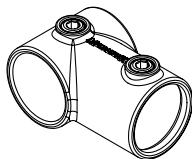
M-MTCE
ELBOW



M-MTS02
BASE SUPPORT
(STACKABLE SYSTEM)



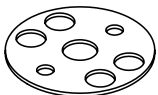
M-MTCP
PIVOT CLAMP



M-MTCT
T-CLAMP



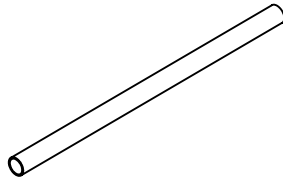
M-MTCW
WALL JOINT



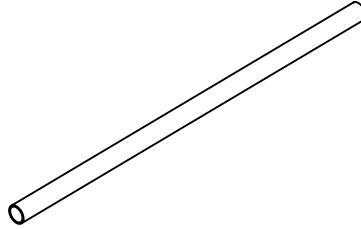
M-MTS03
BASE PLATE
(STACKABLE SYSTEM)



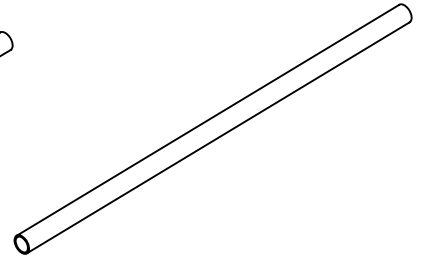
M-MTA18
18 in. END TUBE



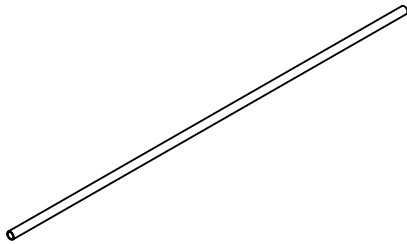
M-MTA45
45 in. TUBE FOR 1 BASE
(STANDARD SYSTEM)



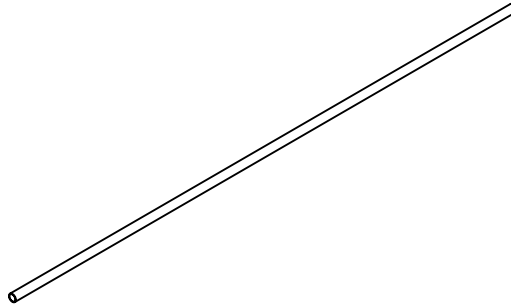
M-MTA60
60 in. TUBE FOR 2 BASES
(STANDARD SYSTEM)



M-MTA75
75 in. TUBE FOR 3
BASES
(STANDARD SYSTEM)



M-MTA120
120 in. GUARDRAIL



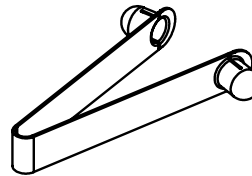
M-MTA240
240 in. GUARDRAIL



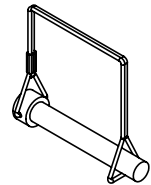
M-MTS04
GUARDRAIL POST
(STANDARD SYSTEM)



M-MTS01
GUARDRAIL POST
(STACKABLE SYSTEM)



M-MLS
SPRING-LOCK



I-CAS5PIN
LOCKING-PIN



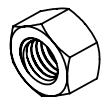
VB-BSSC3/8-BSPX1/2Z
1/2 in. CLAMPING SCREW



VB-BSSC3/8-BSPX7/8Z
7/8 in. CLAMPING SCREW



AL-A0050
END CAP



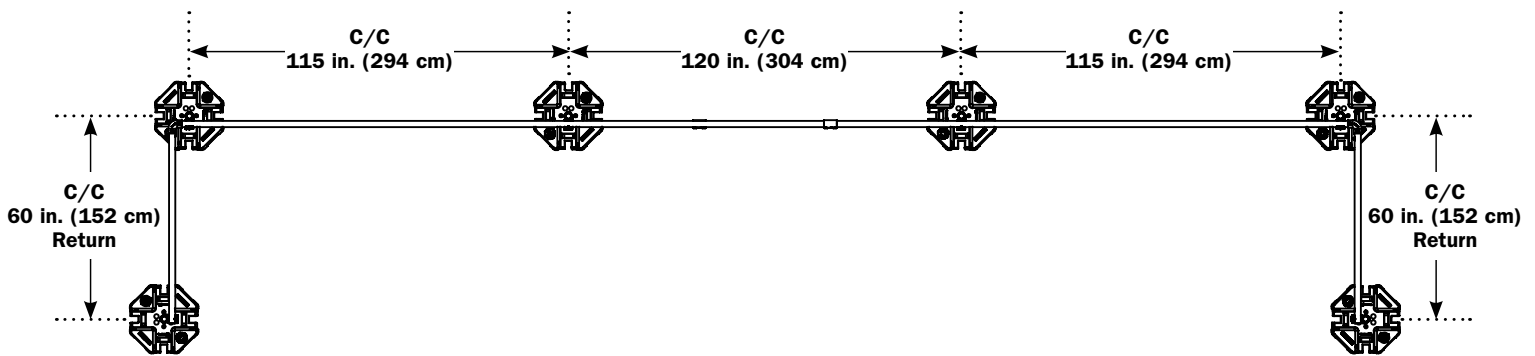
VB-NM20GV
20 mm NUT



STACKABLE SYSTEM

The stackable system is based on the principle that two rubber bases are stacked one on top of the other and do not require any base tube for its installation. Each end of the structure is reinforced by the 60 in. (152 cm) return installations as well as every 40 ft (12 m) along the guardrail line to strengthen its structure if the roof is parapet-free. Refer to the distance diagram between the guardrail posts below for a “stackable” type installation.

Note: refer to the safety instructions section on page 2 of this document in order to comply with the conformity of a “standard” type installation.

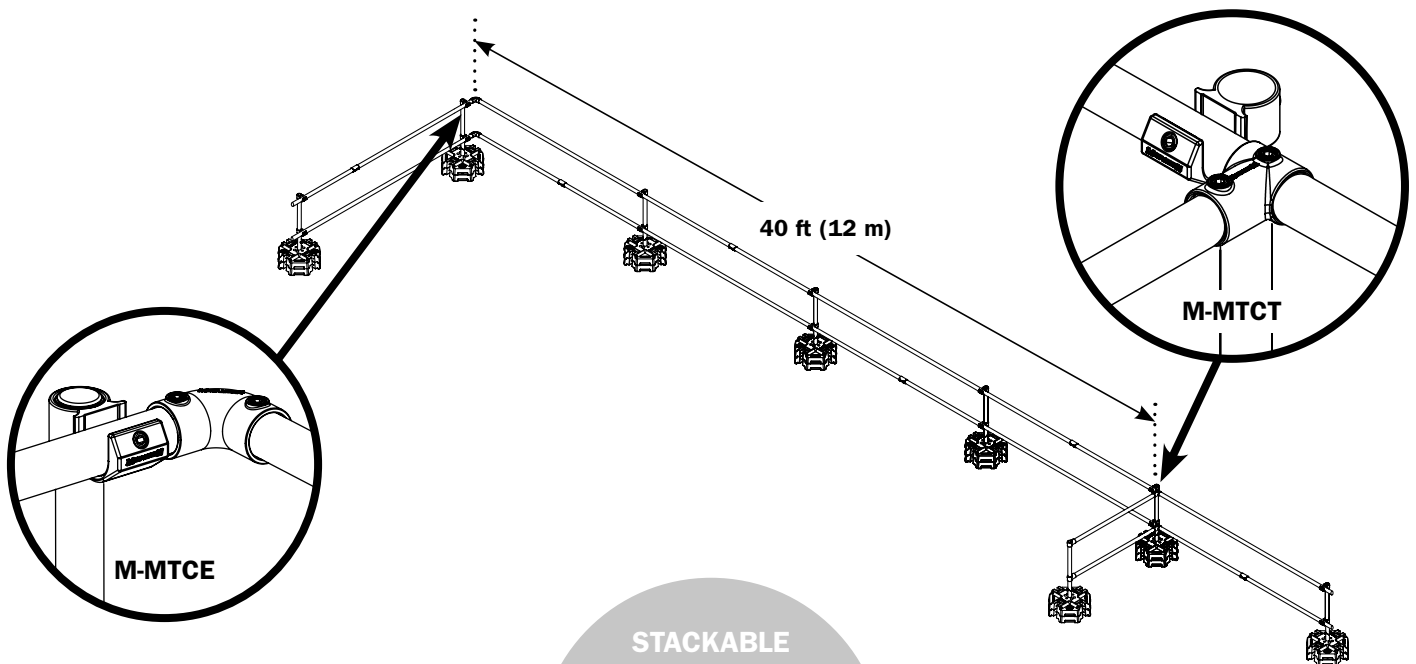


STACKABLE CONFIGURATION

1. STACKABLE CONFIGURATION - L-SHAPED GUARDRAIL

Use elbows when installing an end-return.

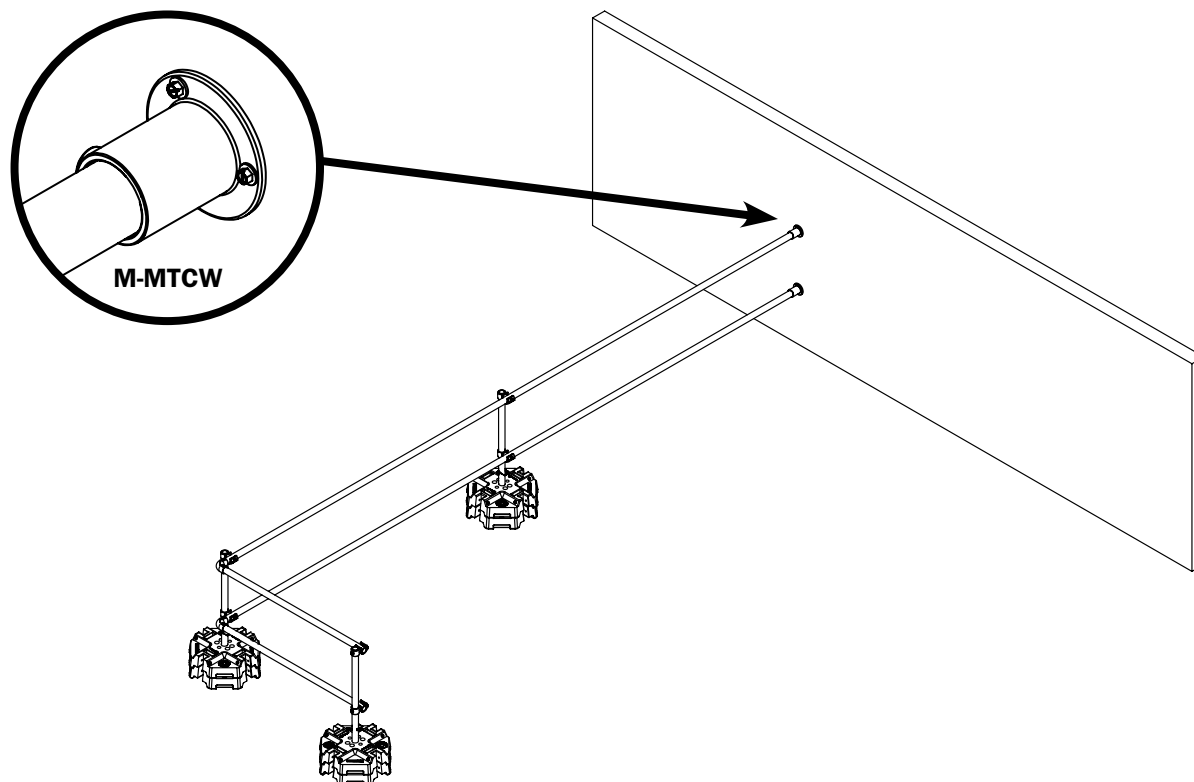
For the installation of a reinforcement return at 40 ft (12 m), use T-clamps (if the roof is parapet-free).



STACKABLE
SYSTEM

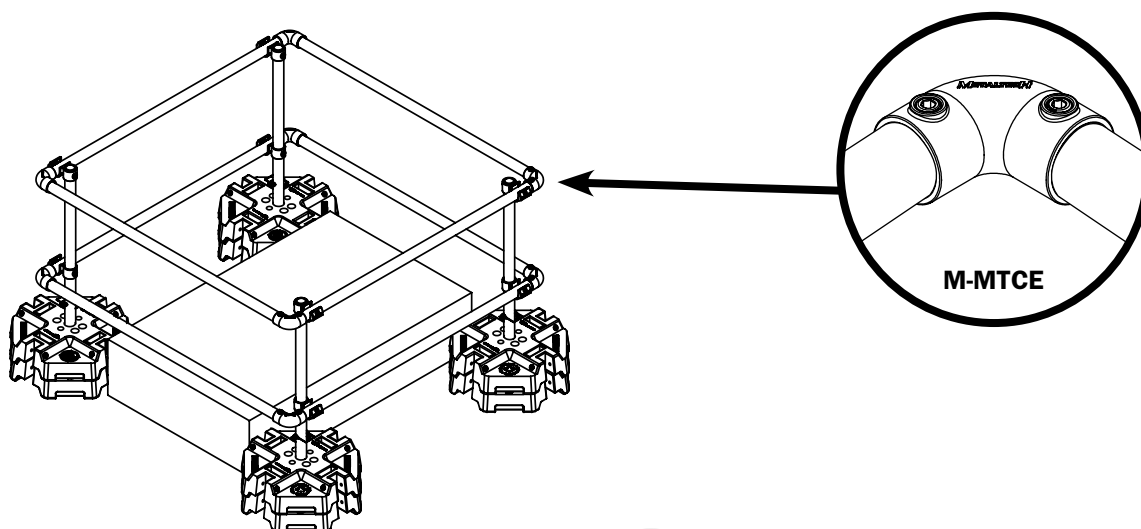
2. STACKABLE CONFIGURATION / WALL JOINT

Use wall joints when necessary to connect the installation to a wall. Use the required hardware according to the type of wall.



3. STACKABLE CONFIGURATION - SKYLIGHTS AND ROOFLIGHTS GUARDRAIL

Use elbows for installation around skylights and rooflights.

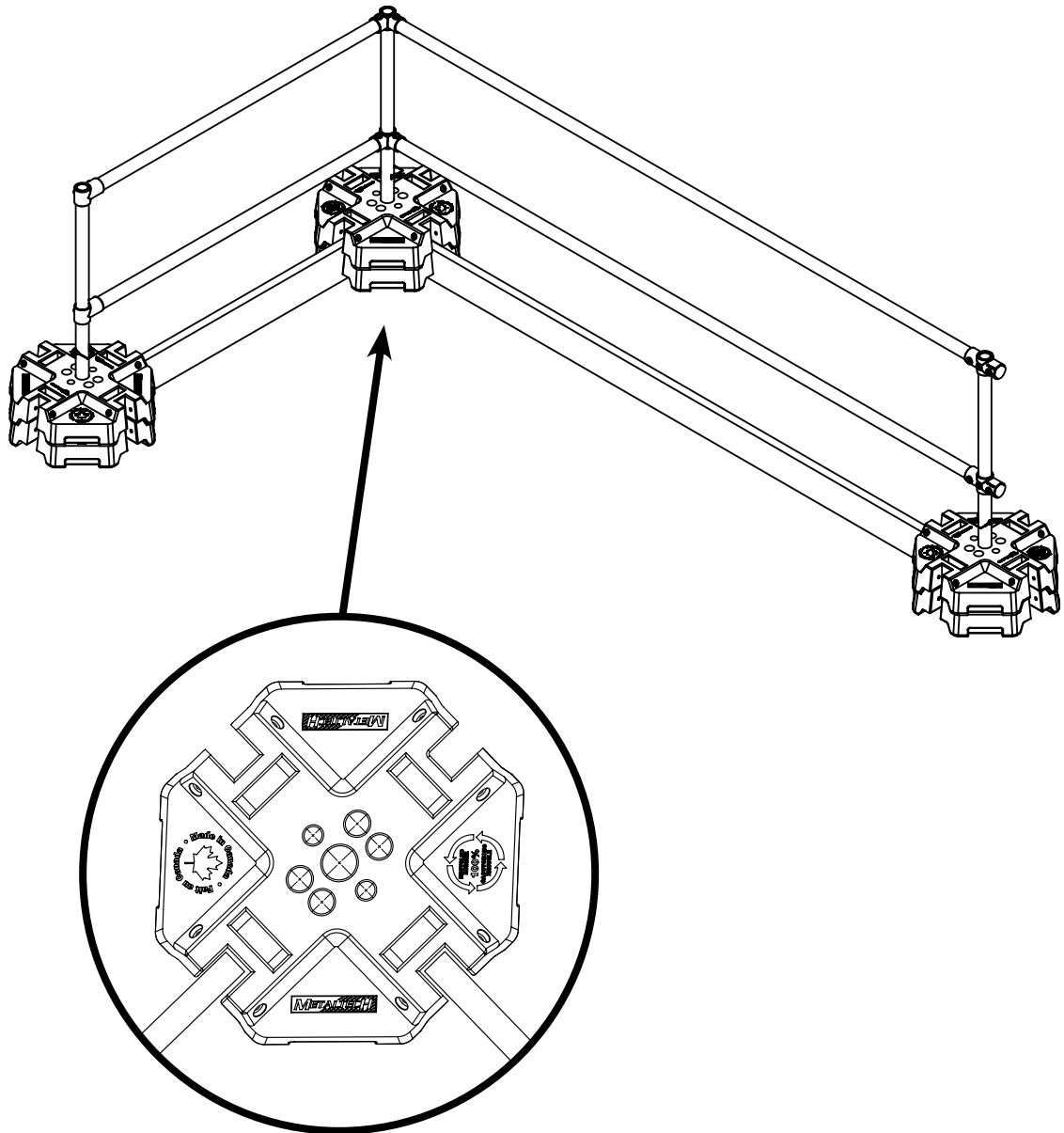


STACKABLE
SYSTEM

4. STACKABLE CONFIGURATION - TOEBOARD

It is possible to install toeboards when necessary, in the case of a parapet-free roof, for example.

Slide the toeboards into the fittings on the bases. Fixing with screws is optional unless local regulations state otherwise. In this case, use the required hardware.

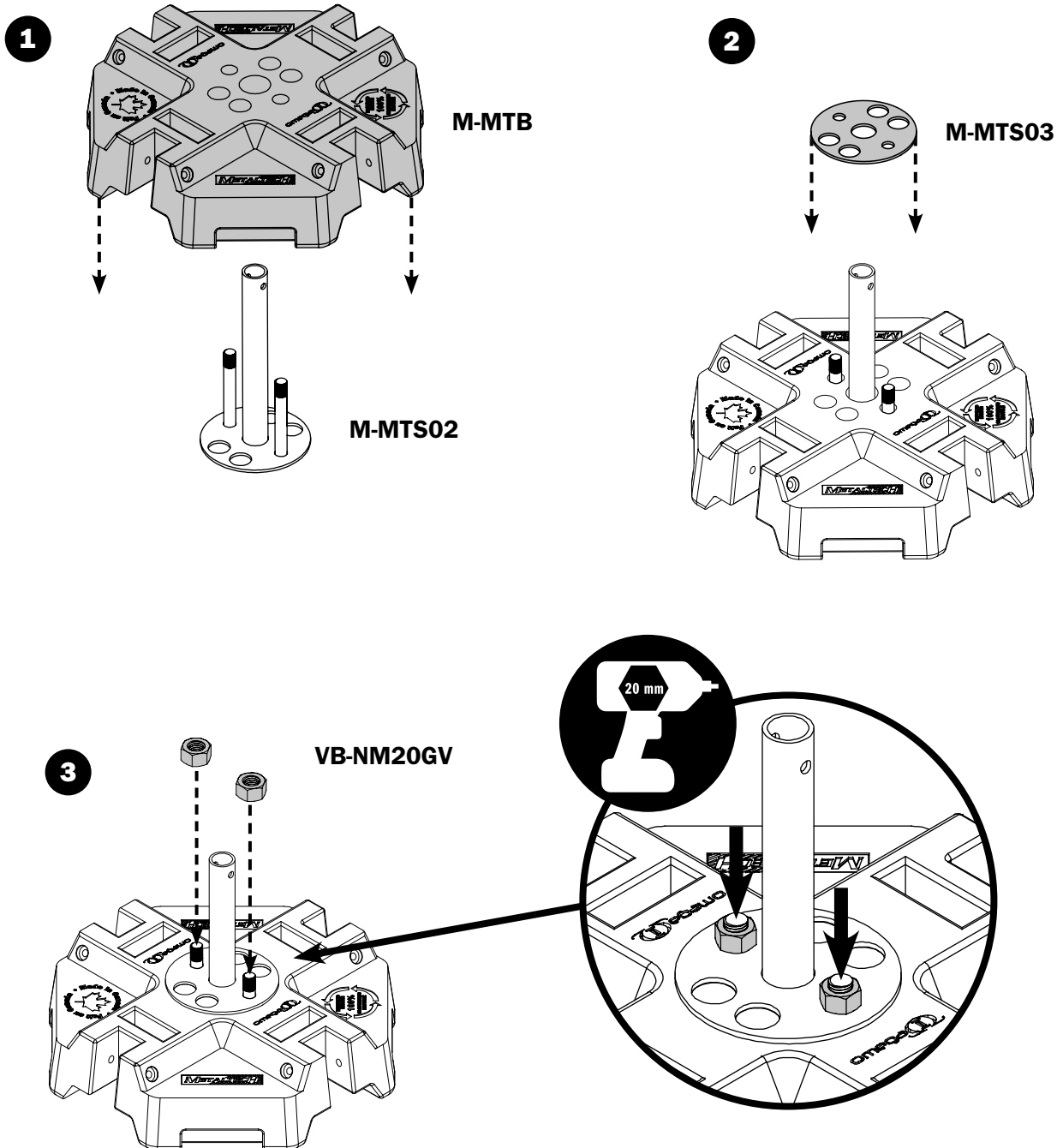


STACKABLE
SYSTEM



ASSEMBLY - STACKABLE CONFIGURATION

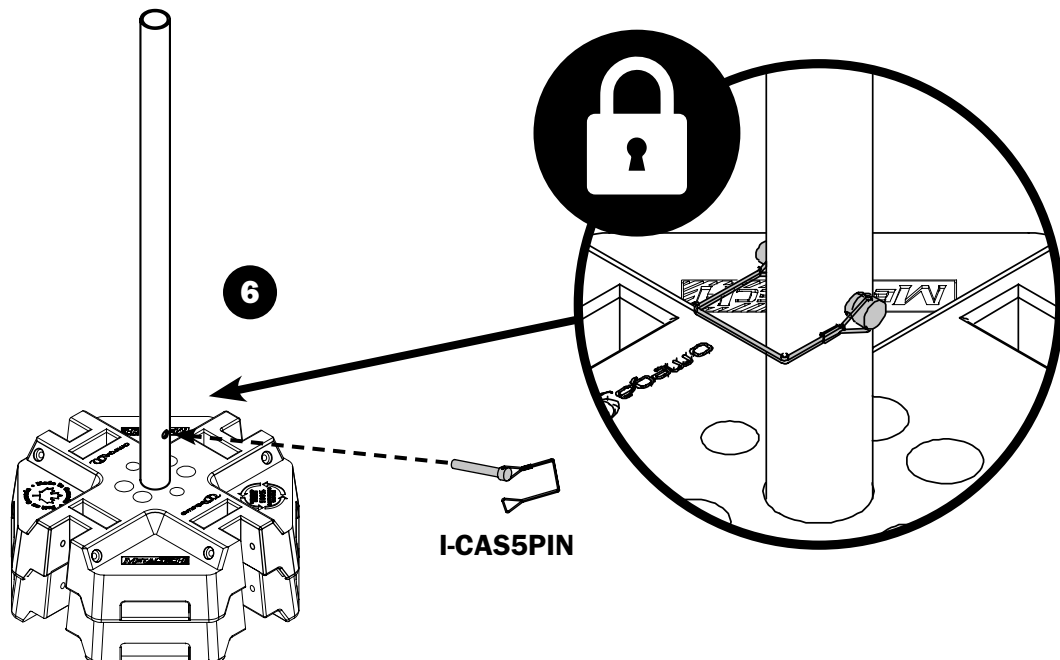
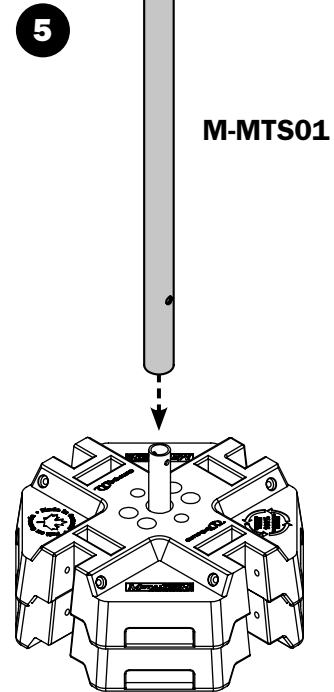
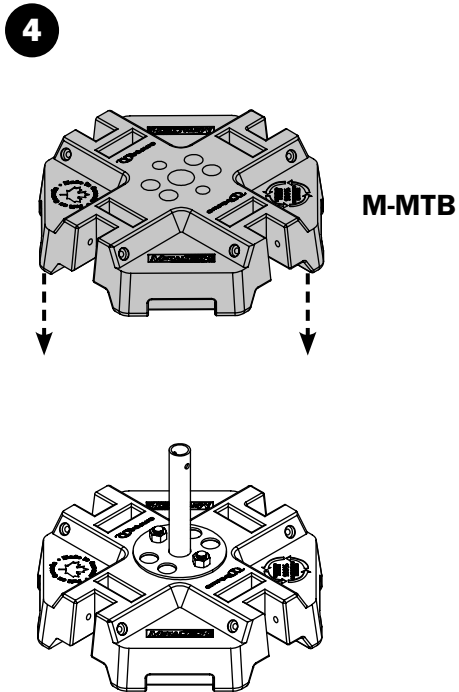
- 1 Place a rubber base on the base support.
- 2 Install a base plate on the base support over the rubber base.
- 3 Secure the assembly by tightening the two nuts with an impact drill.



4 Add a second rubber base to the base support.

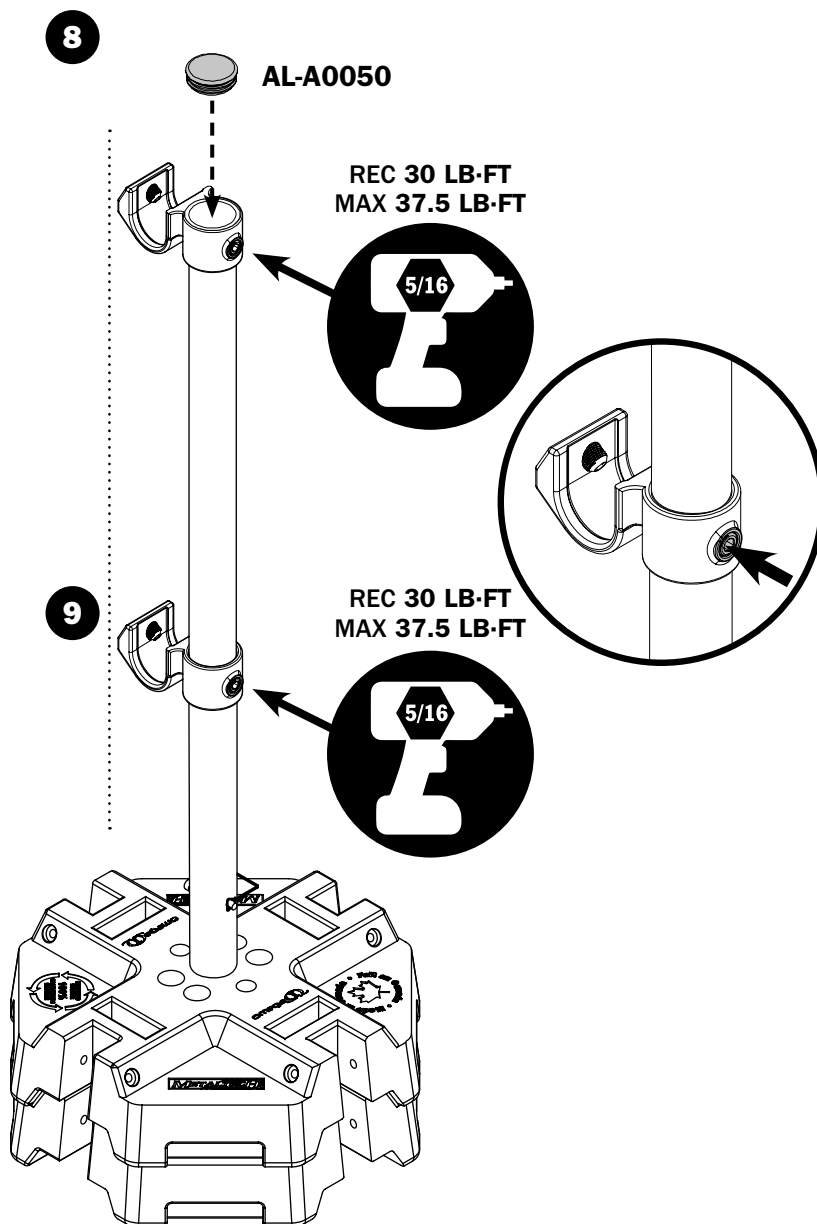
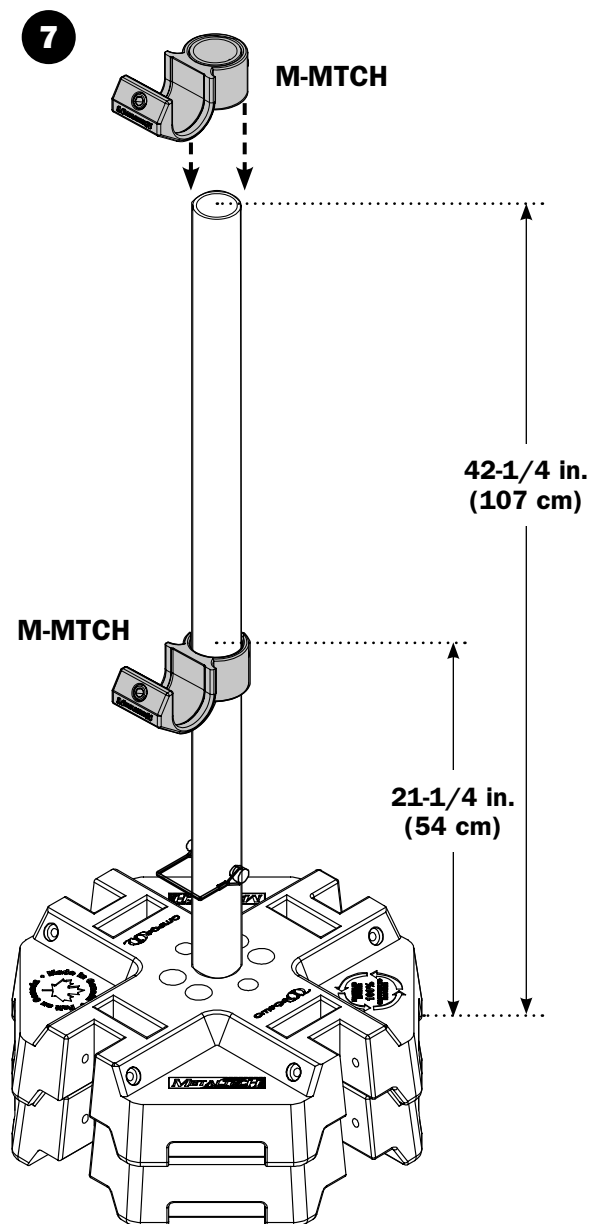
5 Insert the guardrail post on the base support.

6 Lock the assembly with a locking-pin.



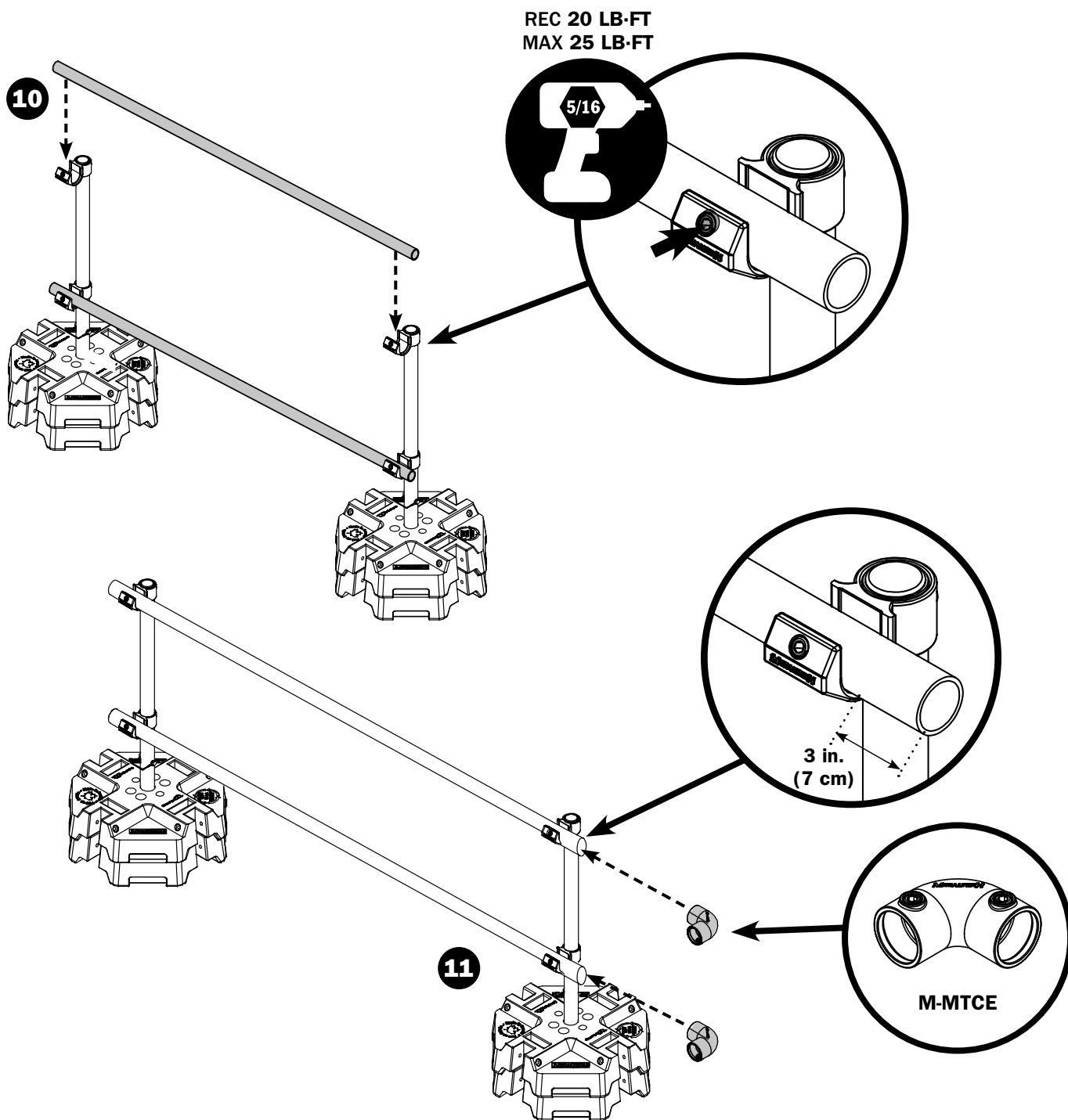
STACKABLE
SYSTEM

- 7** Install the middle hook clamp at 21- $\frac{1}{4}$ in. (54 cm) from the ground, then install the top hook clamp at the top of the post at 42- $\frac{1}{4}$ in. (107 cm) from the ground.
- 8** Install an end cap at the top of the guardrail post.
- 9** Align the hooks of the clamps with the toeboard fitting of the rubber base. Tighten the fastening screws to 30 lb·ft (max 37.5 lb·ft).



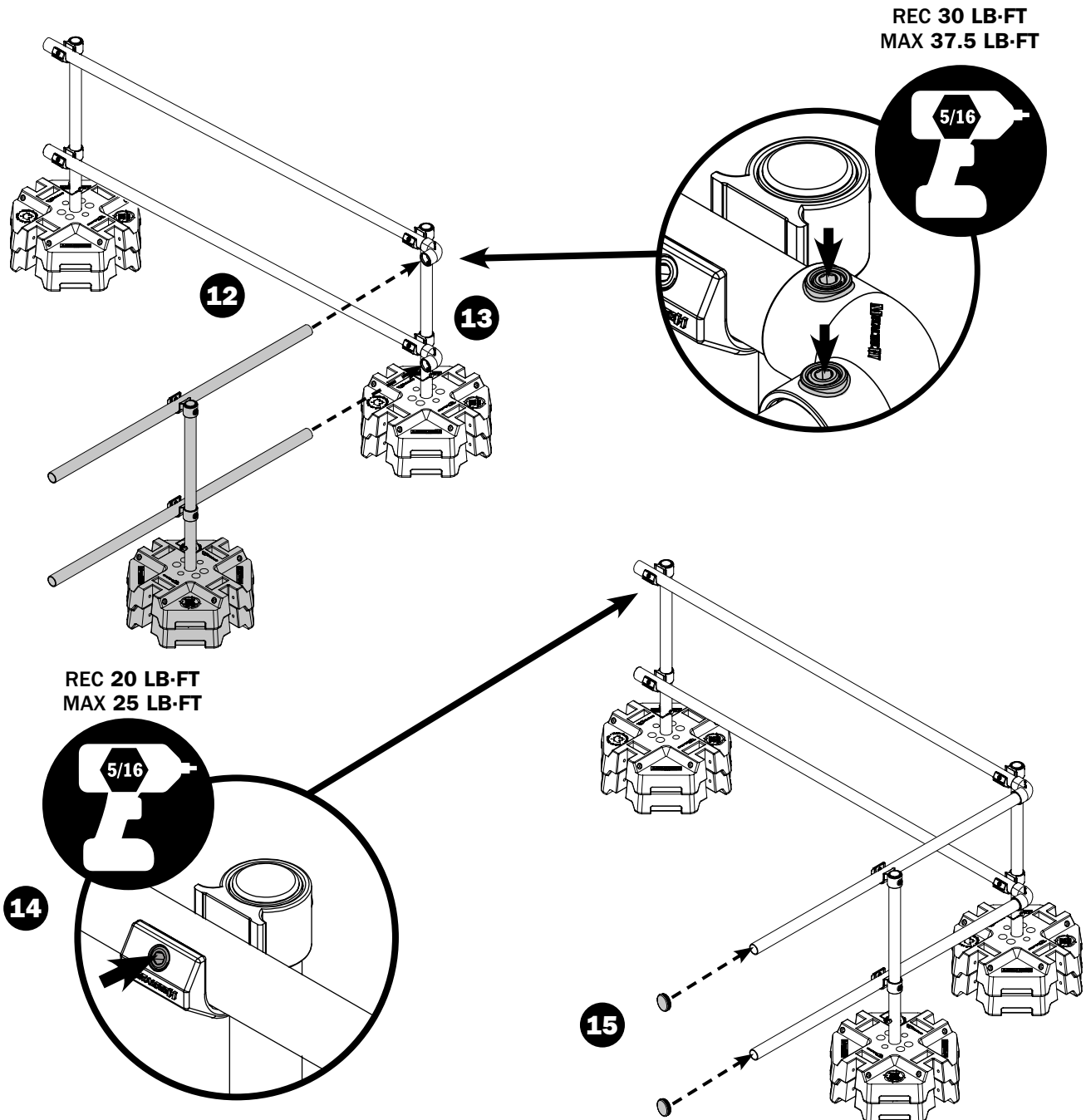
- 10** Install the guardrails in the top and middle hook clamps.
Tighten the front screws to 20 lb·ft (max 25 lb·ft) on all hook clamps.
- 11** Installation of a 60 in. (152 cm) return: Leave 3 in. (7 cm) overhang to the guardrail from the last guardrail post, fix elbows on the middle and top guardrail. Let a space of 1 in. (2.5 cm) between the elbows and the hook clamps after the elbows installation.

NOTE: For a reinforcement return installation at 40 ft (12 m), use T-clamps.



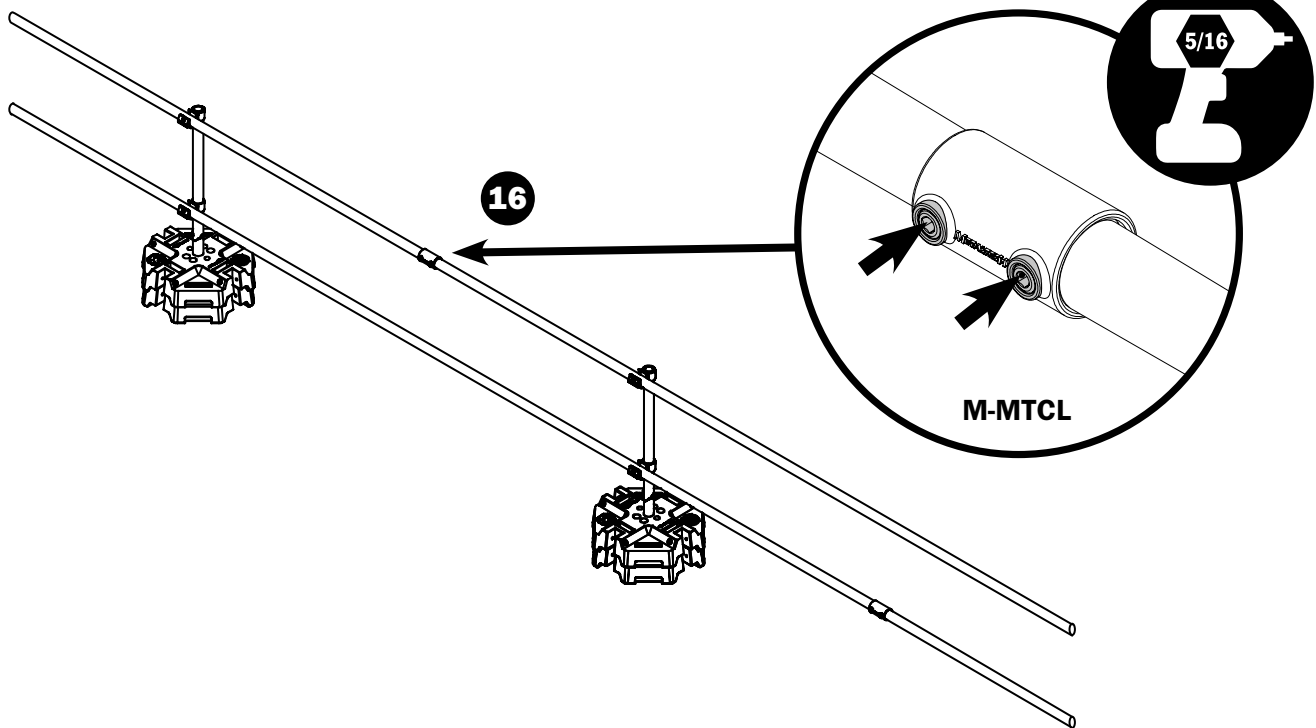
STACKABLE
SYSTEM

- 12** Prepare the return with a guardrail post on its bases centered in the middle of the 60 in. (152 cm) guardrails by following assembly steps 1 to 10. Hook clamps inward.
- 13** Insert the top and middle guardrails into the elbows and tighten the clamp screws at 30 lb·ft (max 37.5 lb·ft) on each elbow to secure them in place.
- 14** Tighten the front screws to 20 lb·ft (max 25 lb·ft) of all hook clamps to fix the guardrails in place to the rest of the installation.
- 15** Install the end caps on the ends of the guardrail returns.



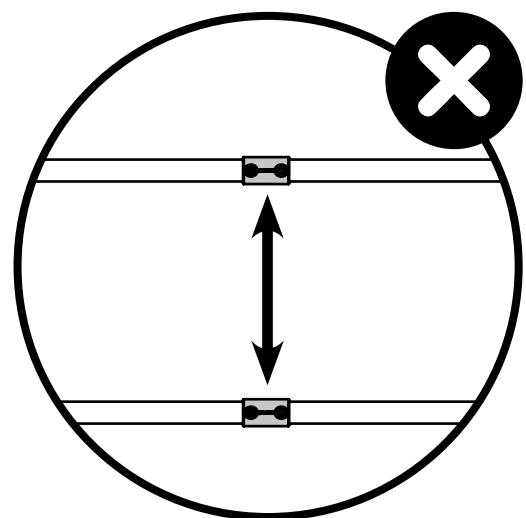
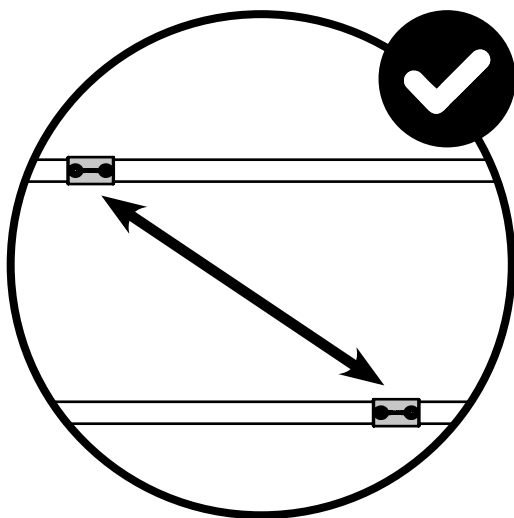
- 16** To connect guardrails, use joints and tighten the screws to 30 lb·ft (max 37.5 lb·ft).

REC 30 LB·FT
MAX 37.5 LB·FT



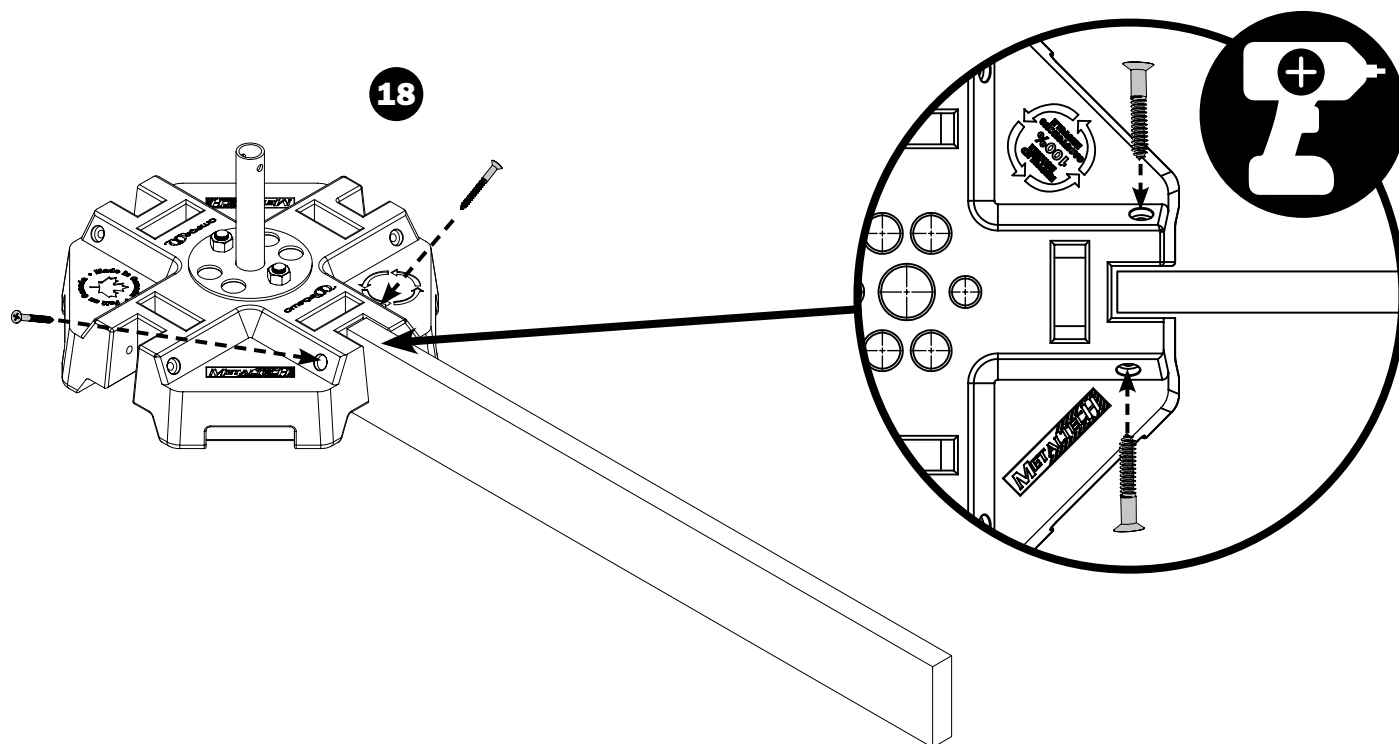
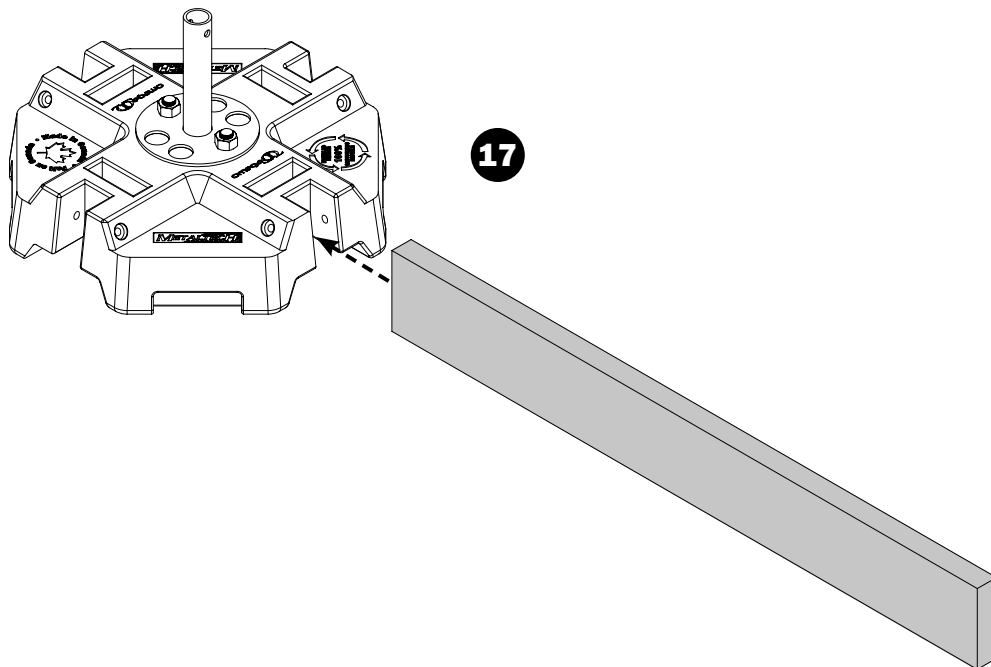
NOTE

It is recommended that the joints between two guardrail tubes do not overlap between the middle and top rails, but rather are offset from one another.



STACKABLE CONFIGURATION - INSTALLATION OF A WOODEN TOEBOARD

- 17** Install the toeboard in the base fitting.
- 18** Screw the toeboard to the base using two screws (use the required hardware).





STANDARD SYSTEM

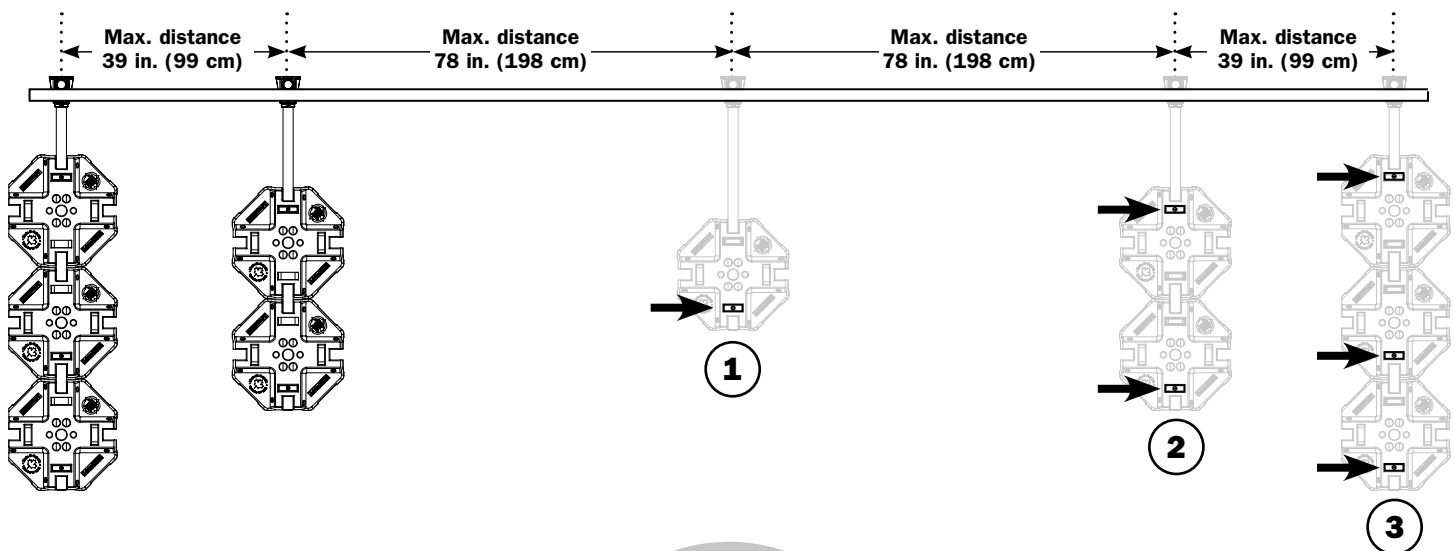
The standard system is based on the principle that the rubber bases are installed one after the other on base tubes. Each end of the installation is reinforced by the installation of guardrail posts with two and three bases, which are installed 39 in. (99 cm) apart according to the diagram below. Between these ends, the other guardrail posts are installed at 78 in. (198 cm) intervals.

Note: refer to the safety instructions section on page 2 of this document in order to comply with the conformity of a “standard” type installation.

* NOTE: INSTALLATION RULES FOR TUBE CLAMPS IN RUBBER BASES

It is not essential to install two (2) tube clamps per rubber base, one (1) is sufficient if the installation rules below are respected:

1. Installation of a single base: the tube clamp must be installed in the fitting of the base at the opposite end of the guardrail (refer to the diagram below).
2. Installation of two bases: install a tube clamp in the closest fitting to the guardrail of the first base. Install the second tube clamp in the fitting of the second base at the opposite end of the guardrail (refer to the diagram below).
3. Installation of three bases: install a tube clamp in the closest fitting to the guardrail of the first base. Install the second tube clamp in the fitting of the second base at the opposite end of the guardrail. Install the third tube clamp in the fitting of the third base at the opposite end of the guardrail (refer to the diagram below).

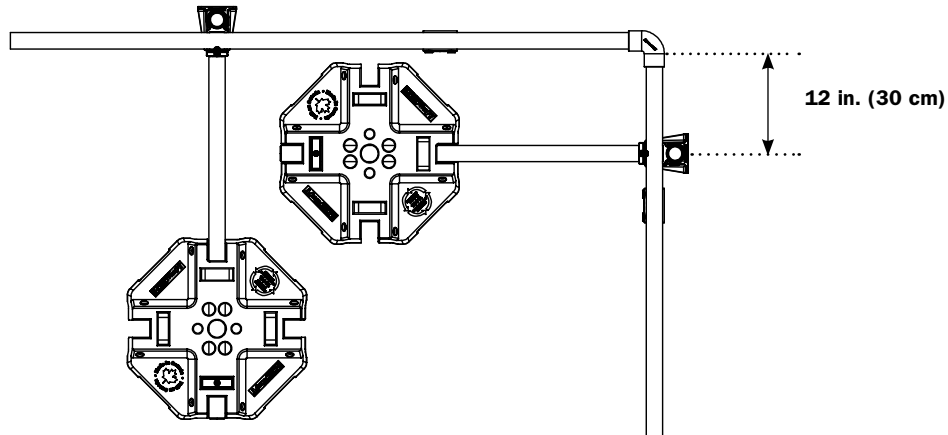


STANDARD
SYSTEM

STANDARD CONFIGURATIONS

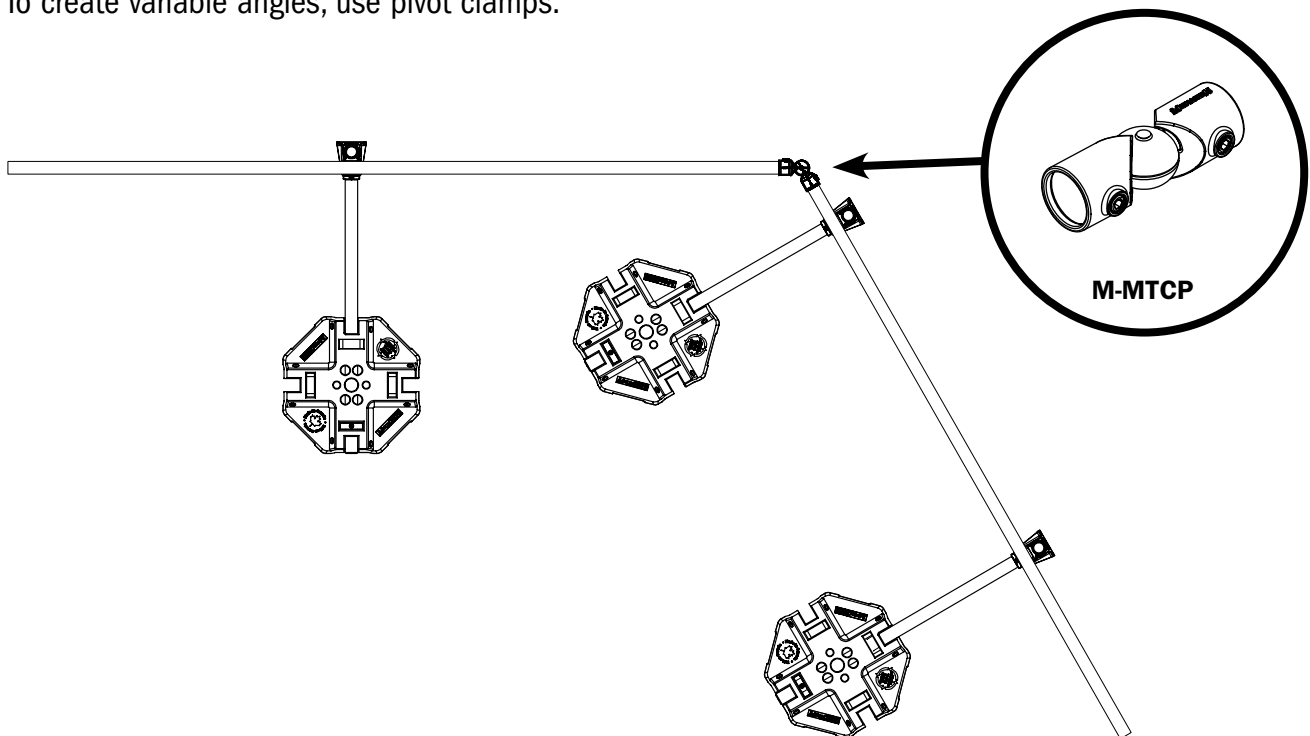
1. STANDARD CONFIGURATION - CORNER

When installing in a corner, a guardrail post should be installed within 12 in. (30 cm) of the corner. Maintain a maximum of 78 in. (198 cm) between the guardrail posts along the installation.



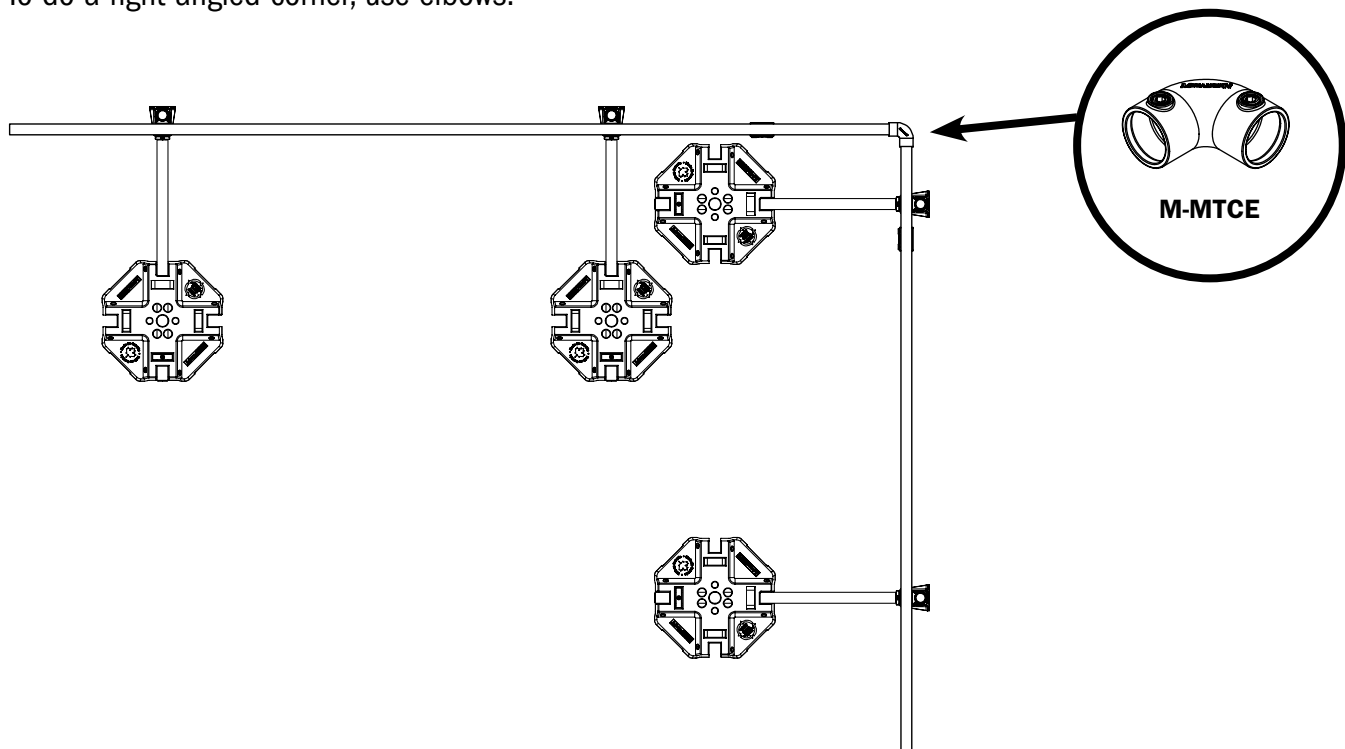
2. STANDARD CONFIGURATION - GUARDRAIL WITH PIVOT CLAMP

To create variable angles, use pivot clamps.



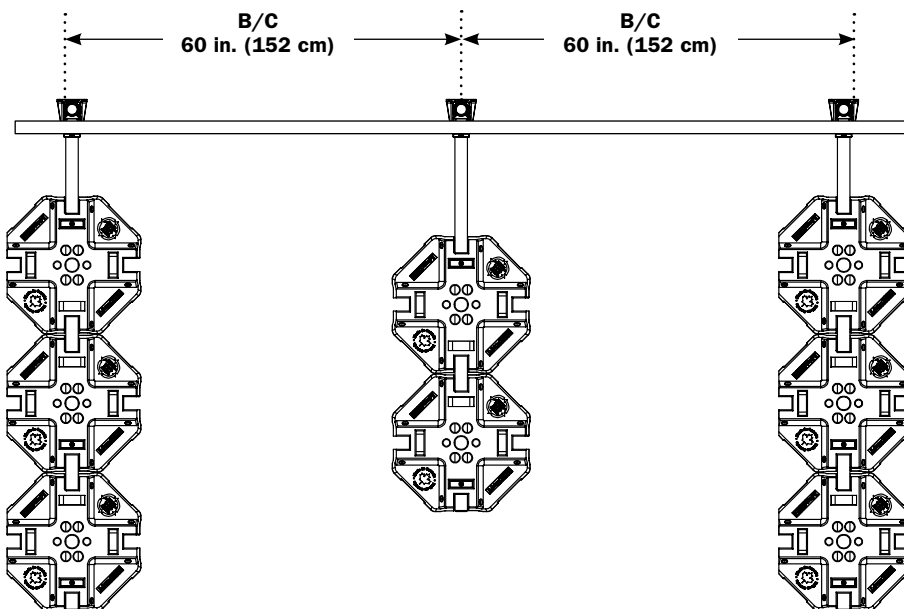
3. STANDARD CONFIGURATION - GUARDRAIL WITH ELBOW JOINT

To do a right-angled corner, use elbows.



4. STANDARD CONFIGURATION - 10 FT (3 M) GUARDRAIL

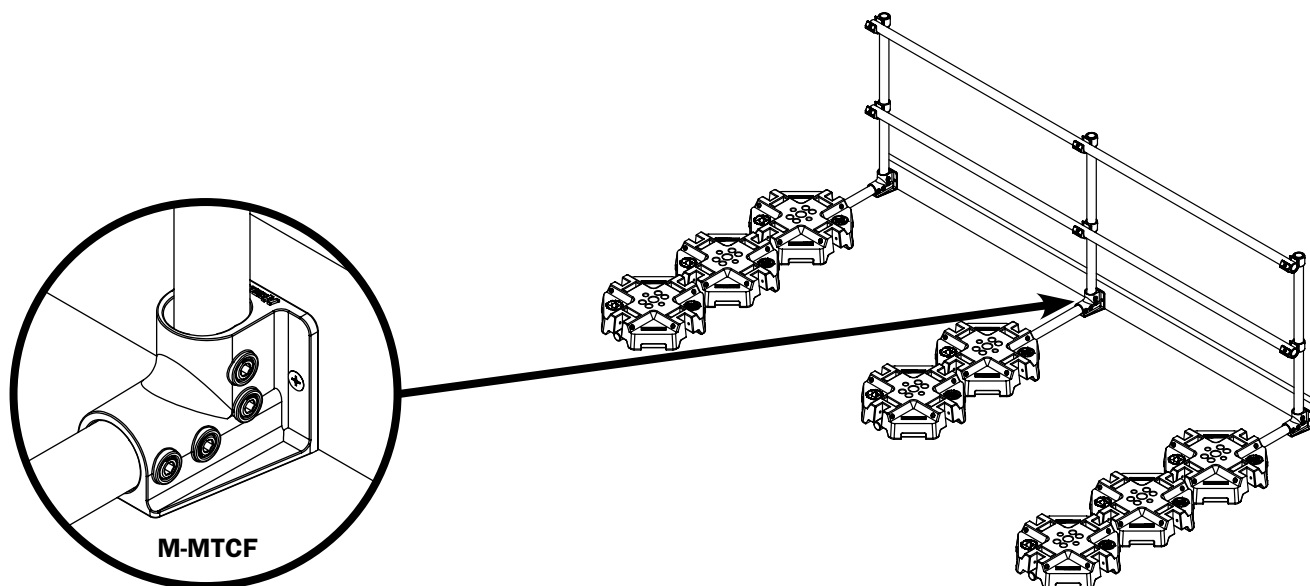
The minimum length of a standard installation must be 10 ft (3 m).



STANDARD
SYSTEM

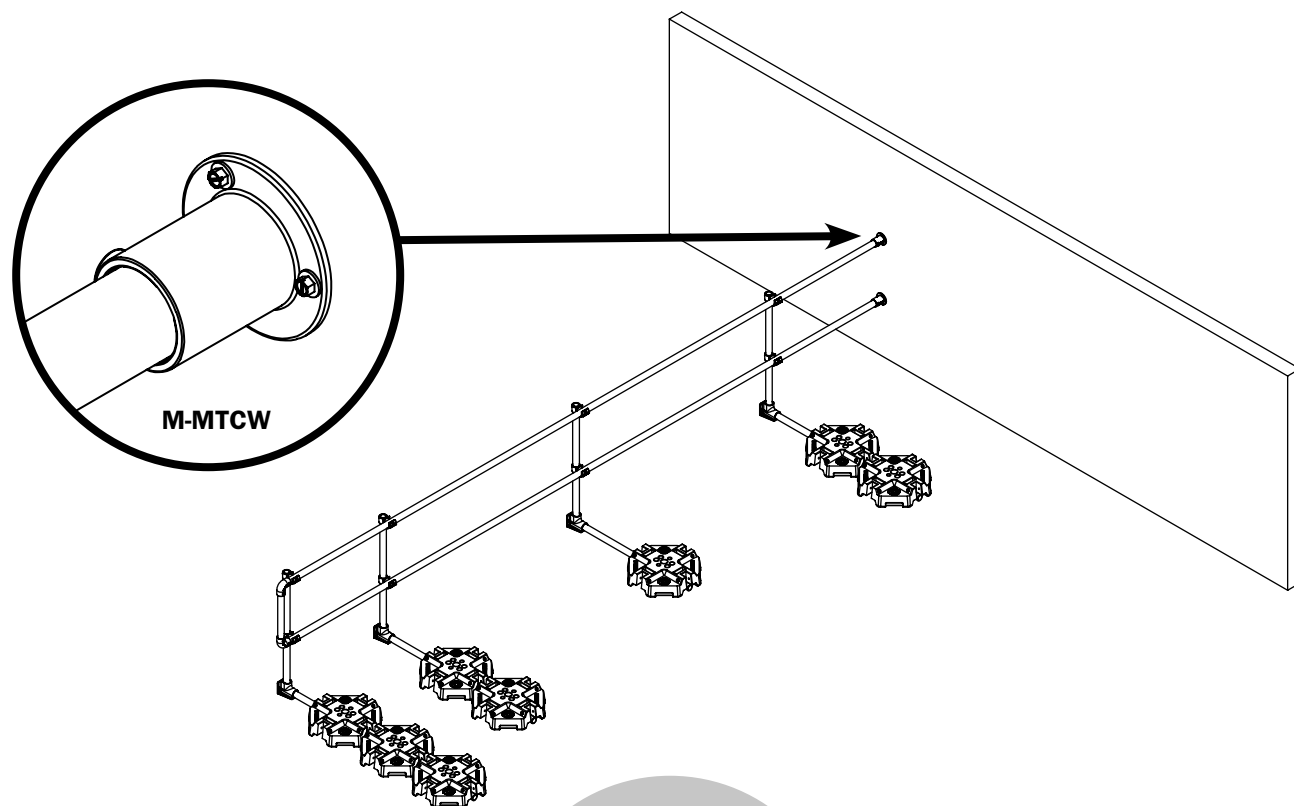
5. STANDARD CONFIGURATION - TOEBOARD

It is possible to install toeboards when necessary, in the case of a parapet-free roof, for example. Fix the wooden toeboards to the foot clamps using wood screws. For the installation of aluminum toeboards, use the required hardware.



6. STANDARD CONFIGURATION - WALL JOINT

Use wall joints when necessary to connect the installation to a wall. Use the required hardware according to the type of wall.



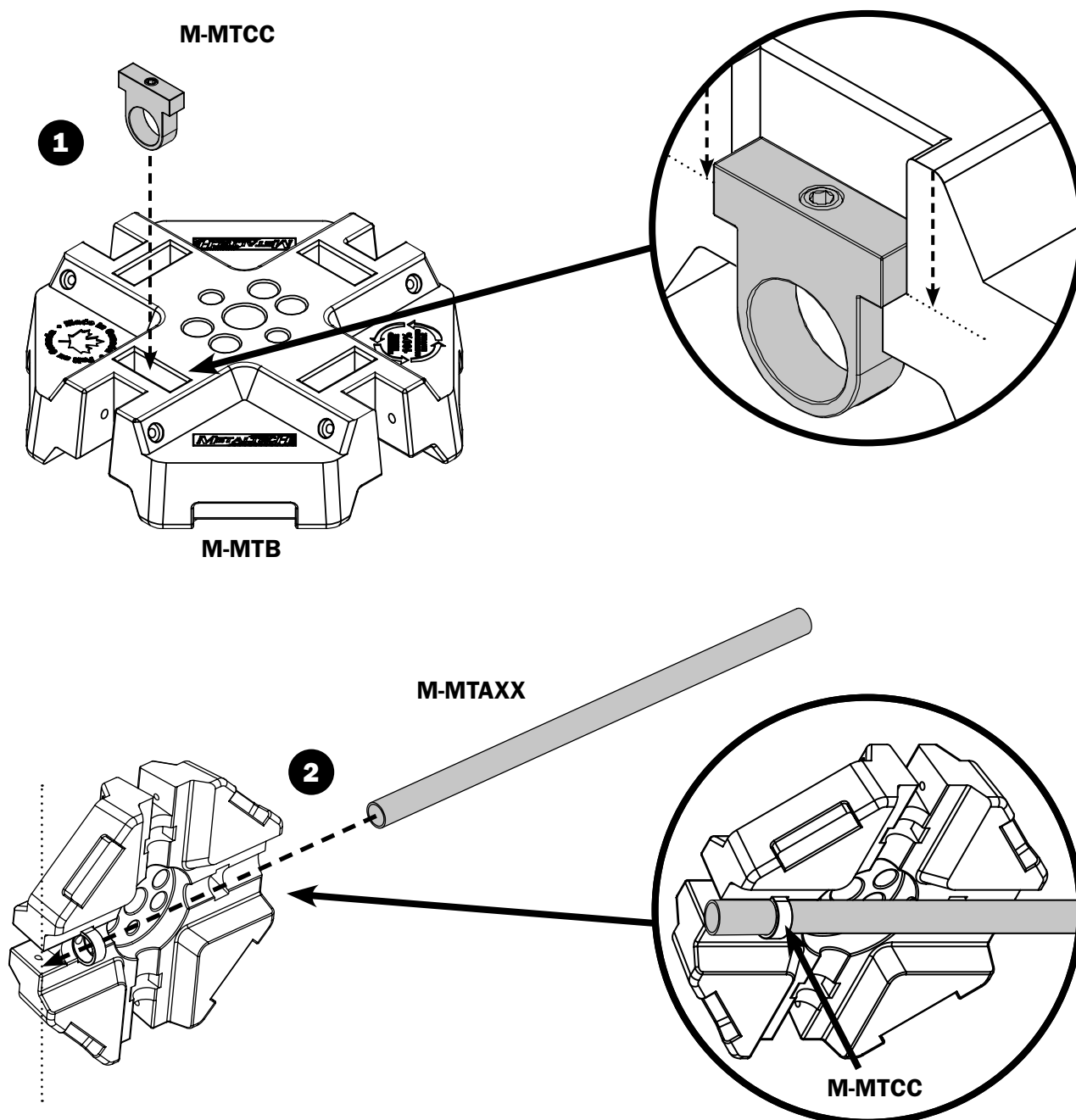
STANDARD
SYSTEM



ASSEMBLY - STANDARD CONFIGURATION

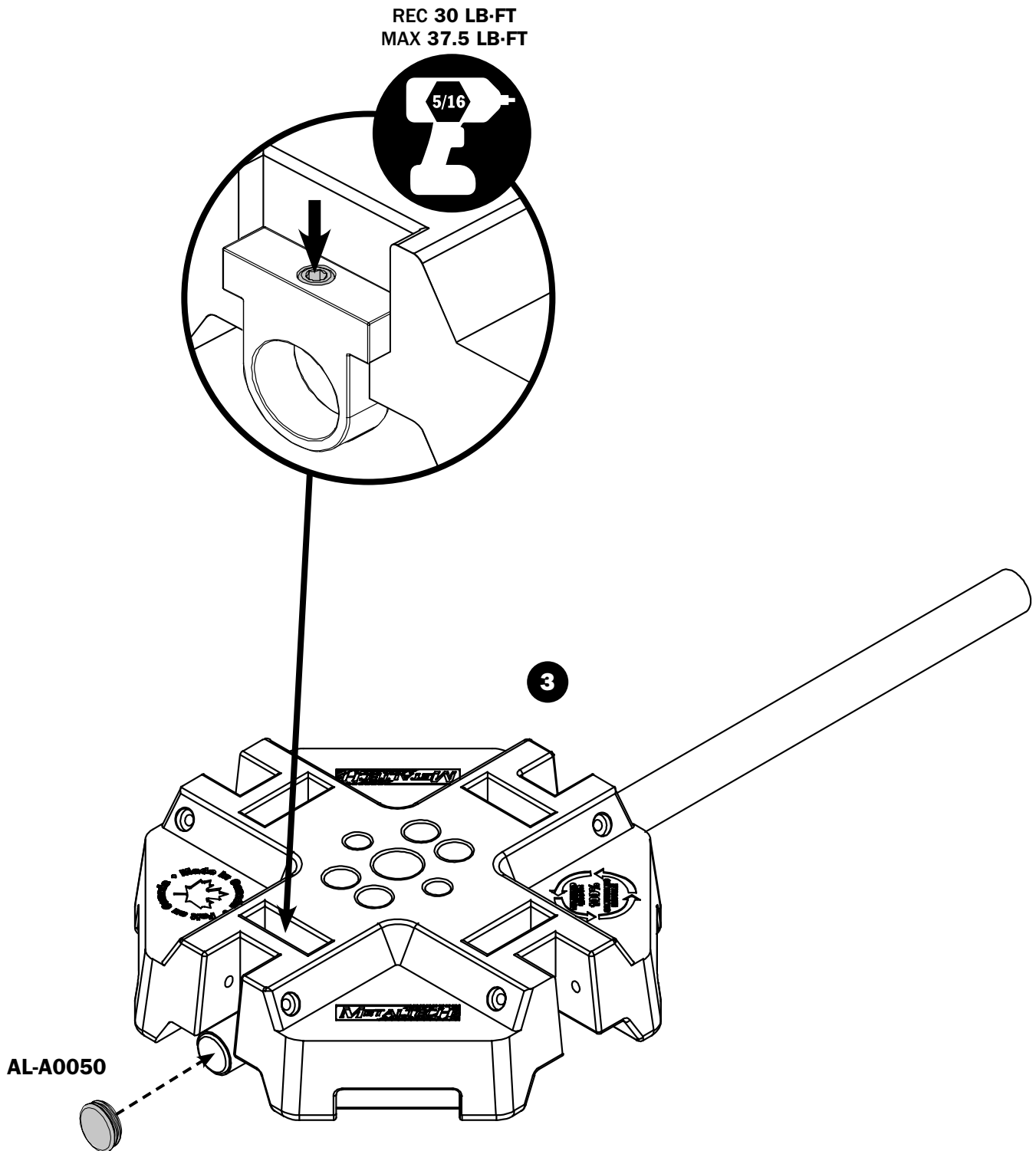
BASE ASSEMBLY - STANDARD CONFIGURATION

- 1 Insert a tube clamp into the fitting of the base at the opposite end of the guardrail. Make sure that the tube clamp is at the bottom of the fitting. Only one tube clamp per base is required.
- 2 Turn the base to the side and slide the base tube into the opening of the tube clamp under the base, taking care to let the tube stick out on one side of the base.



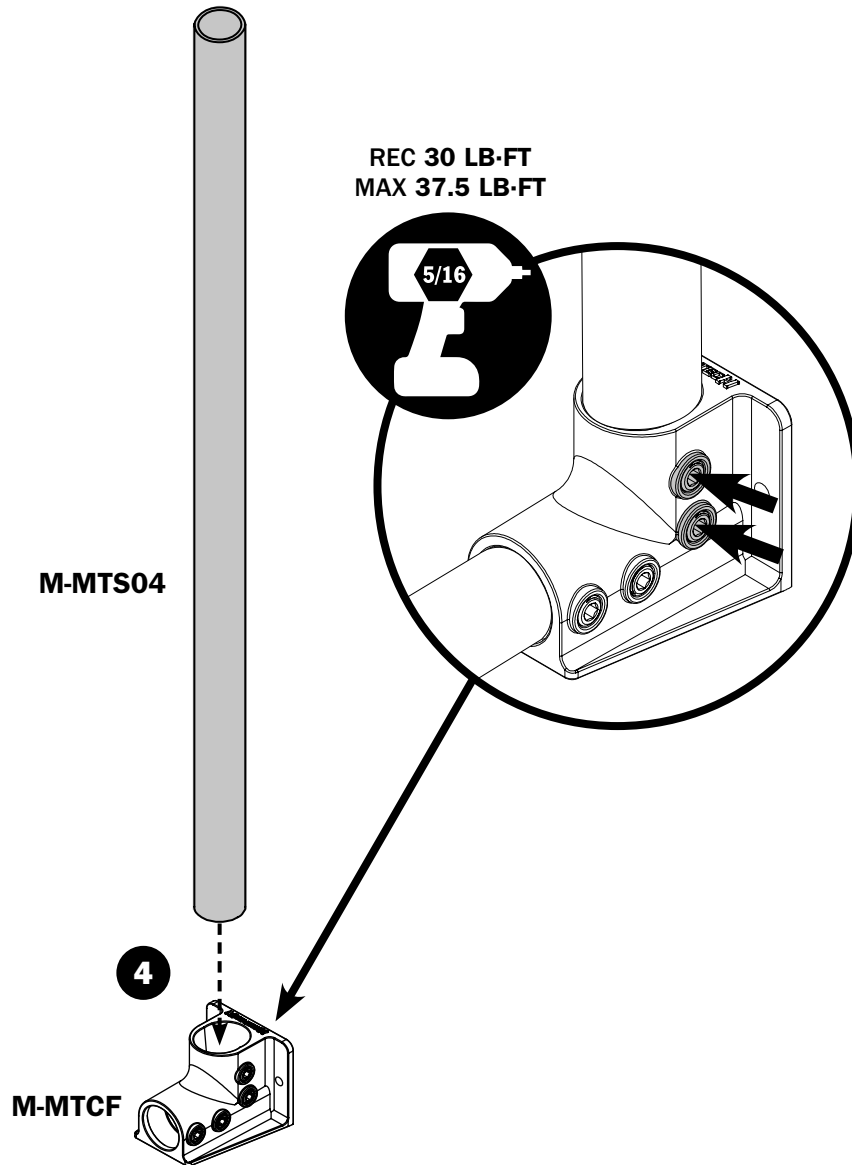
- 3** Turn the base over and tighten the tube screw to 30 lb·ft (max 37.5 lb·ft) on the tube. Make sure the elements are well fixed together.

Install the end cap at the end of the tube as shown below.



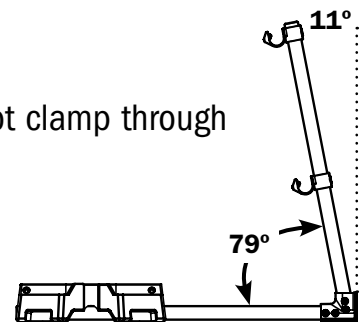
ASSEMBLY OF GUARDRAIL POSTS - STANDARD CONFIGURATION

- 4 Insert a guardrail post into a foot clamp, making sure it sits well at the bottom, then tighten the upper screws to 30 lb·ft (max 37.5 lb·ft) of the foot clamp.

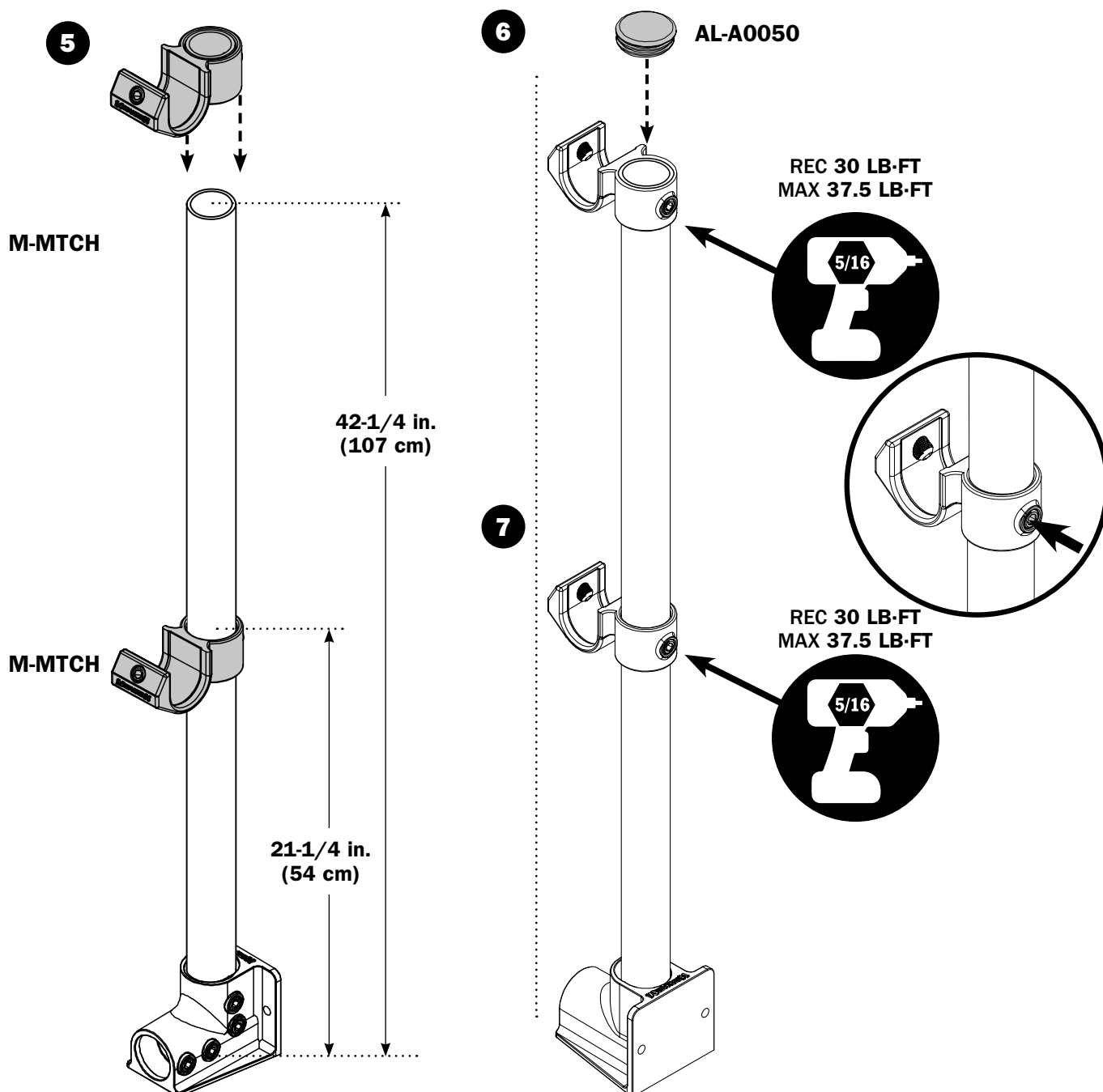


* NOTE

It is possible to position the guardrail post at 11 degrees in the foot clamp through the recesses inside the clamp.

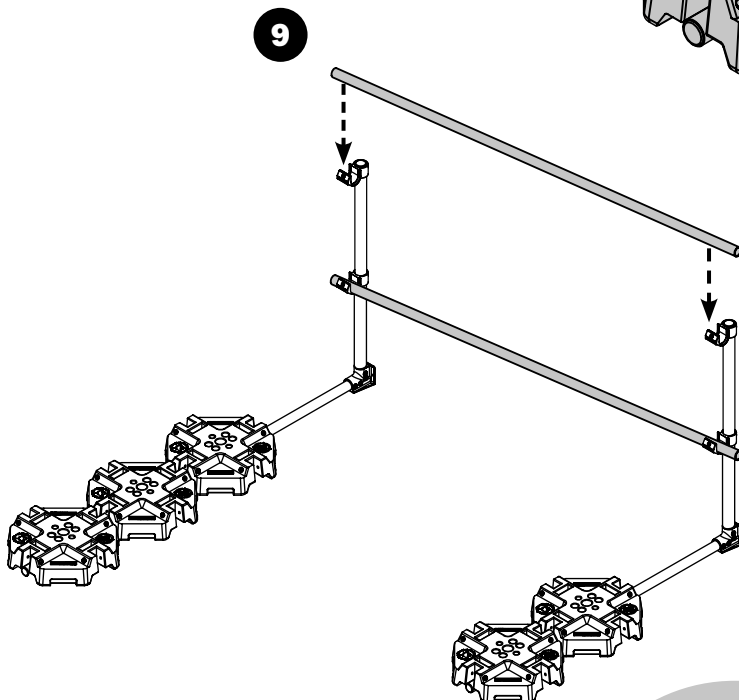
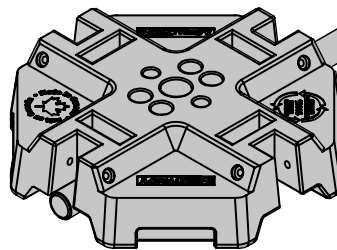
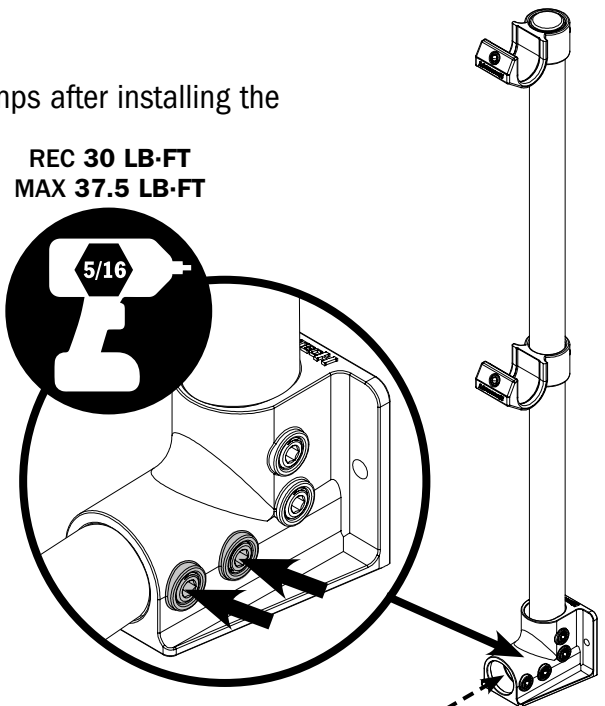


- 5** Install the middle hook clamp at 21- $\frac{1}{4}$ in. (54 cm) from the ground, then install the top hook clamp at the top of the post at 42- $\frac{1}{4}$ in. (107 cm) from the ground.
- 6** Install an end cap at the top of the guardrail post.
- 7** Align the hooks on the clamps with the opening in the foot clamp. Tighten the fastening screws to 30 lb·ft (max 37.5 lb·ft).

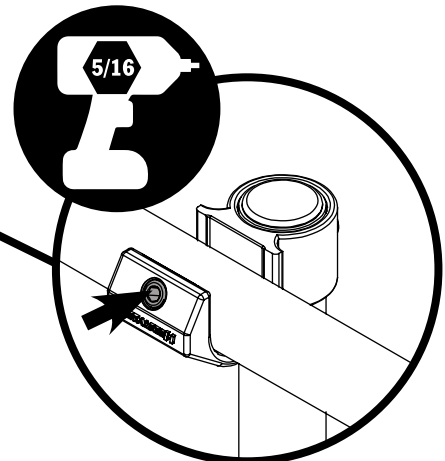


8 Insert the base assembled in step 3 into the foot clamp. Make sure that the tube is inserted at the bottom of the foot clamp. Tighten the two lower screws of the foot clamp at 30 lb·ft (max 37.5 lb·ft).

9 Install the top and middle rails in the hook clamps. Tighten the front screws to 20 lb·ft (max 25 lb·ft) on all clamps after installing the guardrails..



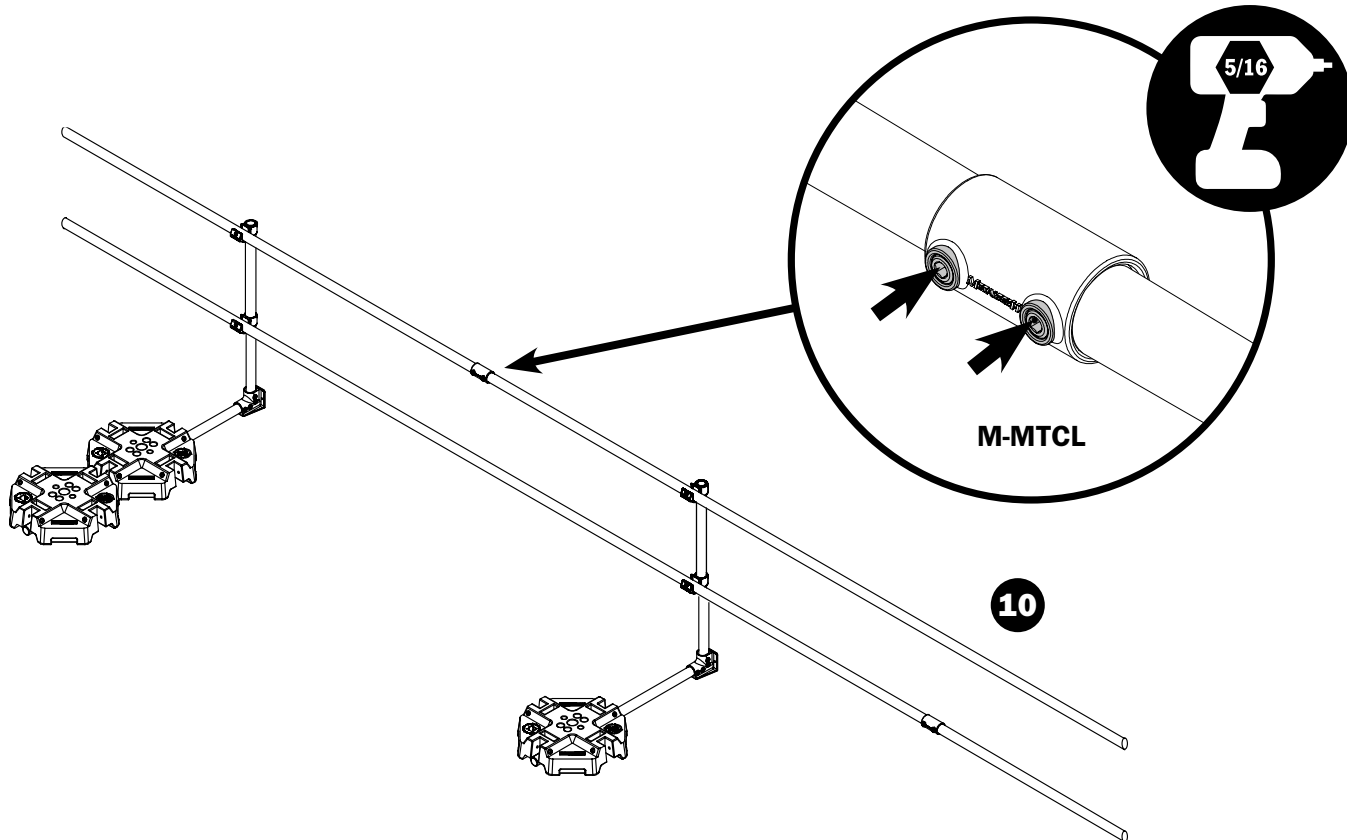
REC 20 LB-FT
MAX 25 LB-FT



STANDARD
SYSTEM

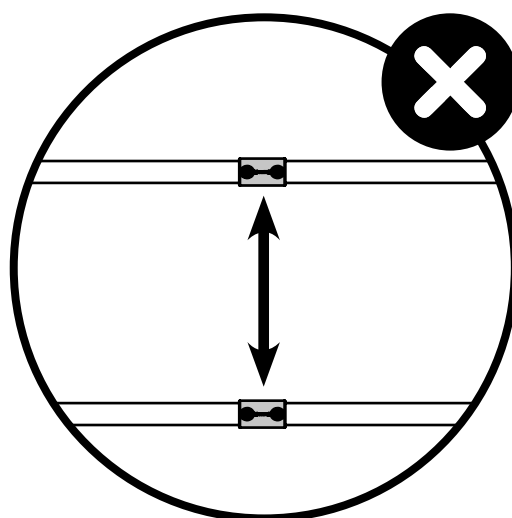
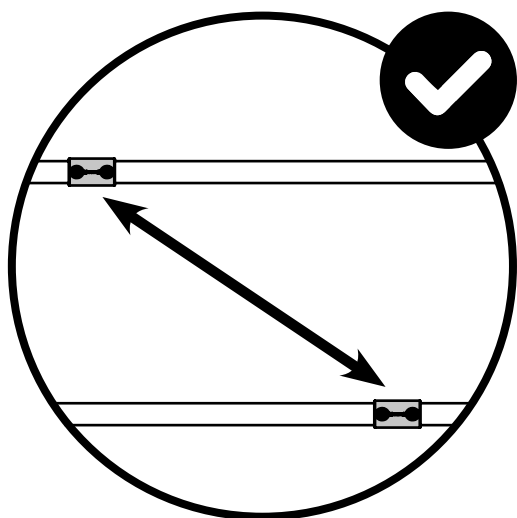
- 10** To connect guardrails, use joints and tighten the screws to 30 lb·ft (max 37.5 lb·ft).

REC 30 LB·FT
MAX 37.5 LB·FT



NOTE

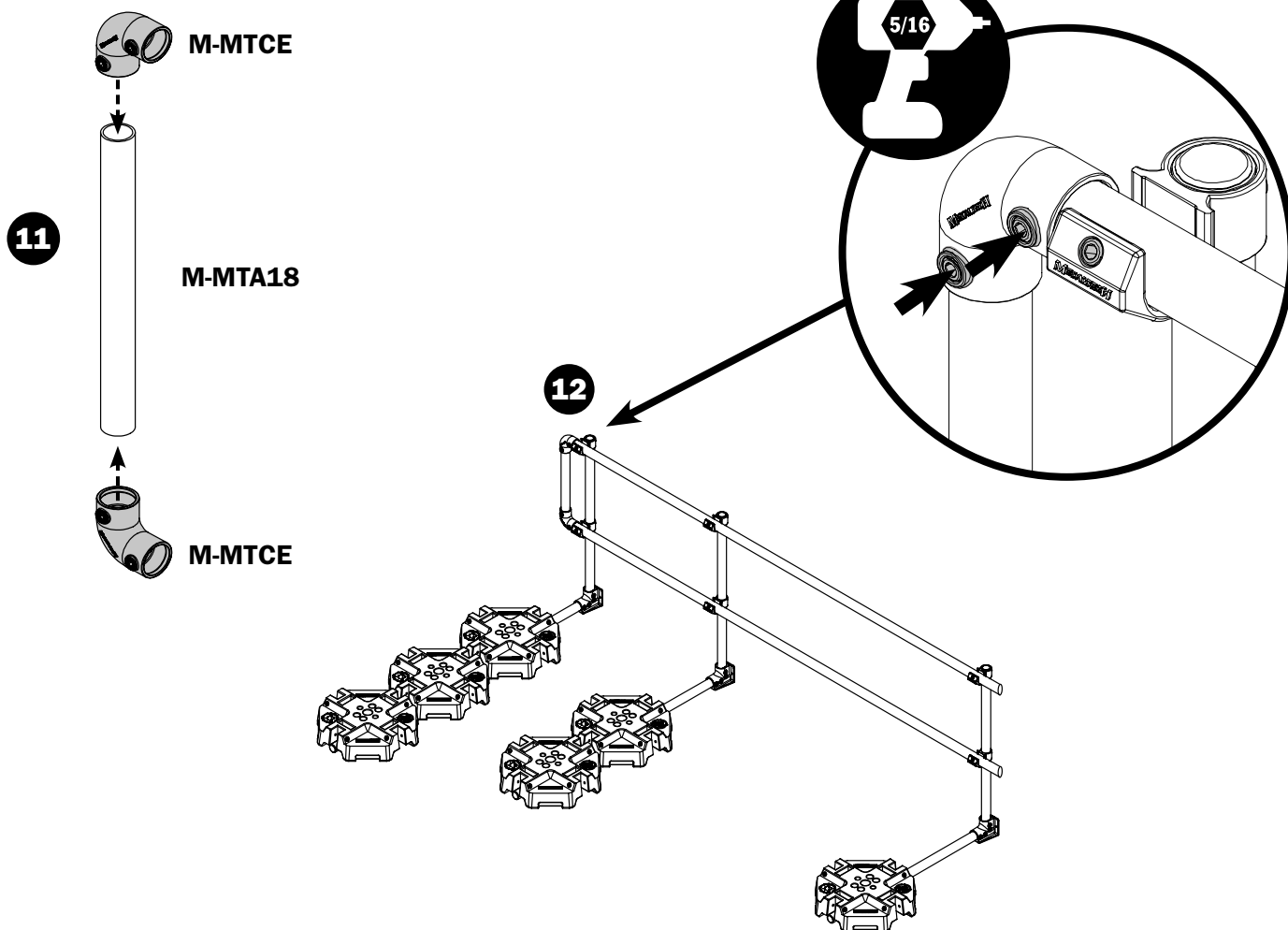
It is recommended that the joints between two guardrail tubes do not overlap between the middle and top rails, but rather are offset from one another.



11 To assemble elbow extensions, use two elbows and one end tube.

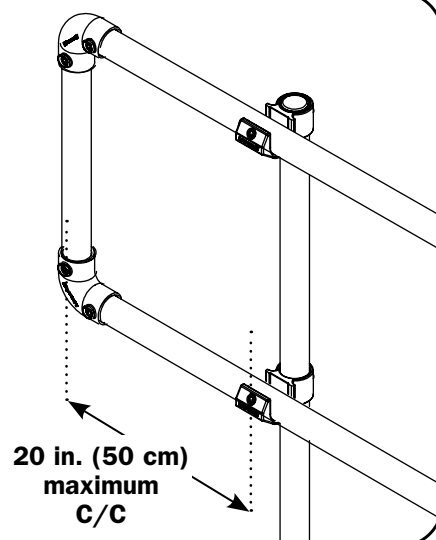
12 Tighten the screws to 30 lb·ft (max 37.5 lb·ft) on each elbow.

REC 30 LB-FT
MAX 37.5 LB-FT



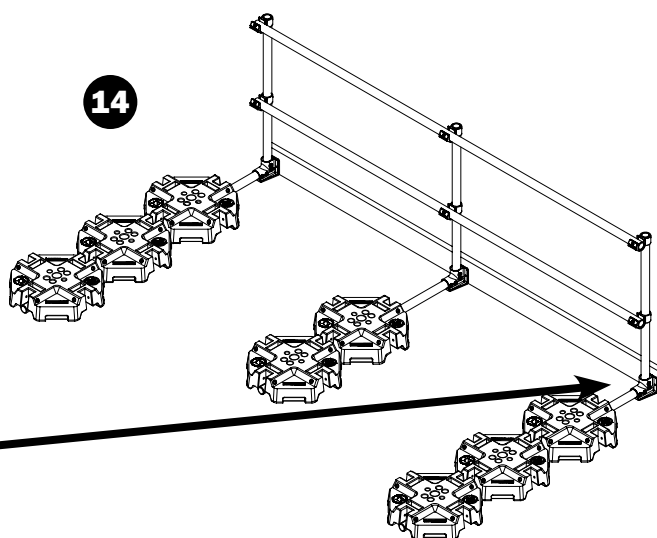
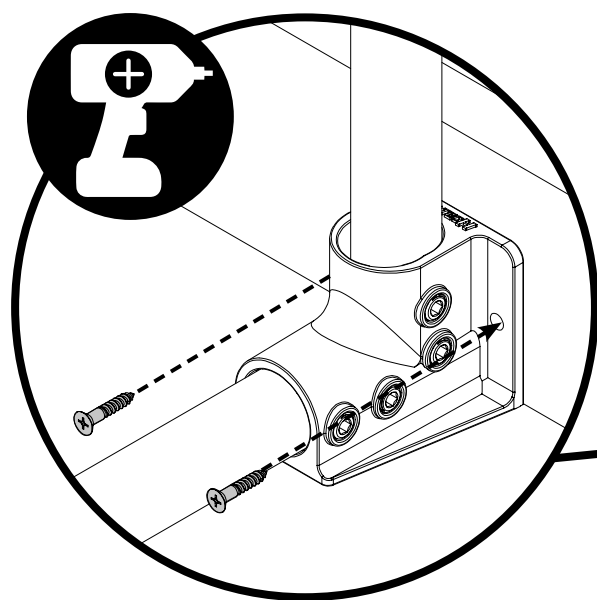
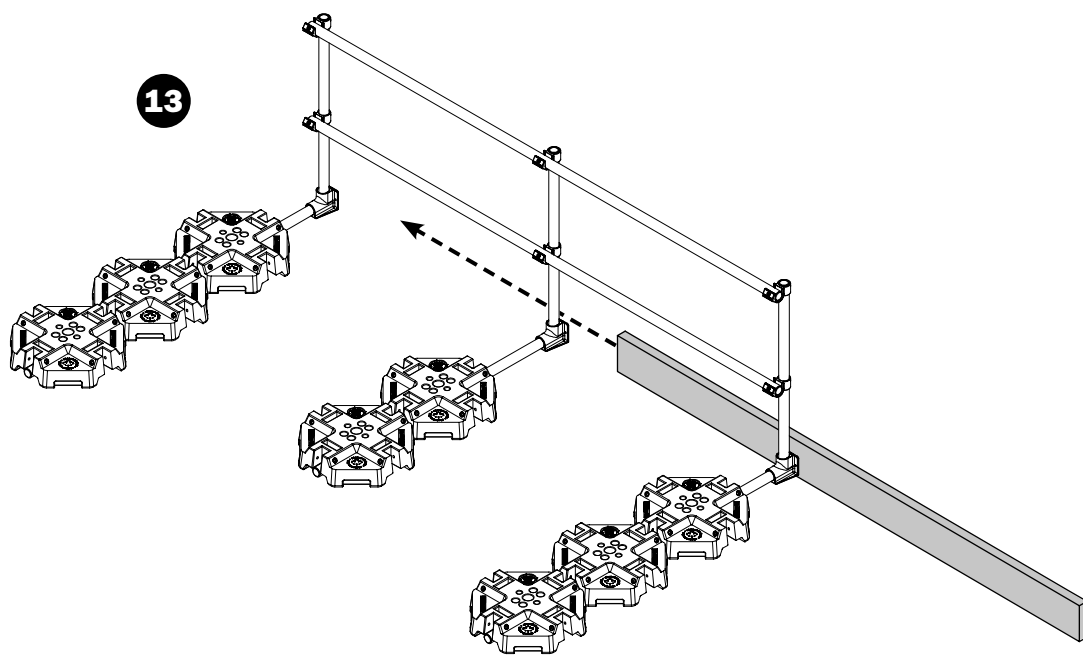
*** NOTE**

Elbow-end extensions must not exceed more than 20 in. (50 cm) the previous guardrail post.



STANDARD CONFIGURATION - INSTALLATION OF A TOEBOARD

- 13** Install the toeboard behind the foot clamps.
- 14** Screw the toeboard to the foot clamp using two screws (use the required hardware).





INSTRUCTIONS

WARNING LINE



Picture may differ from actual product.



**READ THESE INSTRUCTIONS CAREFULLY BEFORE USING THIS PRODUCT.
KEEP THIS MANUAL HANDY FOR FUTURE REFERENCE.**

**THIS EQUIPMENT MEETS ANSI,
NBC, CNESST, CSTC, RSST,
OBC, OSHA AND WORKSAFE BC
STANDARDS.**

OPERATIONAL SAFETY



READ BEFORE BEGINNING ASSEMBLY.

**FAILURE TO UNDERSTAND AND FOLLOW ALL SAFETY RULES AND ASSEMBLY INSTRUCTIONS
COULD RESULT IN SERIOUS INJURY OR DEATH.**



METAL CONDUCTS ELECTRICITY:

Do not use this equipment where contact may be made with power lines or other live electrical circuits.

INSTRUCTIONS AND SAFETY

- Do not use this equipment if you are in poor health, taking medications, drugs, or have been consuming alcohol, all of which may impair your ability to work safely on this product.
- Comply with local or national legislation that applies for the use of this type of equipment.
- Examine thoroughly to ensure that the warning line is properly set up.
- Always check that the surface under the foot clamps and/or the warning line bases are free of debris. Good adhesion is necessary in order to avoid movements or slipping.
- Never use warning line for purposes that were not intended for.
- Warning line is not designed and should not be used as a fall protection anchor for workers.
- Inspect before use. Do not use this equipment if it is damaged or missing parts.
- Always inspect equipment before use to make sure it is working properly and that it is suitable for the needs.
- Always wear the mandatory protective equipment when installing a warning line.
- Report and protect access to the site if the installation of the warning line is not complete and safe.
- It is imperative to use only the manufacturer suggested parts to assemble the warning line.
- Never use warning line in poor safety conditions, such as extreme weather conditions.

EQUIPMENT INSPECTION

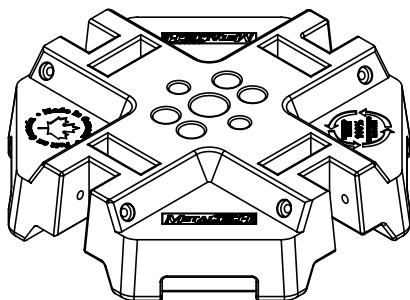
- The equipment you plan to use should be inspected to make sure it is in good condition and suitable for the job.
Check the following:
 - SILLS: installed in accordance with the assembly guide, respecting the maximum distances and the number of bases.
 - CLAMPS: must not contain cracks and the fastening screws must be tightened to the specified torque.
 - OTHER COMPONENTS: inspect any other component of the structure. Any damaged part should be labeled and marked as improper for use.

STANDARDS COMPLY*

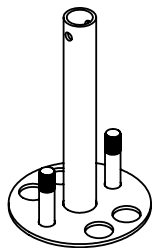
- The warning line must be capable of withstanding a load of 100 N applied horizontally at the line's highest point or vertically at its midpoint between 2 stanchions.
- The warning line must be made of a rigid strip, a cable or a chain able to withstand a tractive force of at least 2.22 kN.
- The configurations presented in this guide have been designed to withstand the loads for installation on an elastomeric membrane. Modifications to the configurations may be necessary depending on the type of roofing membrane used.

*RSST - S-2.1, r.4 - 2.9.4.1 - Warning Line

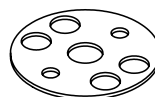
PARTS



M-MTB
RUBBER BASE



M-MTS02
BASE SUPPORT
(STACKABLE SYSTEM)



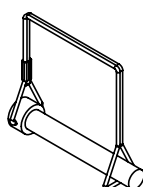
M-MTS03
BASE PLATE
(STACKABLE SYSTEM)



VB-NM20GV
20 mm NUT



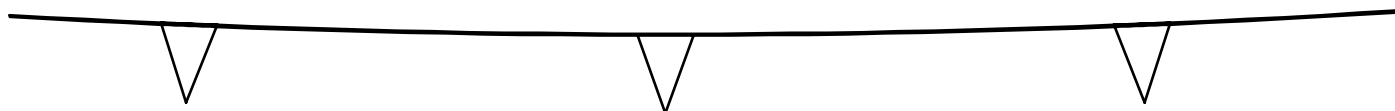
AL-A0050
END CAP



I-CAS5PIN
LOCKING-PIN



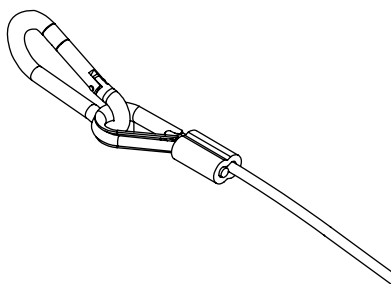
M-MTCWL
HOOK CLAMP



M-MTWLR
NYLON ROPE WITH PENNANTS



M-MTS01
GUARDRAIL POST
(STACKABLE SYSTEM)



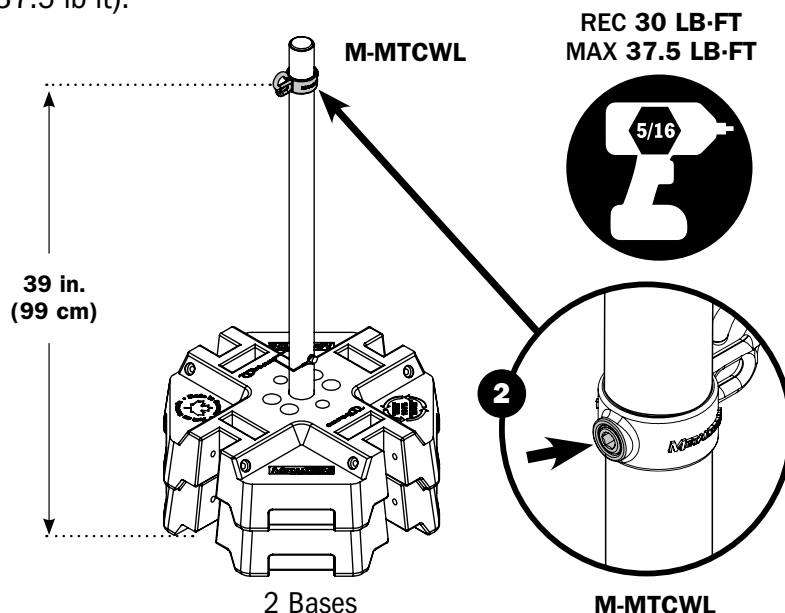
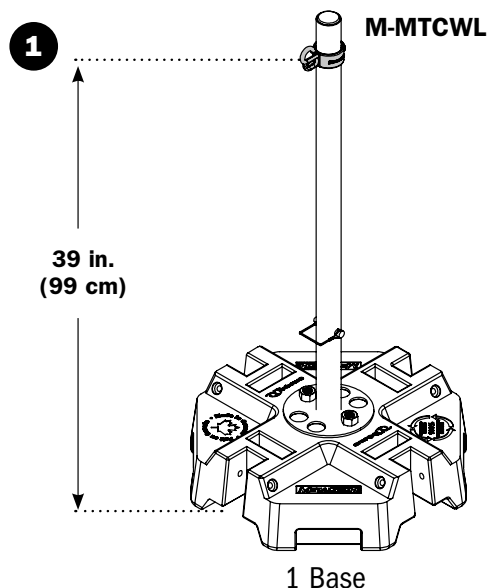
M-MTWLC8 (CANADA)
M-MTWLC20 (USA)
NYLON COATED STEEL WIRE
WITH CARABINERS



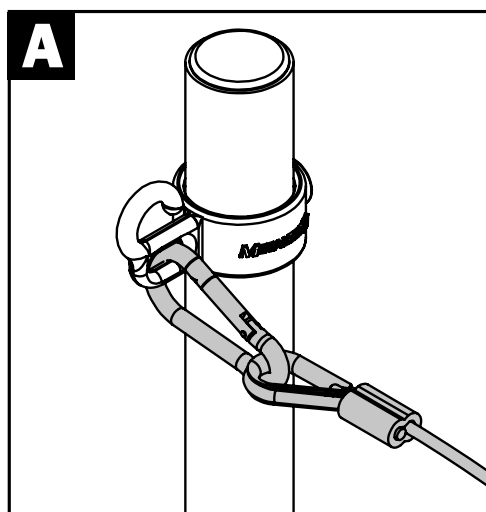
M-MTWLFPL
PLASTIC
PENNANT

ASSEMBLY - WARNING LINE

- 1 Add the fitting 39 in. (99 cm) from ground level to complete sets of one or two bases.
- 2 Tighten the fastening screw to 30 lb·ft (max 37.5 lb·ft).

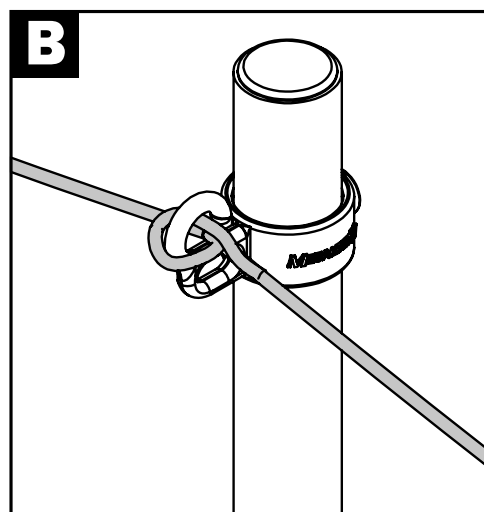


- 3 Two options are available to connect the vertical posts.



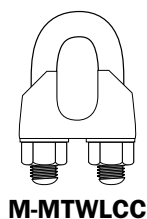
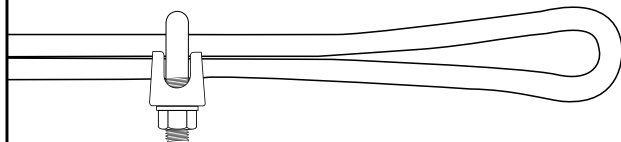
Warning line system
with carabiners and cables.

M-MTWLC8 (Canada)
M-MTWLC20 (United States)



Rope warning line system.

M-MTWLR



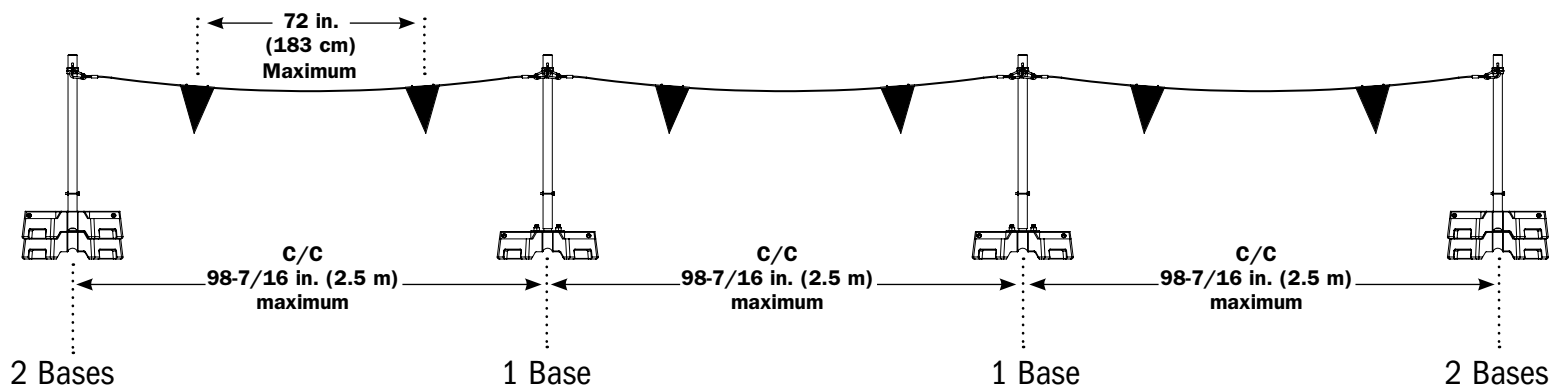
CABLE CLAMP

Possibility of using cable clamp, when
your cable is too long at the end of
an installation.

INSTALLATION IN QUEBEC ACCORDING TO RSST - S-2.1, R.4 - 2.9.4.1

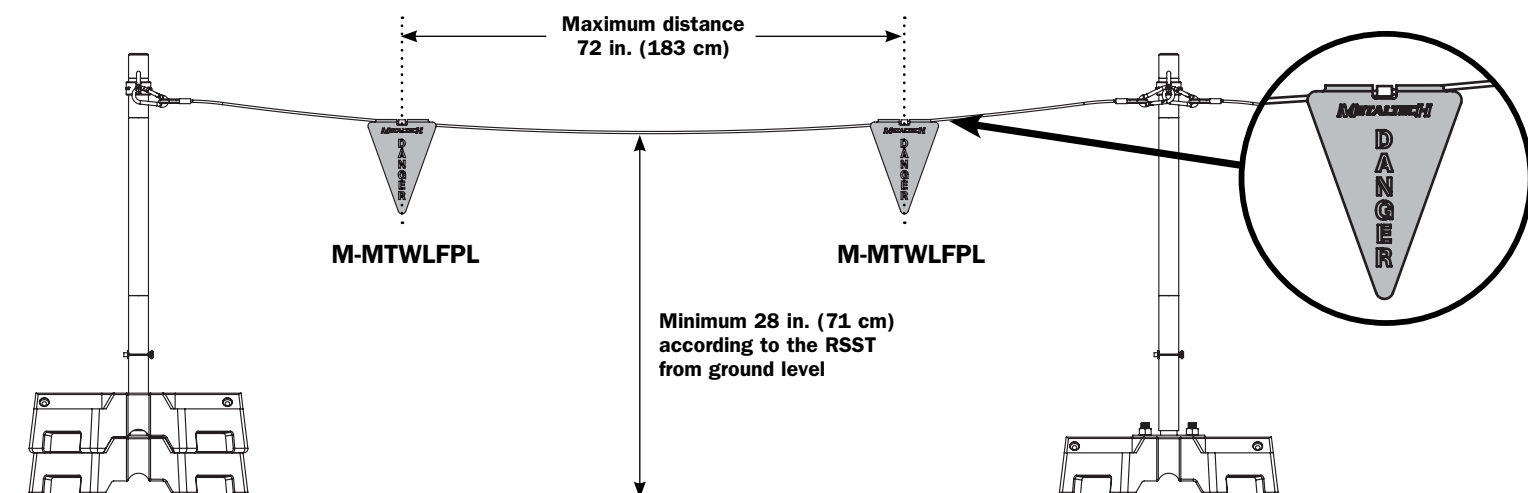
Install the base sets according to the desired configuration. Always install a set consisting of two bases at each end and corners (change of direction).

* **Note:** The warning line should be located 78-3/4 in. (2 m) from the edge of the roof. The maximum distance between posts is 98-7/16 in. (2.5 m) in Quebec. A minimum of 2 pennants per 98-7/16 in. (2.5 m) section is required to ensure that the pennants are separated by a maximum of 72 in. (183 cm).



For the carabiner and cable system, install two safety flags on the warning lines at a maximum distance of 72 in. (183 cm) C/C from each other.

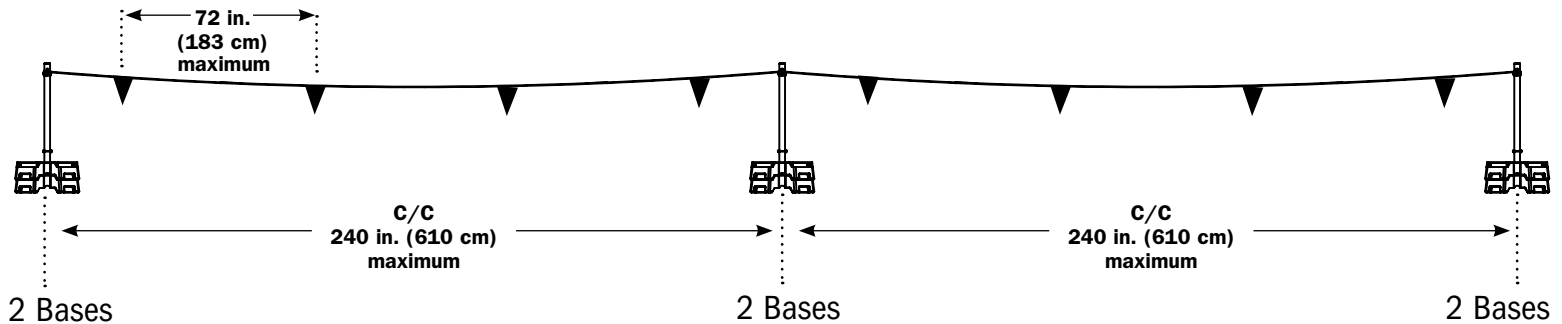
* **Note:** The lowest point of the extension line should never be less than 28 in. (71 cm) from ground level.



INSTALLATION IN CANADA AND THE UNITED STATES ACCORDING TO OSHA 29 C.F.R. & 1926.502 (F)

Install the base sets according to the desired configuration. Always install a set consisting of two bases.

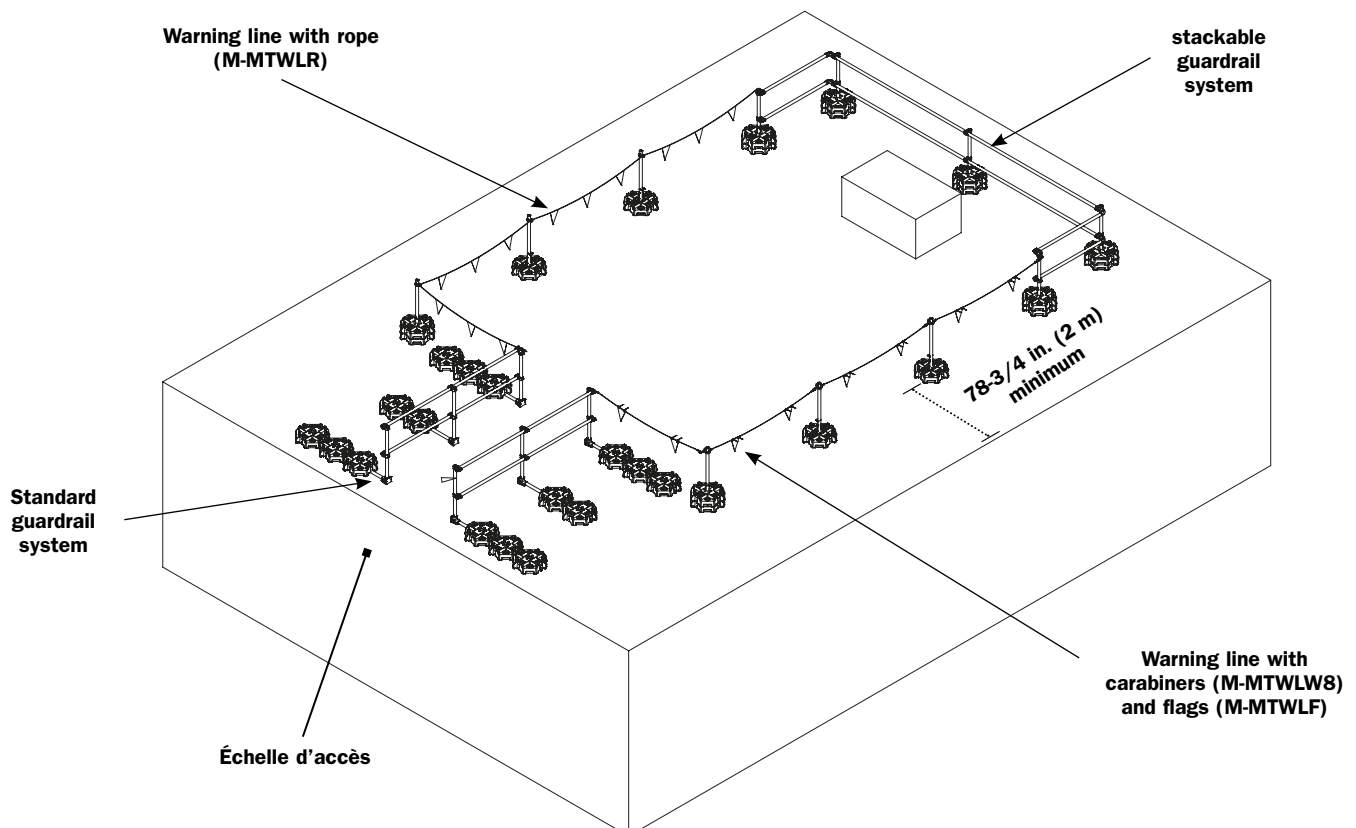
* **Note:** The warning line should be located 78-3/4 in. (2 m) from the edge of the roof. The maximum distance between the posts is 240 in. (610 cm) for this configuration. A minimum of 4 pennants per 240 in. (610 cm) section is required to ensure that the pennants are separated by a maximum of 72 in. (183 cm)



CONFIGURATION CONNECTION WITH EXISTING GUARDRAIL

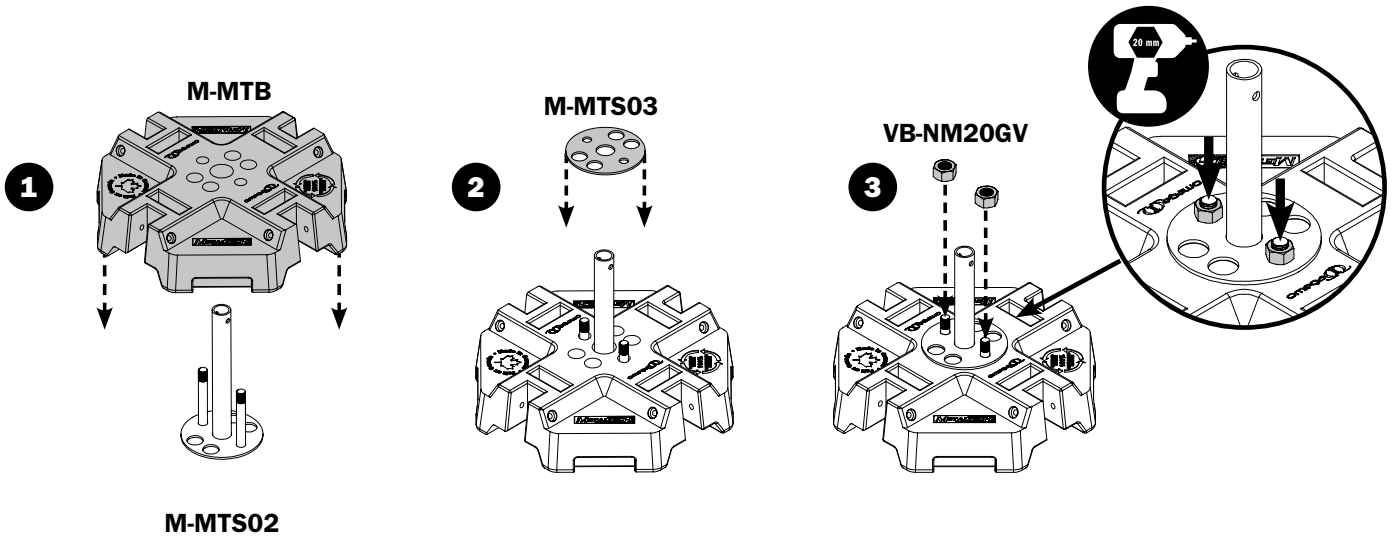
Warning lines are an excellent way to connect standard and/or stackable guardrails already on the roof.

* **Note:** A warning line must always be installed at a minimum distance of 78-3/4 in. (2 m) from the edge of the roof. Otherwise, a guardrail must be installed.

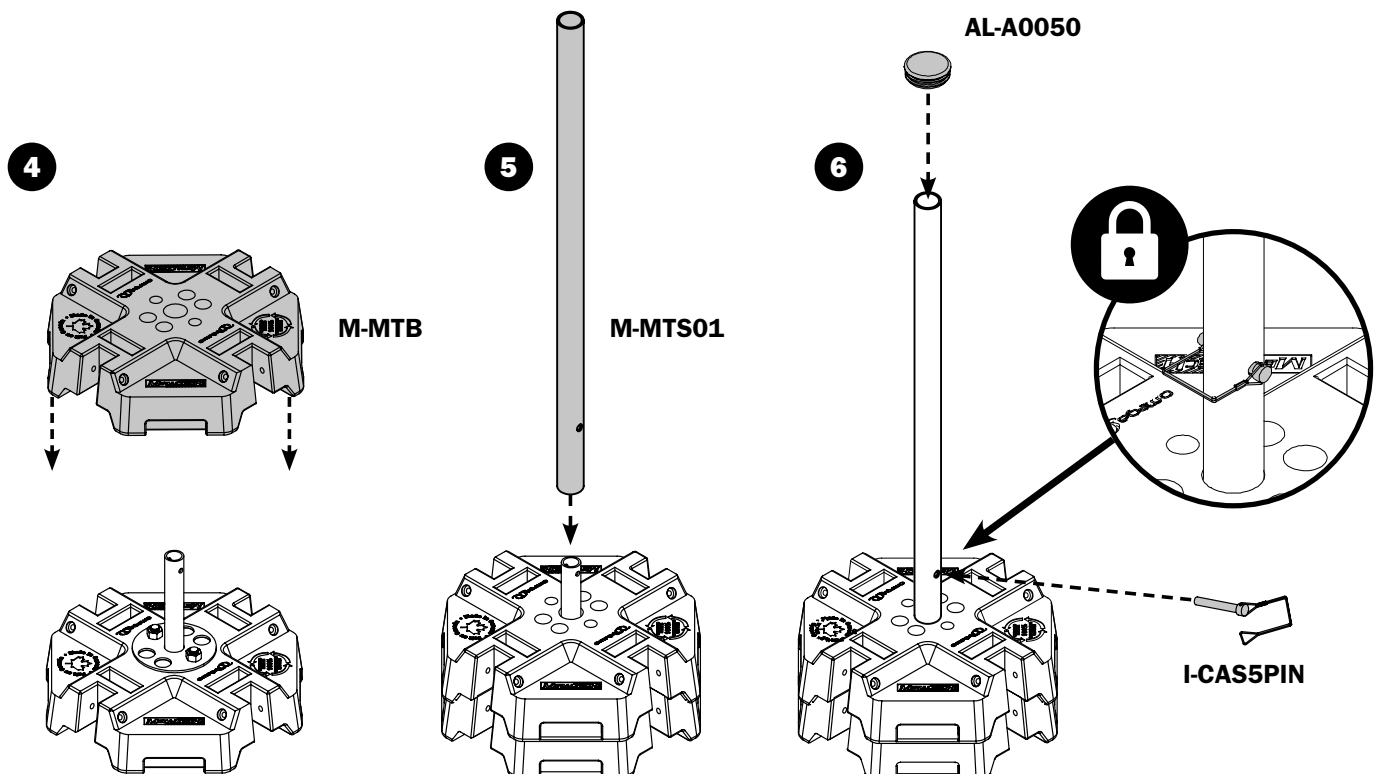


ASSEMBLY - STACKABLE CONFIGURATION

- 1 Place a rubber base on the base support.
- 2 Install a support plate on the base support over the rubber base.
- 3 Secure the assembly by tightening the two nuts with an impact drill.



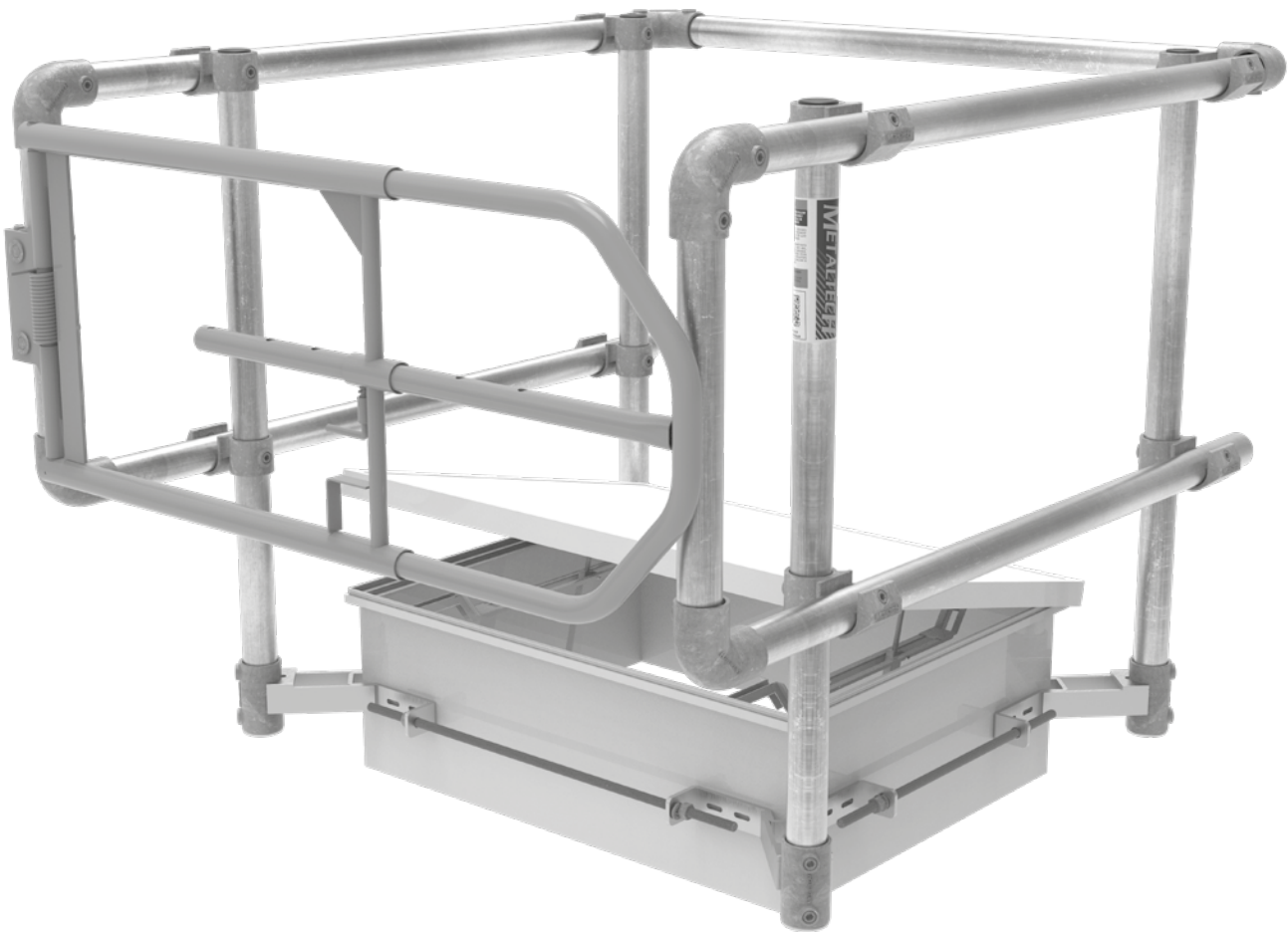
- 4 Add a second rubber base to the base support (ends and corners posts of the line).
- 5 Insert the vertical post onto the base bracket.
- 6 Lock the assembly with a locking rod.





INSTRUCTIONS

ACCESS HATCH



Picture may differ from actual product.



**READ THESE INSTRUCTIONS CAREFULLY BEFORE USING THIS PRODUCT.
KEEP THIS MANUAL HANDY FOR FUTURE REFERENCE.**

**THIS EQUIPMENT MEETS ANSI,
NBC, CNESST, CSTC, RSST,
OBC, OSHA AND WORKSAFE BC
STANDARDS.**

OPERATIONAL SAFETY



READ BEFORE BEGINNING ASSEMBLY.

**FAILURE TO UNDERSTAND AND FOLLOW ALL SAFETY RULES AND ASSEMBLY INSTRUCTIONS
COULD RESULT IN SERIOUS INJURY OR DEATH.**



METAL CONDUCTS ELECTRICITY:

Do not use this equipment where contact may be made with power lines or other live electrical circuits.

INSTRUCTIONS AND SAFETY

- Do not use this equipment if you are in poor health, taking medications, drugs, or have been consuming alcohol, all of which may impair your ability to work safely on this product.
- Comply with local or national legislation that applies for the use of this type of equipment.
- Examine thoroughly to ensure that the guardrails are properly set up.
- Always check that the surface under the foot clamps and/or the guardrail bases are free of debris. Good adhesion is necessary in order to avoid movements or slipping.
- Never use guardrails for purposes they were not intended for.
- Guardrails are not designed and should not be used as a fall protection anchor for workers.
- Inspect before use. Do not use this equipment if it is damaged or missing parts.
- Always inspect equipment before use to make sure it is working properly and that it is suitable for the needs.
- Always wear the mandatory protective equipment when installing guardrails.
- Report and protect access to the site if the installation of the guardrails is not complete and safe.
- It is imperative to use only the manufacturer suggested parts to assemble the guardrails.
- Never use guardrails in poor safety conditions, such as extreme weather conditions.

EQUIPMENT INSPECTION

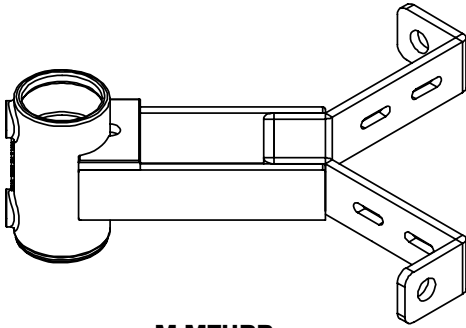
- The equipment you plan to use should be inspected to make sure it is in good condition and suitable for the job.
Check the following:
 - SILLS: installed in accordance with the assembly guide, respecting the maximum distances and the number of bases.
 - GUARDRAILS: straight, without bumps, deformations or folds and without excessive rust.
 - CLAMPS: must not contain cracks and the fastening screws must be tightened to the specified torque.
 - OTHER COMPONENTS: inspect any other component of the structure. Any damaged part should be labeled and marked as improper for use.

STANDARDS COMPLY*

- The guardrail must withstand a concentrated horizontal load of 1.0 kN to the outside or inside as well as at any point on the guardrail.
- The guardrail must withstand a vertical load of 1.5 kN/m applied to the top rail.

*NBC 2015 - National building code of Canada 2015 - 4.1.5.14

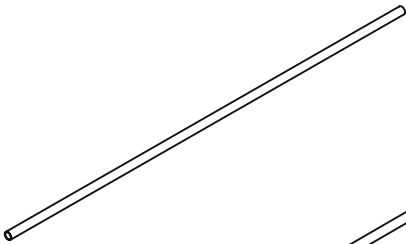
PARTS



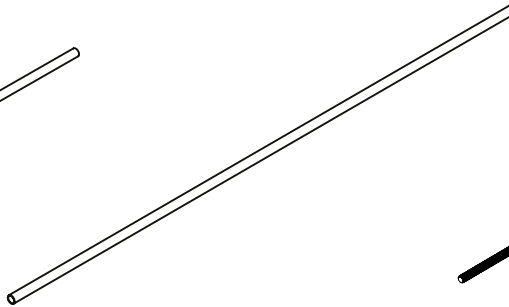
M-MTHBR
CORNER BRACKET



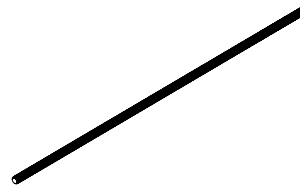
M-MTS04
GUARDRAIL POST



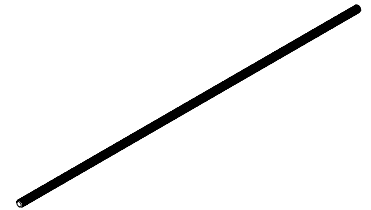
M-MTA120
120 in. GUARDRAIL



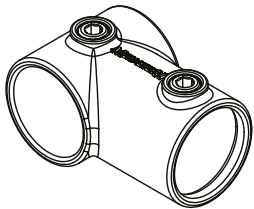
M-MTA240
240 in. GUARDRAIL



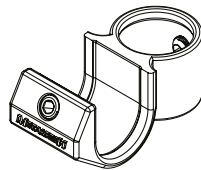
VB-TF1/2X26GV
1/2-13 X 26 IN.
THREADED ROD



VB-TF1/2X32GV
1/2-13 X 32 IN.
THREADED ROD



M-MTCT
T-CLAMP



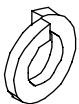
M-MTCH
HOOK CLAMP



M-MTCE
ELBOW



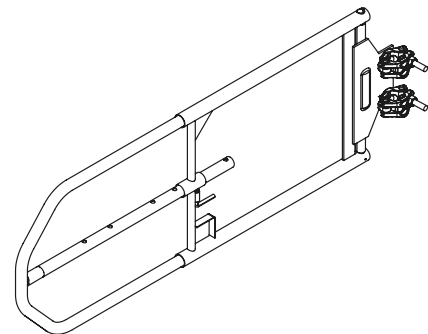
AL-A0050
END CAP



VB-WL1/2GV
1/2 IN. LOCK WASHER

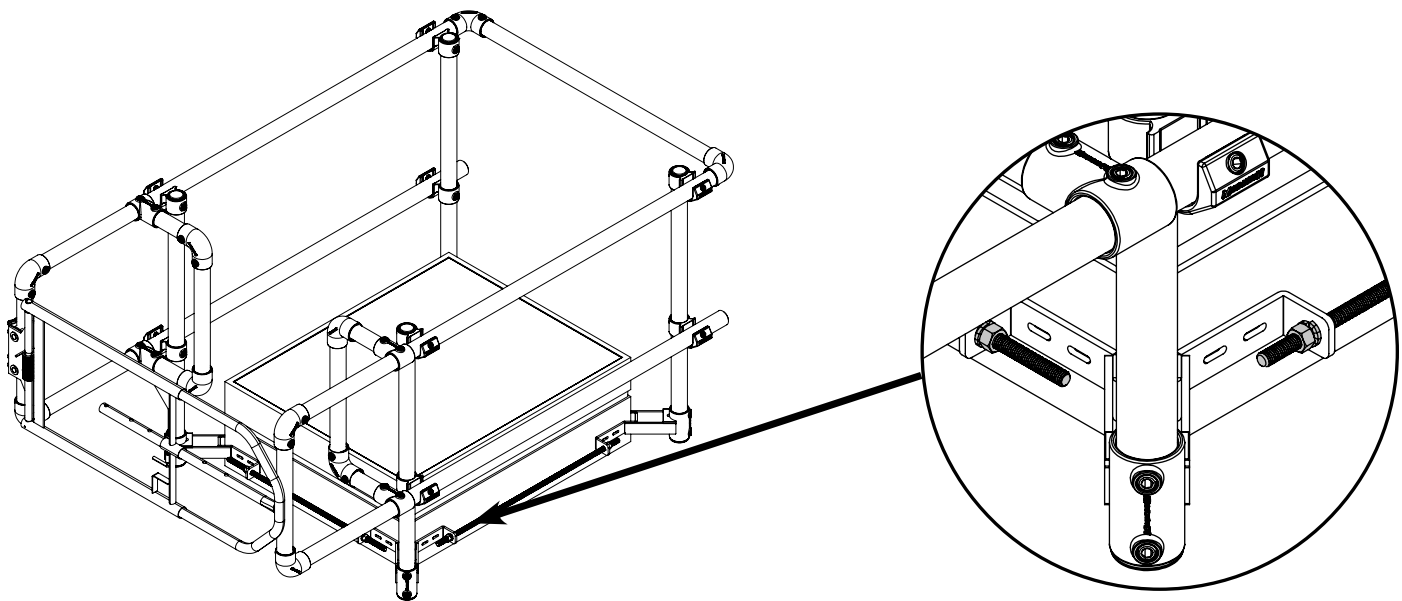


VB-NM20GV
20 mm NUT



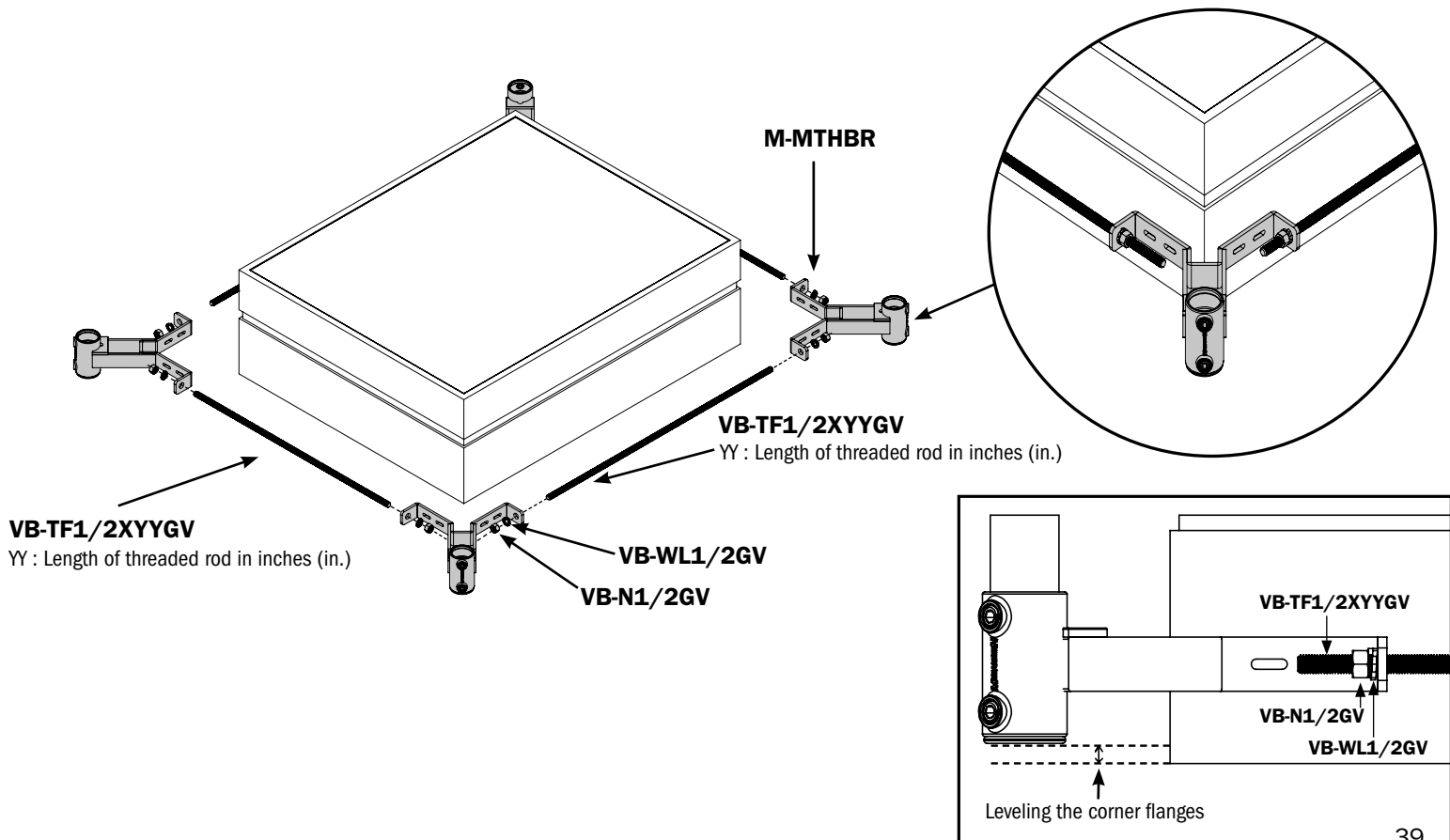
M-MCRG
SWING DOOR

OPTION A TIGHTENING GUARDRAIL

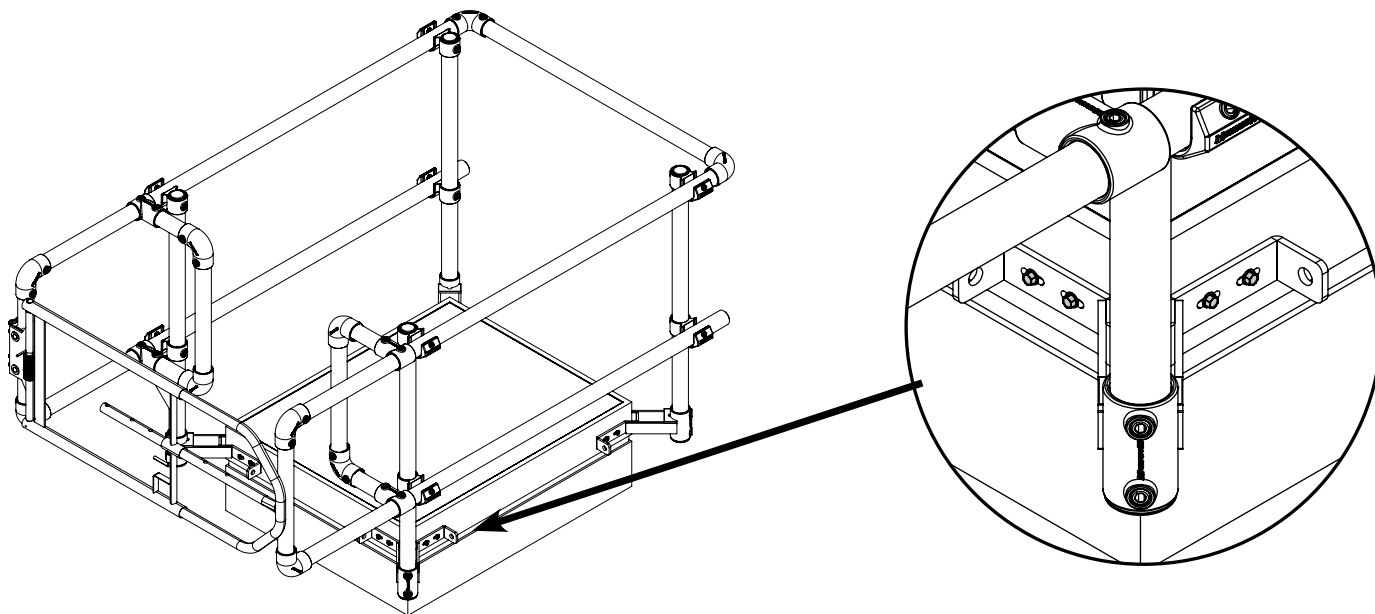


INSTALLATION OF THREADED RODS, CLAMP NUTS AND WASHERS

- 1** Install the clamps and threaded rods in position around the access hatch without tightening the nuts and washers beforehand. Threaded rods can be cut if they are too long during installation.
- 2** When preparation is complete, gradually tighten the nuts and threaded rods alternately on each side of the hatch, making sure the corners stay in place during installation. Make sure the clamps are at the same distance from the ground if your system is not touching the ground (leveling). If necessary, use rubber mats to protect the roof surface below the corner flanges.

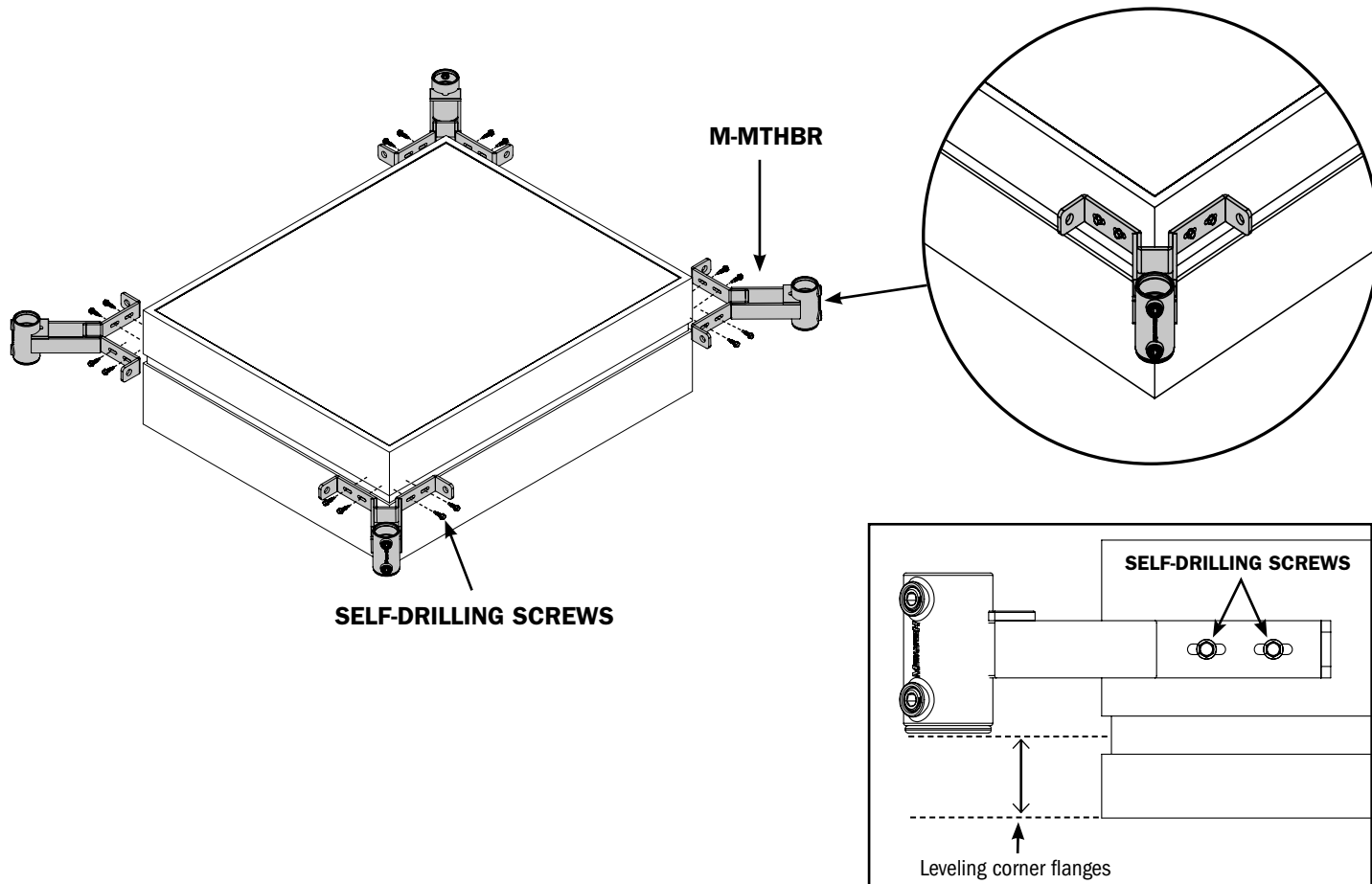


OPTION B ANCHOR GUARDRAIL



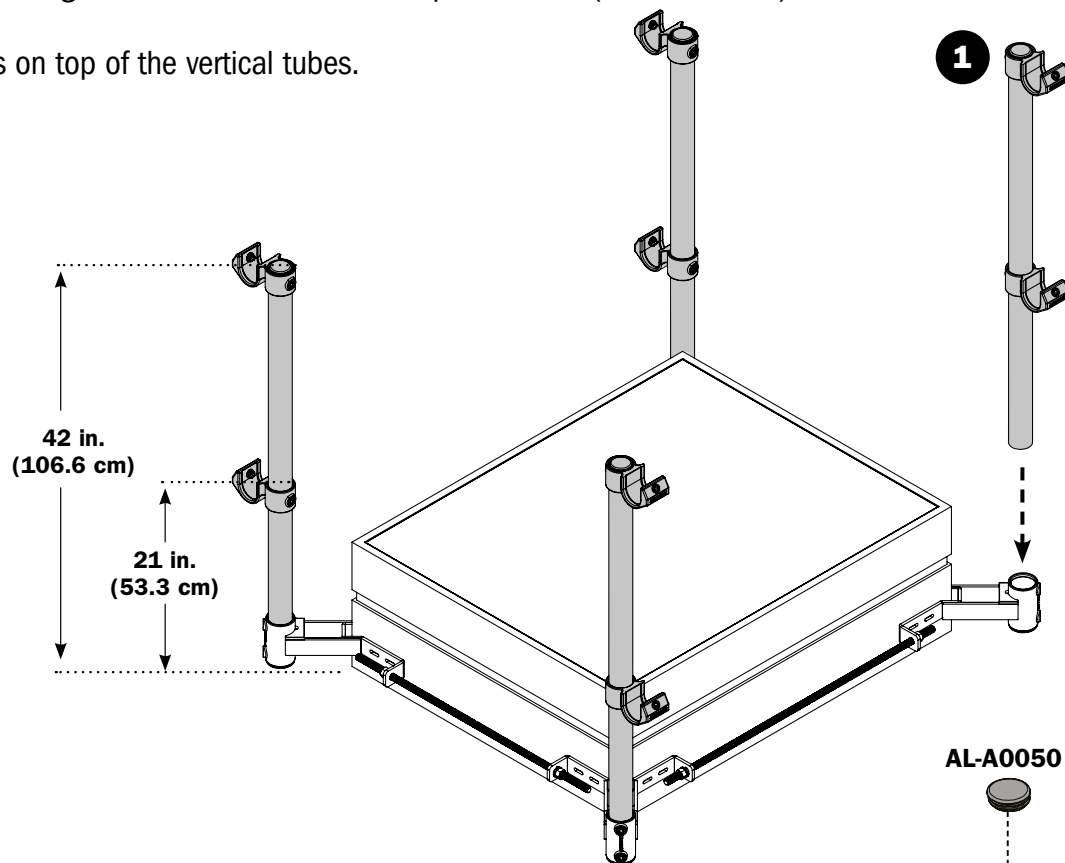
INSTALLATION WITH SELF-DRILLING SCREWS

- 1 Install the clamps in position around the access hatch. Use the self-drilling screws in the oblong holes for this purpose until the flanges are fixed. Make sure that the clamps are as low as possible from the access hatch and at the same distance from the ground.

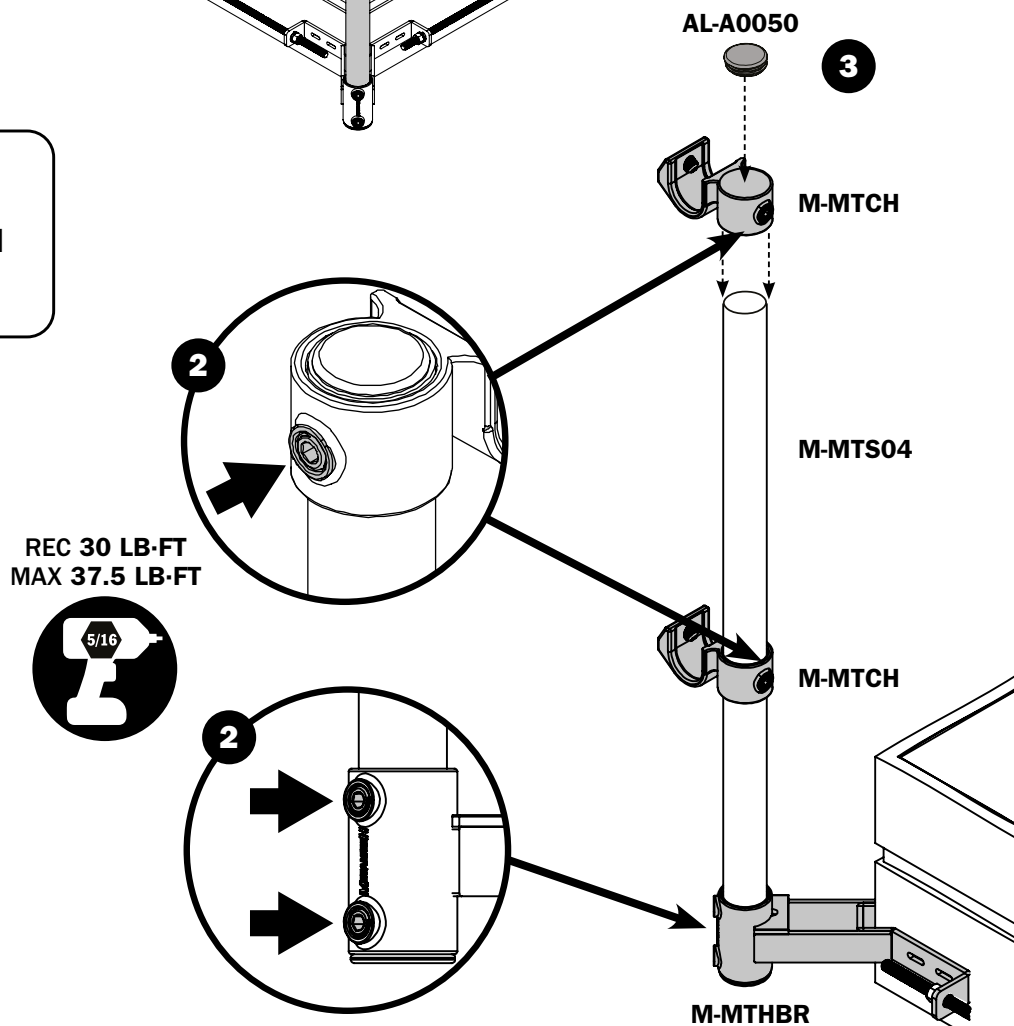


ASSEMBLY OF GUARDRAIL POSTS

- 1** Insert the 4 vertical tubes with the hooks.
- 2** Tighten the fastening screws on each corner clamp to 30 lb-ft (max 37.5 lb-ft).
- 3** Install the caps on top of the vertical tubes.

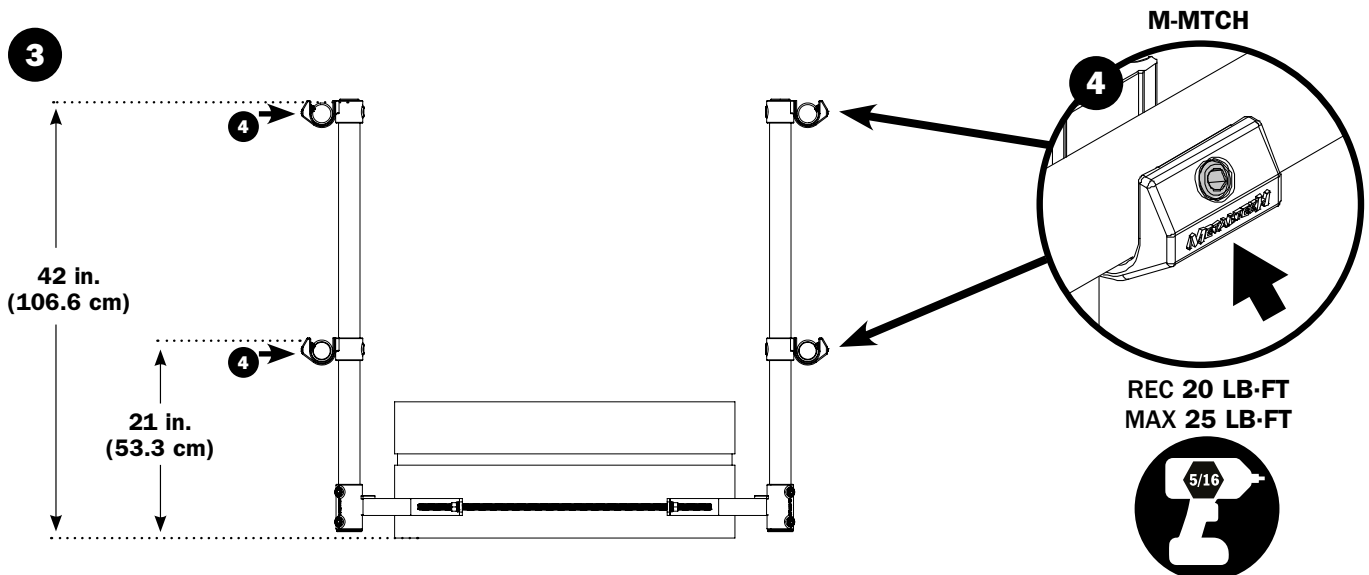
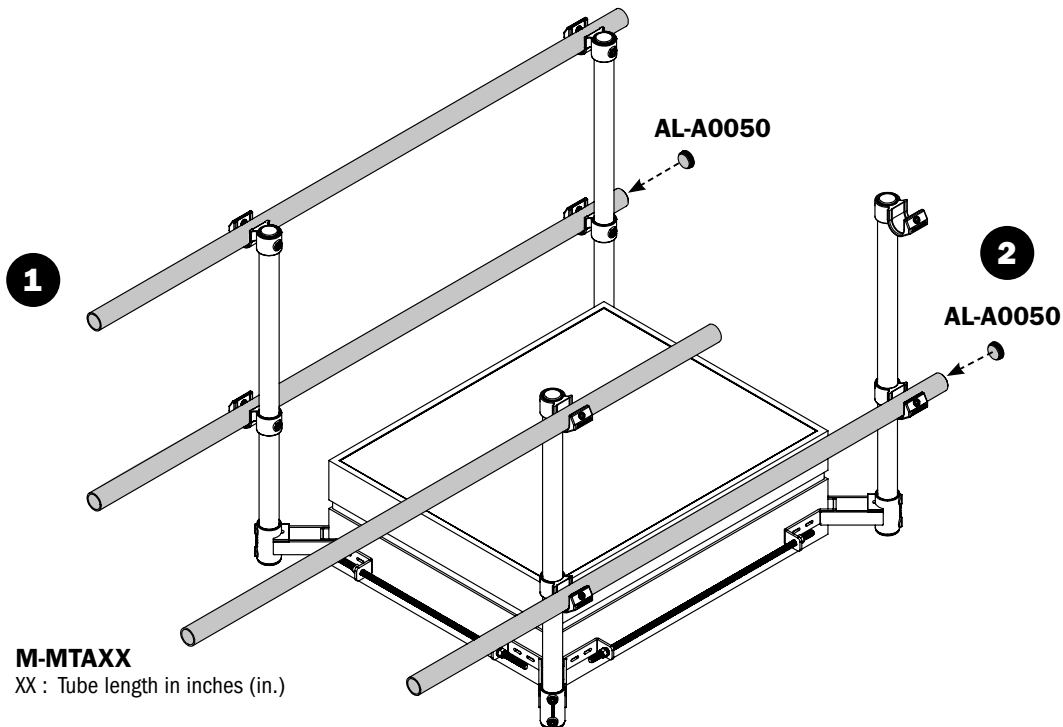


* **Note:** The top rail tube should stand at 42 in. (106.6 cm). The middle rail tube should be at 21 in. (53.3 cm).



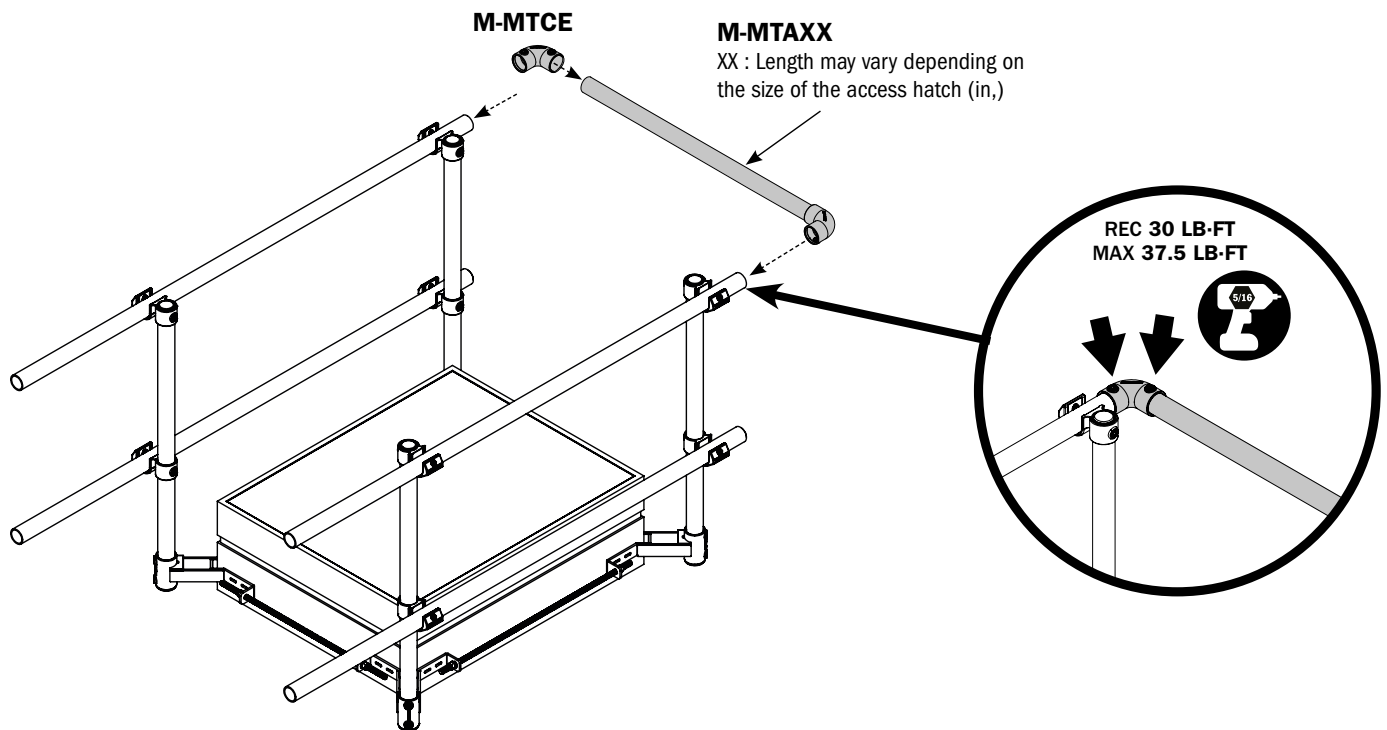
ASSEMBLY OF GUARDRAIL POSTS

- 1** Insert the 4 horizontal tubes of the guardrail on the hooks. The length of the horizontal tubes depends on the optional 2 foot clearance to allow the worker to exit the access hatch.
- 2** Insert the caps at the rear ends of the two intermediate tubes.
- 3** Make sure that the top rail is 42 in. (106.6 cm) from the ground and the middle rail is 21 in. (53.3 cm) from the ground.
- 4** Tighten the front screws to 20 lb-ft (max 25 lb-ft) on all hook clamps once the system is adjusted. It is suggested to use a spirit level during this installation.



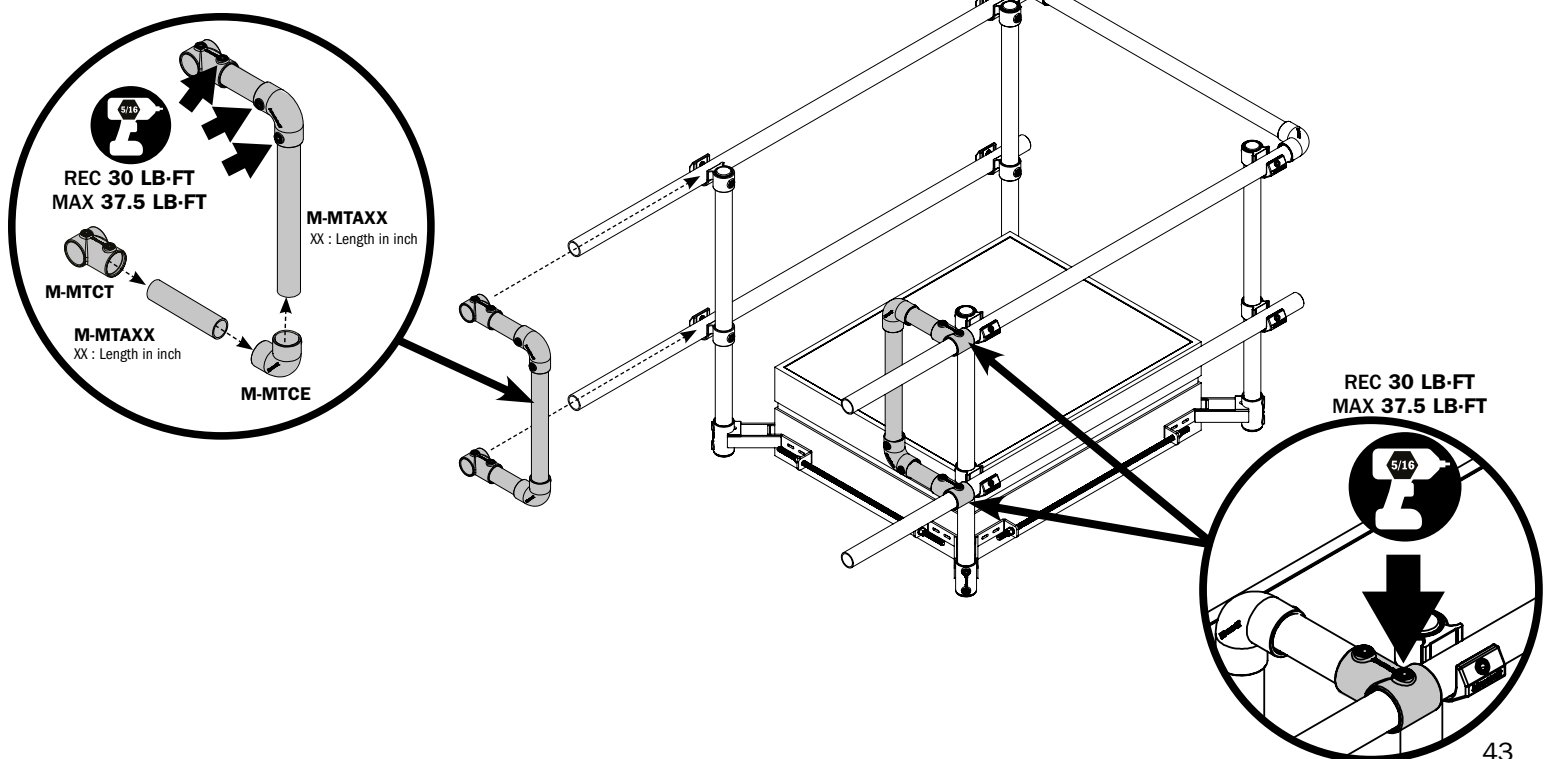
ASSEMBLY OF GUARDRAIL POSTS

Insert an elbow at the rear ends of the top rail. Insert a tube in these 2 elbows. The tube may vary in length depending on the size of the access hatch. If necessary, this can be cut during installation.



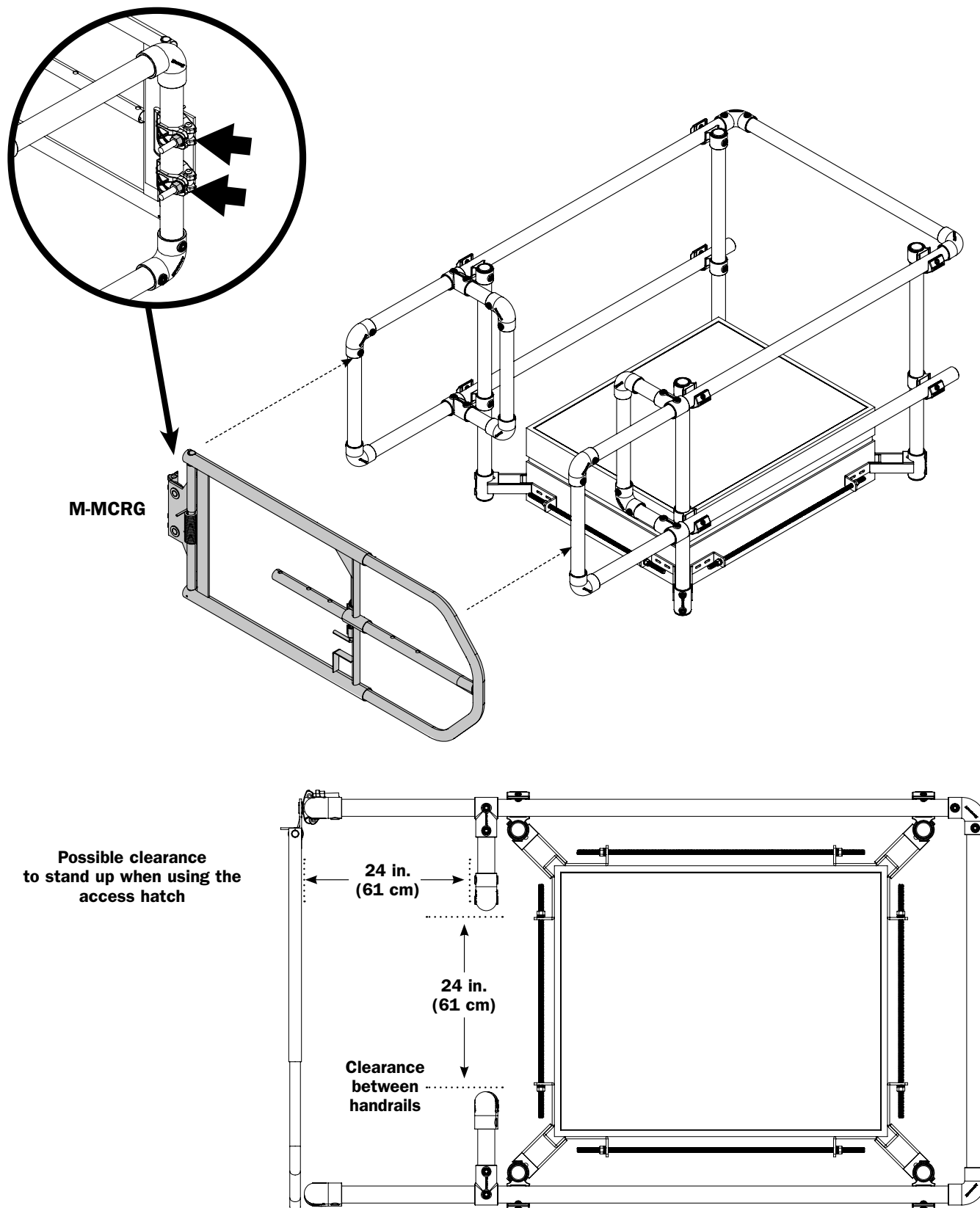
ASSEMBLY OF HANDRAILS

Handrails are also available to help exit the hatch. This handrail must be installed before the door and is made of aluminum tubes and T-clamps. Bring the handrails closer to the vertical posts as much as possible. Tighten the thumbscrews to 30 lb·ft (max 37.5 lb·ft).



RETRACTABLE DOOR ASSEMBLY

Assemble the retractable door on the guardrail. Tighten the door nuts.
The top rail of the door must be at the same level as the top rail of the guardrail.



Customer Service

1 800 363-7587

Our customer service staff is available to help you. For help with product assembly, to report damaged or missing parts, or for any other information about this product, please call our toll-free number.

KEEP THIS MANUAL FOR FUTURE REFERENCE

Keep this manual and the original sales invoice in a safe, dry place for future reference.

Ten Years Limited Warranty

Metaltech-Omega Inc. guarantees this product against any material defect. Please return this product, freight prepaid, to Metaltech-Omega Inc. At its own discretion, Metaltech-Omega Inc. will replace or repair this product and return it within a reasonable time. This warranty does not cover any damage(s) caused by any incorrect or inappropriate use, care or maintenance. Proof of purchase must accompany the return.

IN-SGS-NA-EN01



WWW.METALTECH.CO
1 800 363-7587
LAVAL, QUEBEC, CANADA H7L 3N6

Metaltech is a registered trademark of Metaltech-Omega inc.