

TELESCOPIC ALUMINUM MODULAR CONSTRUCTION STAIR SYSTEM

INDUSTRIAL
COMMERCIAL
RESIDENTIAL

METALTECH SMARTSTAIRS

SAFE

Solid, non-slip, stable and equipped with robust railings.

VERSATILE

Telescopic and modular, Smartstairs™ adapt easily to all types of sites for both indoor and outdoor use.

ECONOMIC

Revolutionary system to avoid recurring expenses of single-use stairs and their limited lifespan.

SUSTAINABLE

The aluminum structure is thick, light, easy to maintain and does not rust.

FAST

Easy and quick installation, in less than 30 minutes. No tools are required.



REGULATIONS/STANDARDS

✓ OSHA ✓ COHSR*

* Also respect more specific provincial OHS acts and regulations for temporary stairs on construction sites.

**BUILT TOUGH FOR
SAFETY**

A VERSATILE SOLUTION THAT ENSURES SAFE ACCESS FOR ALL TYPES OF PROJECTS

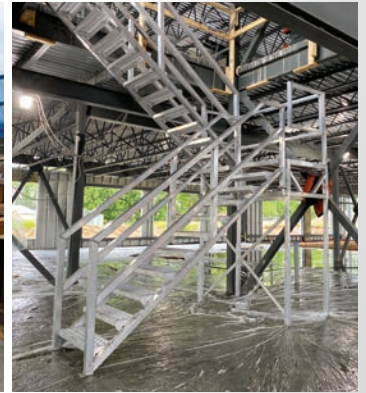
Smartstairs™ is a revolutionary aluminum temporary construction stair system. Telescopic, modular and reusable, it can be adjusted to different floor heights. This safe, ready-to-assemble system is designed for quick and easy assembly and disassembly without the risk of damaging surrounding structures.

Smartstairs™ is ideal for use in industrial, commercial, and residential construction sites. The stairs can also be used for accessing jobsite trailers, containers and exterior application with sloped terrain. Smartstairs™ facilitates the workflow of all jobsite trades.



FEATURES

- 1 ALUMINUM
- 2 TELESCOPIC
- 3 REUSABLE
- 4 MODULAR
- 5 NON-SLIP STAIRS



Smartstairs™ staircases can be configured to your needs, the possibilities are endless!



3 TO 5 STEPS

MINIMUM HEIGHT	22.5"
MAXIMUM HEIGHT	37.5"

MODEL: AL-SSEH5



6 TO 10 STEPS

MINIMUM HEIGHT	45"
MAXIMUM HEIGHT	75"

MODEL: AL-SSEH10



11 TO 16 STEPS

MINIMUM HEIGHT	82.5"
MAXIMUM HEIGHT	120"

MODEL: AL-SSEH16



17 TO 21 STEPS

MINIMUM HEIGHT	127.5"
MAXIMUM HEIGHT	157.5"

MODEL: AL-SSEH21

Several components are available to design a modular staircase. The Smartstairs™ staircase will surprise you with its efficiency, safety, and reliability.



WWW.METALTECH.CO

1 800 363-7587