



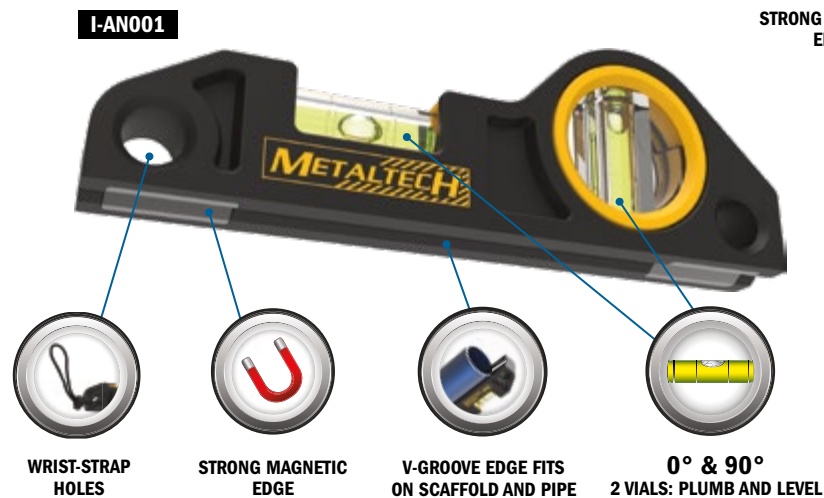
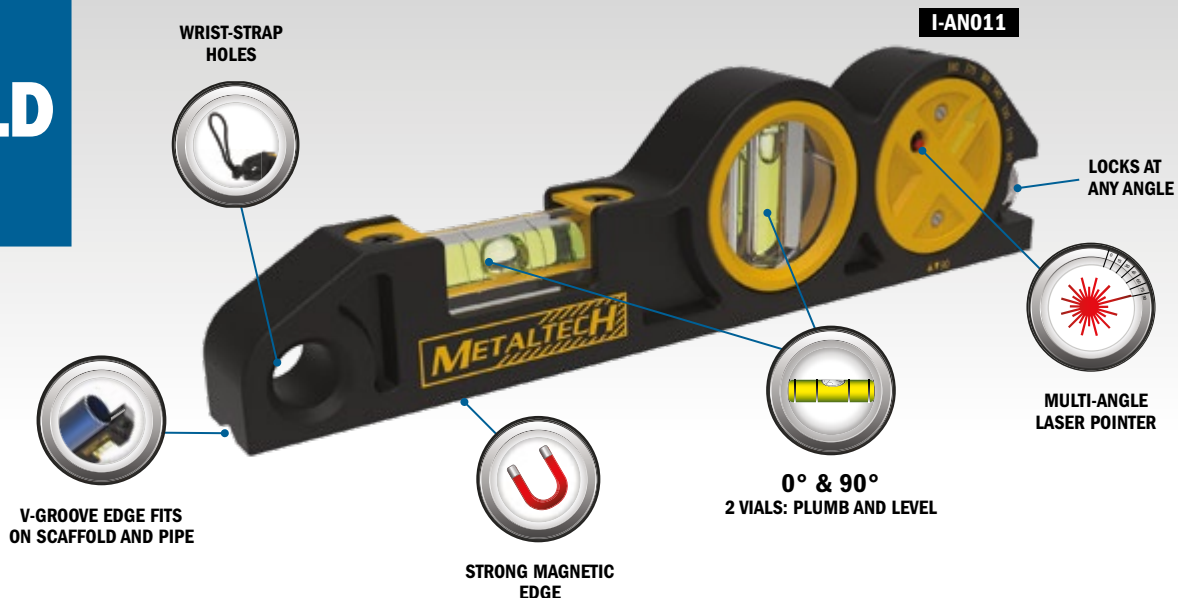
SCAFFOLD LEVEL

- Compact level that fits in your pocket
- Heavy-duty aluminum construction
- Magnetic V-groove edge fits on scaffolding or pipes

METALTECH®

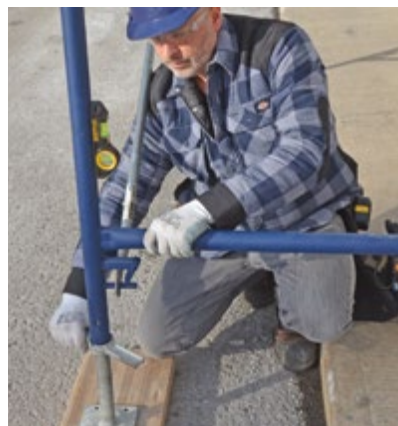


SCAFFOLD LEVEL



TECHNICAL FEATURES

PRODUCT MODEL	I-AN001	I-AN011
DIMENSIONS (W X D X H)	6.25 X 0.75 X 2 IN.	7.9 X 0.75 X 2 IN.
PACKAGING DIMENSIONS (W X D X H)	3 X 8 X 2 IN.	3.5 X 9.5 X 2 IN.
WEIGHT	0.5 LB (0.23 KG)	0.6 LB (0.27 KG)
MATERIAL	ALUMINIUM DIE-CAST	ALUMINIUM DIE-CAST
UPC	778300003204	778300003228



COMPARISON CHART



MODEL	I-AN001	I-AN011
2 vials: plumb and level	✓	✓
Strong magnetic edge	✓	✓
V-Groove edge that fits on scaffold and pipe	✓	✓
Wrist-strap holes	✓	✓
Multi-angle laser pointer		✓
Batteries included		✓

METALTECH®

WWW.METALTECH.CO

1 800 363-7587

Metaltech is a registered trademark of Metaltech-Omega inc. | www.metaltech-omega.com | NOTE: Pictures and descriptions in this brochure may differ from actual product. S-LEVEL-NA-EN02