



SCAFFOLD BENCH SYSTEM WORKBENCH

- Reversible platform; deck on one side, miter saw stand on the other
- Storage shelf
- Use it as a work table on wheels
- 5" double locking heavy duty casters
- No tools assembly
- Can roll through doorways

METALTECH

21
IN



**BUILT TOUGH FOR
SAFETY**

2 IN 1

SCAFFOLD BENCH SYSTEM WORKBENCH

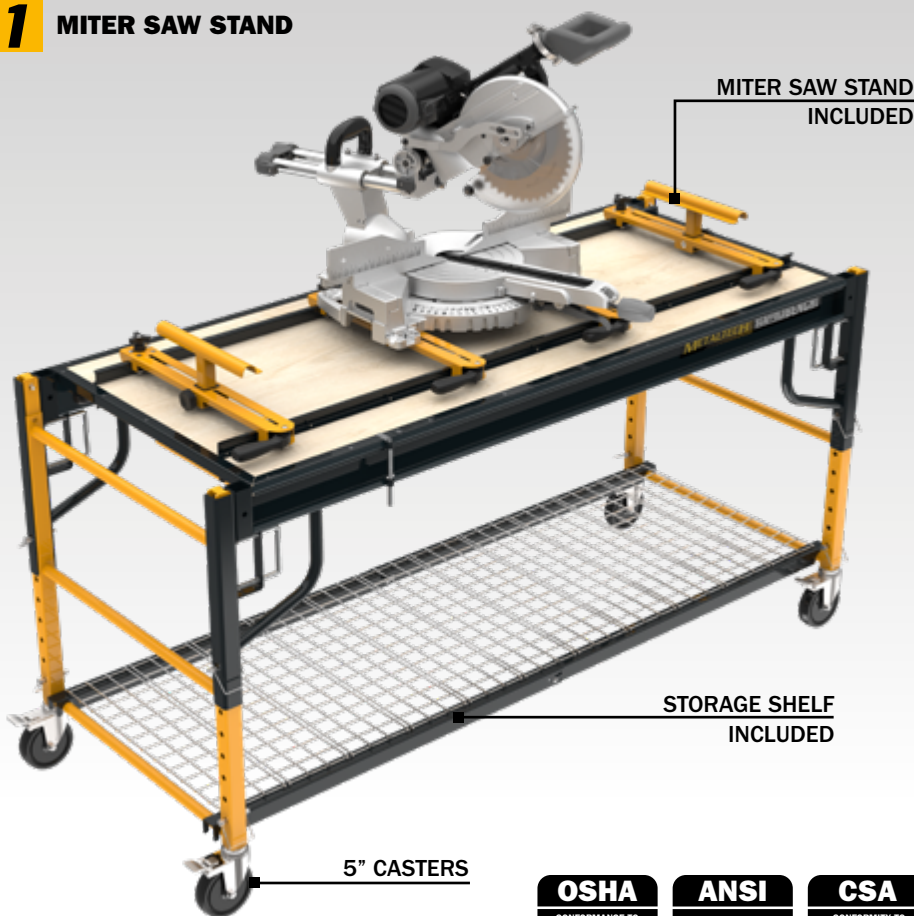


REVERSIBLE PLATFORM; DECK ON ONE SIDE, UNIVERSAL MITER SAW STAND ON THE OTHER

2 WORKBENCH



1 MITER SAW STAND



MITER SAW STAND INCLUDED

STORAGE SHELF INCLUDED

5" CASTERS



OPTIONS Made to work great with your workbench

MULTI-UNIT CONNECTOR



I-SBC

Connect many workbenches together and create a larger worktable area, on wheels!

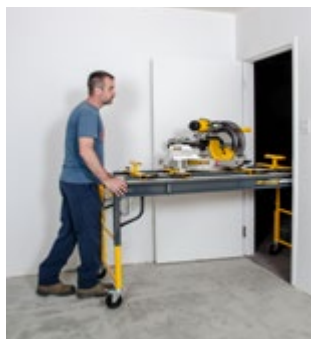
SUPPORT ROLLER



11-1/2" Wide ball-bearing roller

I-CISRL

	WORKBENCH
ASSEMBLED DIMENSIONS (WXDXH)	74.75 x 29.75 x 39.25 in. (189.9 x 75.6 x 99.7 cm)
PACKAGE DIMENSIONS (WXDXH)	75.75 x 30 x 6.75 in. (192.4 x 76.2 x 17.2 cm)
WEIGHT	150 lb (68.2 kg)
LOAD CAPACITY	Scaffolding: 1,100 lb (500 kg). Combined weight of user + materials Storage rack: 200 lb (90.7 kg) distributed weight
WORKING HEIGHTS	Miter saw stand: From 27.25 to 39.25 in. (69.2 to 99.5 cm). Work bench: From 25.5 to 37.5 in. (64.8 to 95.3 cm). 2 in. (5 cm) increment adjustable heights
REACH	9.9 ft (3.01 m)
CASTERS	5 in. (13 cm) Double locking heavy duty
STANDARDS	OSHA (29 cfr pt. 1926), ANSI (A10.8), CSA (S269.2)
INCLUDED IN THE BOX	2 ladders, 2 braces, 1 platform with miter saw stand, 1 storage rack, 4 casters, 10 locking pins, 2 anti-tip assemblies and assembly instructions.
MODEL	I-CISCWB
UPC	778300003128



METALTECH

WWW.METALTECH.CO

1 800 363-7587