



JOBSITE SERIES TELESCOPING WORK PLANK

- Plank easily adjusts to match the needs of your project
- Lightweight yet strong aluminum construction
- Easy setup and handling
- Anti-slip surface offers safe footing
- Long-lasting anodized aluminum finish

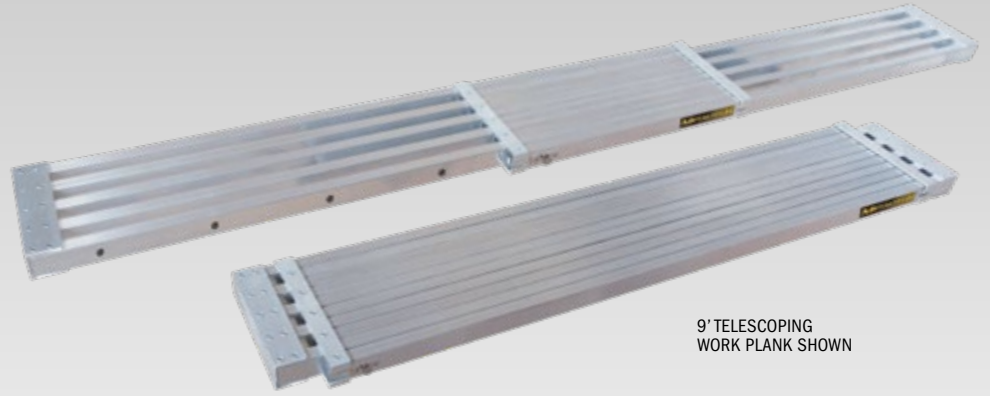
METALTECH®

Work Plank shown with Telescoping Multi-Position Ladder (model E-MTL7100AL)

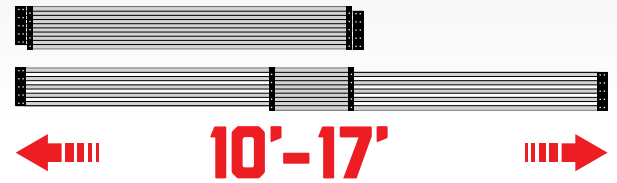
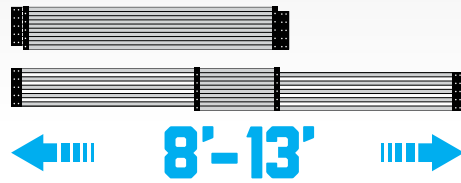
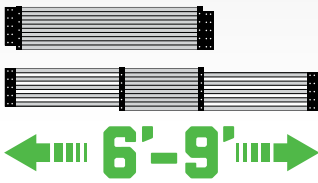


**BUILT TOUGH FOR
SAFETY**

TELESCOPING WORK PLANK



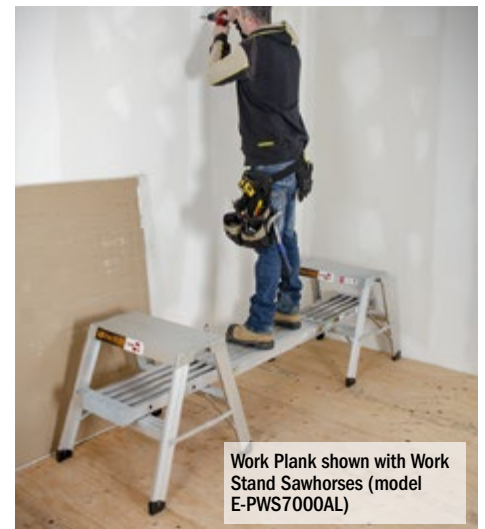
9' TELESCOPING
WORK PLANK SHOWN



	9' TELESCOPING WORK PLANK	13' TELESCOPING WORK PLANK	17' TELESCOPING WORK PLANK
CLOSED DIMENSIONS (WXDXH)	72 X 12 X 2 IN. (183.2 X 30.2 X 5 CM)	96 X 12 X 2 IN. (244.2 X 30.2 X 5 CM)	120 X 12 X 2 IN. (305.2 X 30.2 X 5 CM)
OPEN DIMENSIONS (WXDXH)	107.75 X 12 X 2 IN. (273.8 X 30.2 X 5 CM)	156 X 12 X 2 IN. (396 X 30.2 X 5 CM)	204 X 12 X 2 IN. (518 X 30.2 X 5 CM)
EXTEND	6 UP TO 9 FT (1.8 UP TO 2.7 M)	8 UP TO 13 FT (2.4 UP TO 4 M)	10 UP TO 17 FT (3 UP TO 5.2 M)
LOAD CAPACITY	250 LB (113 KG)	250 LB (113 KG)	250 LB (113 KG)
WEIGHT	31.1 LB (14.1 KG)	41 LB (18.6 KG)	50.7 LB (23 KG)
MATERIAL	ALUMINUM	ALUMINUM	ALUMINUM
STANDARDS	ANSI, CSA AND OSHA	ANSI, CSA AND OSHA	ANSI, CSA AND OSHA
MODEL	M-PEP7000AL	M-PEP7100AL	M-PEP7200AL
UPC	778300000241	778300000258	778300000265



Work Plank shown with
Telescoping Multi-Position
Ladder (model E-MTL7100AL)
and Ladder Jacks
(model E-LJ20P)



Work Plank shown with Work
Stand Sawhorses (model
E-PWS7000AL)

METALTECH

WWW.METALTECH.CO

1 800 363-7587