

SCAFFOLDING DECKS

- 5/8 in. thick plywood
- Bolt-on assembly for easy replacement
- Platform fits on most scaffolding brands
- Anti pop-up sliding lock system at each end for added safety and security
- Meets ANSI, CSA, OSHA

METALTECH®

**BUILT TOUGH FOR
SAFETY**

THE BEST SCAFFOLD DECKS IN THE INDUSTRY

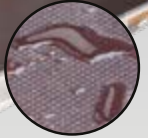


ALUMINUM PLATFORM WITH 5/8" PLYWOOD DECK

MODEL	DIMENSIONS	WEIGHT	LOAD CAPACITY
M-MPP719	7 FT X 19 IN.	33.2 LB	75 LB/FT ²
M-MPP724	7 FT X 24 IN.	45 LB	
M-MPP819	8 FT X 19 IN.	41.5 LB	
M-MPP1019	10 FT X 19 IN.	46 LB	
M-MPP1024	10 FT X 24 IN.	62 LB	50 LB/FT ²
M-MPP728	7 FT X 28 IN.	40 LB	25 LB/FT ²



WITH EDGE CAPPING



ANTI-SLIP WATERPROOF

ALUMINUM PLATFORM WITH 5/8" ANTI-SLIP PLYWOOD DECK WITH EDGE CAPPING

MODEL	DIMENSIONS	WEIGHT	LOAD CAPACITY
M-MPP719AS	7 FT X 19 IN.	36 LB	75 LB/FT ²
M-MPP1019AS	10 FT X 19 IN.	53 LB	



ANTI-SLIP WATERPROOF

ALUMINUM PLATFORM WITH 5/8" ANTI-SLIP PLYWOOD DECK

MODEL	DIMENSIONS	WEIGHT	LOAD CAPACITY
M-MPP724AS	7 FT X 24 IN.	38 LB	75 LB/FT ²
M-MPP1024AS	10 FT X 24 IN.	62 LB	50 LB/FT ²

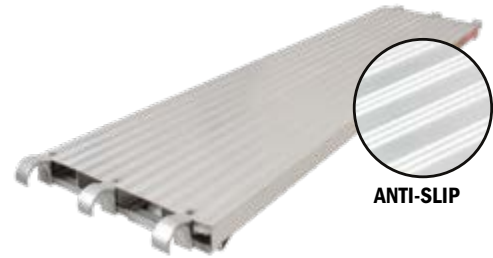


WITH EDGE CAPPING



ALUMINUM PLATFORM WITH 5/8" PLYWOOD DECK WITH EDGE CAPPING

MODEL	DIMENSIONS	WEIGHT	LOAD CAPACITY
M-MPP719RE	7 FT X 19 IN.	34.2 LB	75 LB/FT ²
M-MPP819RE	8 FT X 19 IN.	47 LB	



ANTI-SLIP

ALL ALUMINUM PLATFORM

MODEL	DIMENSIONS	WEIGHT	LOAD CAPACITY
M-MPA719	7 FT X 19 IN.	27.5 LB	75 LB/FT ²
M-MPA819	8 FT X 19 IN.	35 LB	
M-MPA1019	10 FT X 19 IN.	42.46 LB	

FEATURES

✓ CROSSBEAM



- EVENLY SUPPORTS THE 5/8" THICK PLYWOOD AND PREVENTS IT FROM FLEXING
- GALVANIZED STEEL
- ERGONOMIC HANDLE CUT OUT FOR COMFORT AND EASY HANDLING

STANDARD ON PLYWOOD PLATFORMS MODELS OF 19 IN. WIDE.

✓ SIDE RAILS



- PROTECT THE PLYWOOD EDGES TO PREVENT WATER INFILTRATION, DELAMINATION AND PREMATURE WEAR

✓ EDGE CAPPING



- PREVENTS EXTREMITY WEAR
- RE-REINFORCES PLYWOOD DECK EXTREMITIES
- INCREASES THE PLYWOOD LIFESPAN
- CUSTOMIZES YOUR EDGE CAPPING WITH YOUR COMPANY NAME. (MINIMUM ORDER QUANTITY APPLIES)

ONLY AVAILABLE ON PLYWOOD PLATFORMS MODELS OF 19 IN. WIDE



WWW.METALTECH.CO

1 800 363-7587