



# WALL BRACKET

- Meets OSHA 1926.450, ANSI A10.8, CWB and CSA S269.2
- Maximum load capacity: 1,000 lbs (454 kg)
- Easy to disassemble in 4 pieces to facilitate its transport
- Finish powder-coated blue or galvanized
- Adjustable bracket elbow width: 8" or 10"
- Adjustable deck width: 36.75" or 45.75"
- Packed in bundle of 20

**METALTECH**



**BUILT TOUGH FOR  
SAFETY**

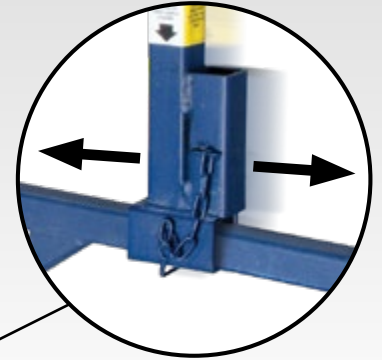
# WALL BRACKET

# SAFETY FIRST

The wall bracket is easy to install and very sturdy. Ideal for installation of platforms and work on eaves. For greater security when working on a roof, the wall bracket acts as a guardrail resulting in fewer work related accidents and fewer insurance claims. Available in galvanized finish or powder-coated blue.

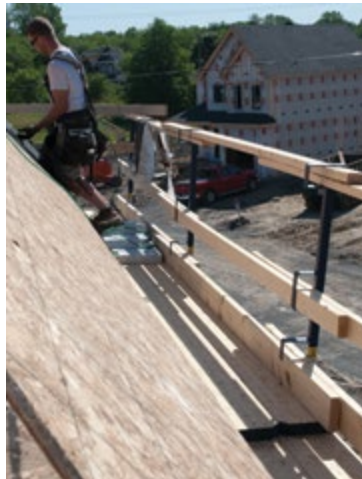


Adjustable  
8" or 10"



Adjustable  
36.75" or 45.75"

	WALL BRACKET	GALVANIZED WALL BRACKET
<b>DIMENSIONS</b>	50.25 X 79 X 27.5 IN.	50.25 X 79 X 27.5 IN.
<b>ADJUSTABLE</b>	36.75 OR 45.75 IN.	36.75 OR 45.75 IN.
<b>LOAD CAPACITY</b>	1,000 LB (454 KG)	1,000 LB (454 KG)
<b>STANDARDS</b>	OSHA, ANSI, CWB AND CSA	OSHA, ANSI, CWB AND CSA
<b>FINISH</b>	POWDER-COATED BLUE	GALVANIZED
<b>WEIGHT</b>	67 LB (30,4 KG)	71 LB (32.2 KG)
<b>MODEL</b>	M-MWB42	M-MWB42GV
<b>UPS</b>	778300940516	778300940523



# METALTECH

[WWW.METALTECH.CO](http://WWW.METALTECH.CO)

1 800 363-7587